

20

NEW PRODUCTS
CERAMIC & PORCELAIN
CEVISAMA 2020

aparici

INDEX | ÍNDICE

ALTEA 2CM	046
BOHEMIAN WALL	038
CORTEN	002
CORTEN 2CM	008
COTTO	036
DSTONE	010
DSTONE 2CM	016
DSTONE WALL	018
IRIDIUM	024
VIVID	026
VIVID WALL	032
WICKER	042

SINCE 1961

CORTEN



CORTEN

Porcelain Porcelánico Double Firing Bicocción Rectified Rectificado High Variation Contraste de Tonalidad



Corten Oxidum Natural
99,55x99,55 cm - 39,19"x39,19"

G-3284



Corten Oxidum Natural
49,75x99,55 cm - 19,59"x39,19"

G-3186



Corten Oxidum Nat.
Mosaico Hexagonal G-2143
28x30 cm
11,02"x11,81"



Corten Oxidum Nat.
Mosaico 5x5 G-3558
29,75x29,75 cm
11,71"x11,71"

G-3558



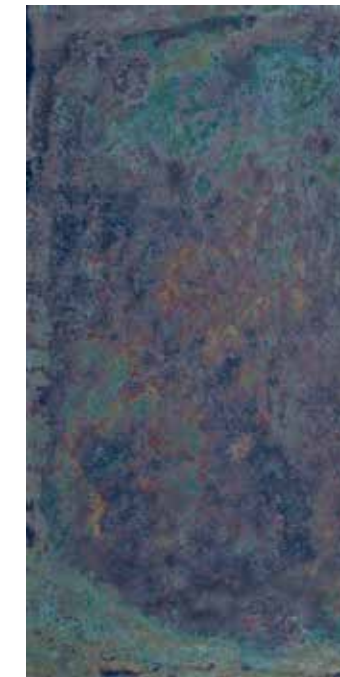
Corten Oxidum Natural
59,55x59,55 cm - 23,45"x23,45"

G-3162



Corten Sapphire Natural
99,55x99,55 cm - 39,19"x39,19"

G-3284

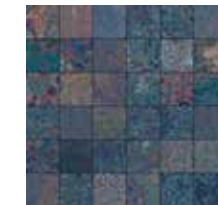


Corten Sapphire Natural
49,75x99,55 cm - 19,59"x39,19"

G-3186



Corten Sapphire Nat.
Mosaico Hexagonal G-2143
28x30 cm
11,02"x11,81"



Corten Sapphire Nat.
Mosaico 5x5 G-3558
29,75x29,75 cm
11,71"x11,71"

G-3558



Corten Sapphire Natural
59,55x59,55 cm - 23,45"x23,45"

G-3162

UNE-ENV 12633

CLASE 2

DIN 51130

R10

ANSI A 137.1-2012

DCOF>0.42

BS 7976

PTV > 36

CONTENT OF RECYCLED MATERIAL
CONTENIDO DE MATERIAL RECICLADO

41%

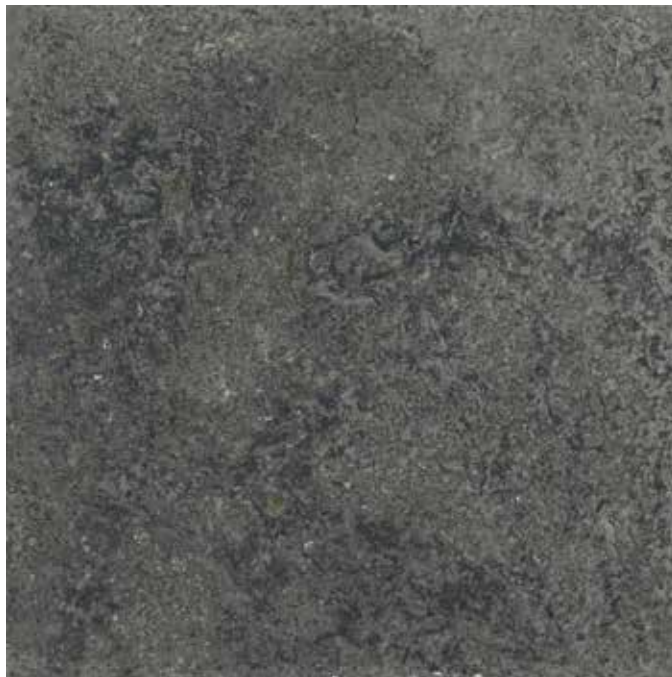
Series	Formato/Thickness	Unit	Boxes/Pallet	m ² /Pallet	m ² /Box	Pieces/Box	Kg/Pallet	Kg/Box
Corten 50X100	49,75x99,55x1 cm	m ²	27	40,12	1,486	3	944	34,10
Corten 100X100	99,55x99,55x1 cm	m ²	40	39,64	0,991	1	991	23,88
Corten 60X60	59,55x59,55x1 cm	m ²	36	51,08	1,419	4	1166	31,75
Corten Nat. Mosaico 5X5	29,75x29,75 cm	m ²	36	22,28	0,619	7	489	12,97
Corten Nat. Mosaico Hex.	28x30 cm	pz	36	16,63	0,462	7	400	10,70
Corten Rodapié	7,3x49,75 cm	pz	24	12,19	0,508	14	296	11,37
Corten Rodapié	7,3x59,55 cm	pz	24	29,21	0,81	18	450	17,80
Corten Rodapié	7,3x99,55 cm	pz	16	17,44	1,09	15	411	24,23



Wall: Corten Sapphire Natural Mosaico Hexagonal 28x30 cm
Floor: Corten Sapphire Natural 99,55x99,55 cm

CORTEN

Porcelain Porcelánico Double Firing Bicocción Rectified Rectificado High Variation Contraste de Tonalidad



Corten Iron Natural
99,55x99,55 cm - 39,19"x39,19"

G-3284

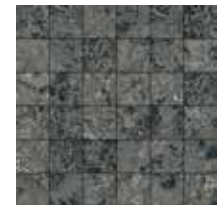


Corten Iron Natural
49,75x99,55 cm - 19,59"x39,19"

G-3186

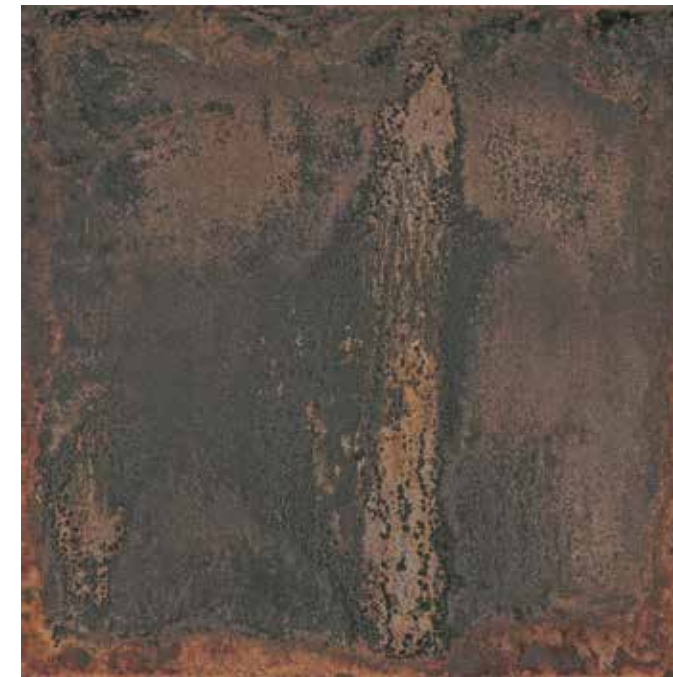


Corten Iron Nat.
Mosaico Hexagonal G-2143
28x30 cm
11,02"x11,81"



Corten Iron Nat.
Mosaico 5x5 G-3558
29,75x29,75 cm
11,71"x11,71"

G-3558



Corten Graphite Natural
99,55x99,55 cm - 39,19"x39,19"

G-3284



Corten Graphite Natural
49,75x99,55 cm - 19,59"x39,19"

G-3186

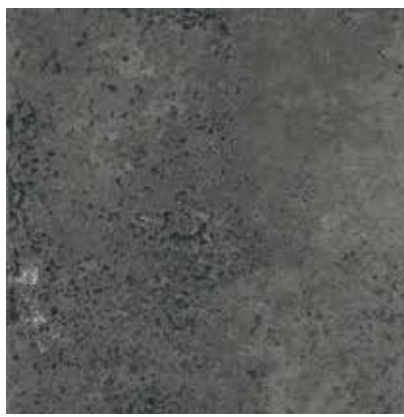


Corten Graphite Nat.
Mosaico Hexagonal G-2143
28x30 cm
11,02"x11,81"



Corten Graphite Nat.
Mosaico 5x5 G-3558
29,75x29,75 cm
11,71"x11,71"

G-3558



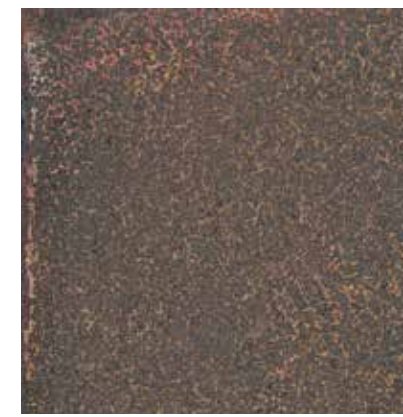
Corten Iron Natural
59,55x59,55 cm - 23,45"x23,45"

G-3162



Wall: Iridium Nacar Ant 29,75x99,55 cm

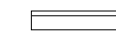
Floor: Corten Iron Natural 59,55x59,55 cm



Corten Graphite Natural
59,55x59,55 cm - 23,45"x23,45"

G-3162

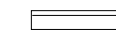
Skirtings | Rodapiés



Corten Natural Rodapié 50 G-2071
7,3x49,75 cm - 2,87"x19,59"

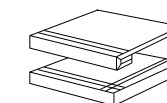


Corten Natural Rodapié 60 G-2071
7,3x59,55 cm - 2,87"x23,45"



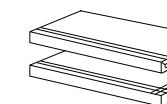
Corten Natural Rodapié 100 G-2115
7,3x99,55 cm - 2,87"x39,19"

Steps | Peldaños

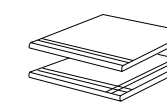


Corten Nat. Grad. G-2723
Corten Nat. Grad. Ang. G-2779
99,55x99,55 cm - 39,19"x39,19"

Corten Nat. Grad. 60 G-2559
Corten Nat. Grad. Ang. 60 G-2609
59,55x59,55 cm - 23,45"x23,45"

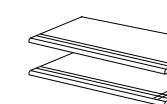


Corten Nat. Grad. 100 G-2655
Corten Nat. Grad. Ang. 100 G-2723
49,75x99,55 cm - 19,59"x39,19"

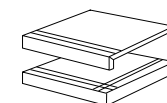


Corten Nat. Peld. G-2541
Corten Nat. Peld. Ang. G-2623
99,55x99,55 cm - 39,19"x39,19"

Corten Nat. Peld. 60 G-2197
Corten Nat. Peld. Ang. 60 G-2287
59,55x59,55 cm - 23,45"x23,45"

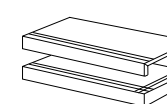


Corten Nat. Peld. 100 G-2337
Corten Nat. Peld. Ang. 100 G-2375
49,75x99,55 cm - 19,59"x39,19"



Corten Nat. Tipo L G-2609
Corten Nat. Tipo L Ang. G-2815
94x99,55 cm - 37,01"x39,19"

Corten Nat. Tipo L 60 G-2375
Corten Nat. Tipo L Ang. 60 G-2585
54x59,55 cm - 21,26"x23,45"



Corten Nat. Tipo L 100 G-2503
Corten Nat. Tipo L Ang. 100 G-2585
44x99,55 cm - 17,32"x39,19"

UNE-ENV 12633

CLASE 2

DIN 51130

R10

ANSI A 137.1-2012

DCOF>0.42

BS 7976

PTV > 36

CONTENT OF RECYCLED MATERIAL
CONTENIDO DE MATERIAL RECICLADO

41%

CORTEN 2CM

Porcelain Double Firing Rectified High Variation Thickness 2CM
 Porcelánico Biccoción Rectificado Contraste de Tonalidad Espesor 2CM



Corten Oxidum Outdoor 2 CM
 49,75x99,55 cm - 19,59"x39,19"
 G-3234



Corten Sapphire Outdoor 2 CM
 49,75x99,55 cm - 19,59"x39,19"
 G-3234



Corten Iron Outdoor 2 CM
 49,75x99,55 cm - 19,59"x39,19"
 G-3234



Corten Graphite Outdoor 2 CM
 49,75x99,55 cm - 19,59"x39,19"
 G-3234

UNE-ENV 12633

CLASE 3

DIN 51130

R11 A+B+C

ANSI A 137.1-2012

DCOF>0.42

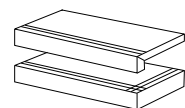
BS 7976

PTV > 36

CONTENT OF RECYCLED MATERIAL
 CONTENIDO DE MATERIAL RECICLADO

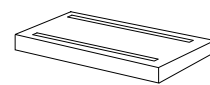
41%

Steps | Peldaños

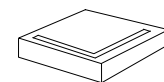


Corten Out. 2 CM Tipo L 100 G-2609
 Corten Out. 2 CM Tipo L Ang. G-2815
 49,75x99,55 cm - 19,59"x39,19"

Grid | Rejilla

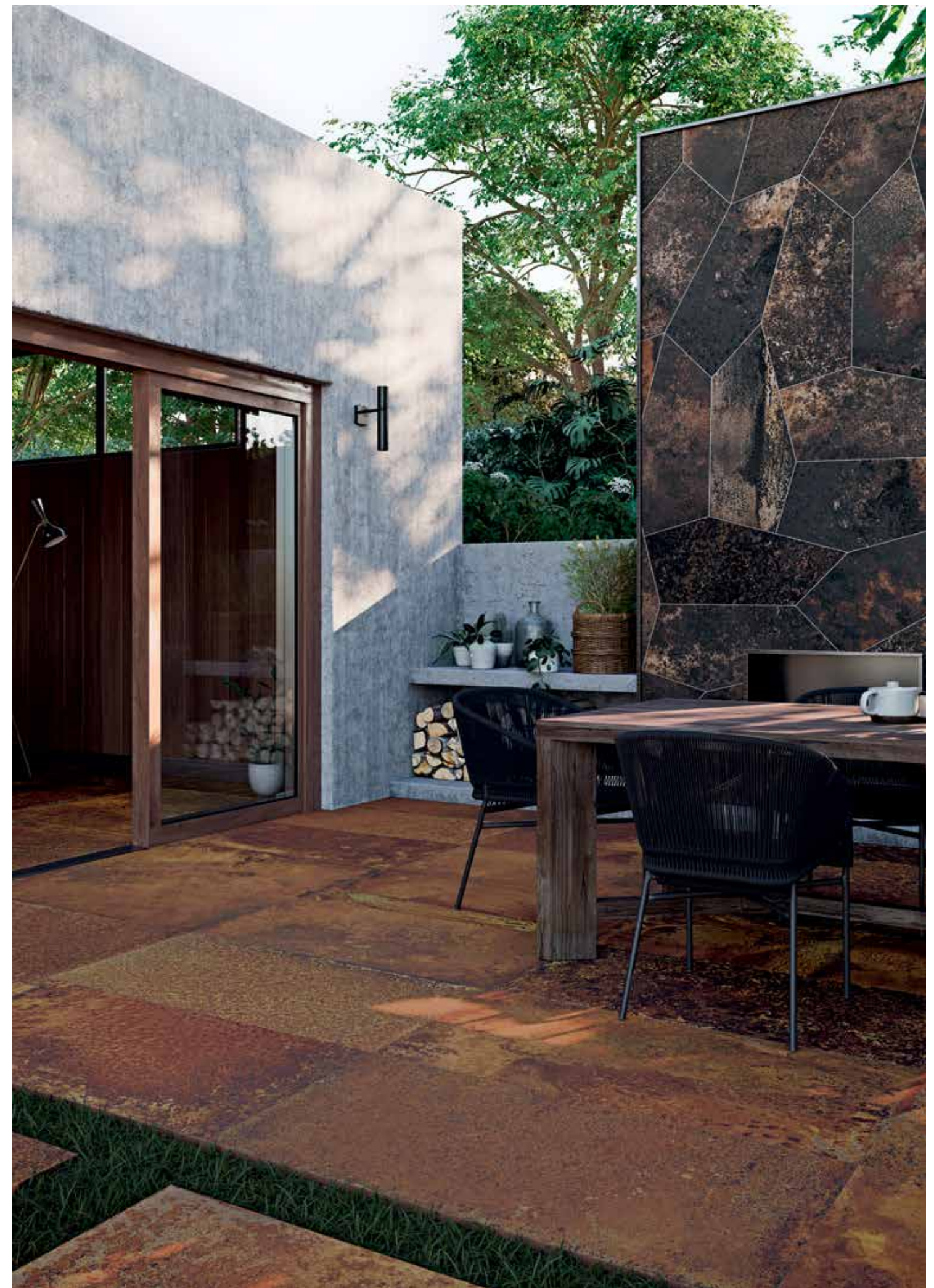


Corten Outdoor 2 CM Grid G-2375
 24,75x99,55 cm - 9,74"x39,19"



Corten Outdoor 2 CM Grid G-2171
 24,75x24,75cm - 9,74"x9,74"

Series	Format & Thickness	Unit	Boxes/Pallet	m ² /Pallet	m ² /Box	Pieces/Box	Kg/Pallet	Kg/Box
Corten 2 CM	49,75x99,55x2 cm	m ²	36	17,82	0,495	1	883	23,59



Wall: Corten Graphite Natural Tangram

Floor: Corten Oxidum Natural 49,75x99,55 cm-Corten Oxidum Outdoor 2CM 49,75x99,55 cm

DSTONE



DSTONE

Porcelain Double Firing Rectified Moderate Variation
 Porcelánico Bicocción Rectificado Moderada Variación



Dstone Sand Music Natural
 99,55x99,55 cm - 39,19"x39,19"
Dstone Sand Music Non-slip
 99,55x99,55 cm - 39,19"x39,19"

G-3268
 G-3298



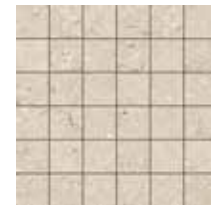
Dstone Sand Music Natural
 49,75x99,55 cm - 19,59"x39,19"

G-3162



Dstone Sand Music Natural Mos. Trencadis
 42,2x34 cm
 16,61"x13,39"

G-2211



Dstone Sand Music Natural Mosaico 5x5
 29,75x29,75 cm
 11,71"x11,71"

G-3558



Dstone Sand Music Natural
 59,55x59,55 cm - 23,45"x23,45"

G-3146



Dstone Ash Lekue Natural
 99,55x99,55 cm - 39,19"x39,19"
Dstone Ash Lekue Non-slip
 99,55x99,55 cm - 39,19"x39,19"

G-3268
 G-3298



Dstone Ash Lekue Natural
 49,75x99,55 cm - 19,59"x39,19"

G-3162



Dstone Ash Lekue Natural Mos. Trencadis
 42,2x34 cm
 16,61"x13,39"

G-2211



Dstone Ash Lekue Natural Mosaico 5x5
 29,75x29,75 cm
 11,71"x11,71"

G-3558



Dstone Ash Lekue Natural
 59,55x59,55 cm - 23,45"x23,45"

G-3146



Floor: Dstone Ash Lekue Natural 49,75x99,55 cm

UNE-ENV 12633

CLASE 1 - Natural Finish
 CLASE 3 - Non-slip Finish

DIN 51130

R10 - Natural Finish
 R11 A+B+C - Non-slip Finish

ANSI A 137.1-2012

DCOF>0.42 - Natural &
 Non-slip Finish

BS 7976

PTV > 24 - Natural Finish
 PTV > 36 - Non-slip Finish

CONTENT OF RECYCLED MATERIAL
 CONTENIDO DE MATERIAL RECICLADO

41%

Series	Format&Thickness	Unit	Boxes/Pallet	m ² /Pallet	m ² /Box	Pieces/Box	Kg/Pallet	Kg/Box
Dstone 50X100	49,75x99,55x1 cm	m ²	27	40,12	1,486	3	944	34,10
Dstone 100X100	99,55x99,55x1 cm	m ²	40	39,64	0,991	1	991	23,88
Dstone 60X60	59,55x59,55x1 cm	m ²	36	51,08	1,419	4	1166	31,75
Dstone Nat. Mosaico 5X5	29,75x29,75 cm	m ²	36	22,28	0,619	7	489	12,97
Dstone Nat. Mosaico Hex.	28x30 cm	pz	36	16,63	0,462	7	400	10,70
Dstone Rodapié	7,3x49,75 cm	pz	24	12,19	0,508	14	296	11,37
Dstone Rodapié	7,3x59,55 cm	pz	24	29,21	0,81	18	450	17,80
Dstone Rodapié	7,3x99,55 cm	pz	16	17,44	1,09	15	411	24,23

DSTONE

Porcelain Double Firing Rectified Moderate Variation
 Porcelánico Bicocción Rectificado Moderada Variación



Dstone Anthracite Moon Natural
 99,55x99,55 cm - 39,19"x39,19"
 Dstone Anthracite Moon Non-slip
 99,55x99,55 cm - 39,19"x39,19"

G-3268
 G-3298



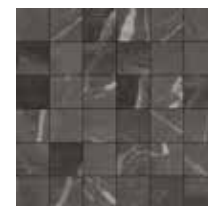
Dstone Anthracite Moon Natural
 49,75x99,55 cm - 19,59"x39,19"

G-3162



Dstone Anthracite Moon Natural Mos. Trencadis
 42,2x34 cm
 16,61"x13,39"

G-2211



Dstone Anthracite Moon Natural Mosaico 5x5
 29,75x29,75 cm
 11,71"x11,71"

G-3558



Dstone Anthracite Moon Natural
 59,55x99,55 cm - 23,45"x23,45"

G-3146

Skirtings | Rodapiés

- Dstone Natural Rodapié 50 G-2071
 7,3x49,75 cm - 2,87"x19,59"
- Dstone Natural Rodapié 60 G-2071
 7,3x59,55 cm - 2,87"x23,45"
- Dstone Natural Rodapié 100 G-2115
 7,3x99,55 cm - 2,87"x39,19"

Steps | Peldaños

- | | | | | | | | | |
|--|---|------------------|--|---|------------------|--|--|------------------|
| | Dstone Nat. Grad.
Dstone Nat. Grad. Ang.
99,55x99,55 cm - 39,19"x39,19" | G-2723
G-2779 | | Dstone Nat. Peld.
Dstone Nat. Peld. Ang.
99,55x99,55 cm - 39,19"x39,19" | G-2541
G-2623 | | Dstone Nat. Tipo L
Dstone Nat. Tipo L Ang.
94x99,55 cm - 37,01"x39,19" | G-2609
G-2815 |
| | Dstone Nat. Grad. 60
Dstone Nat. Grad. Ang. 60
59,55x99,55 cm - 23,45"x23,45" | G-2559
G-2609 | | Dstone Nat. Peld. 60
Dstone Nat. Peld. Ang. 60
59,55x99,55 cm - 23,45"x23,45" | G-2197
G-2287 | | Dstone Nat. Tipo L 60
Dstone Nat. Tipo L Ang. 60
54x99,55 cm - 21,26"x23,45" | G-2375
G-2585 |
| | Dstone Nat. Grad. 100
Dstone Nat. Grad. Ang. 100
49,75x99,55 cm - 19,59"x39,19" | G-2655
G-2723 | | Dstone Nat. Peld. 100
Dstone Nat. Peld. Ang. 100
49,75x99,55 cm - 19,59"x39,19" | G-2337
G-2375 | | Dstone Nat. Tipo L 100
Dstone Nat. Tipo L Ang. 100
44x99,55 cm - 17,32"x39,19" | G-2503
G-2585 |

UNE-ENV 12633

CLASE 1 - Natural Finish
 CLASE 3 - Non-slip Finish

DIN 51130

R10 - Natural Finish
 R11 A+B+C - Non-slip Finish

ANSI A 137.1-2012

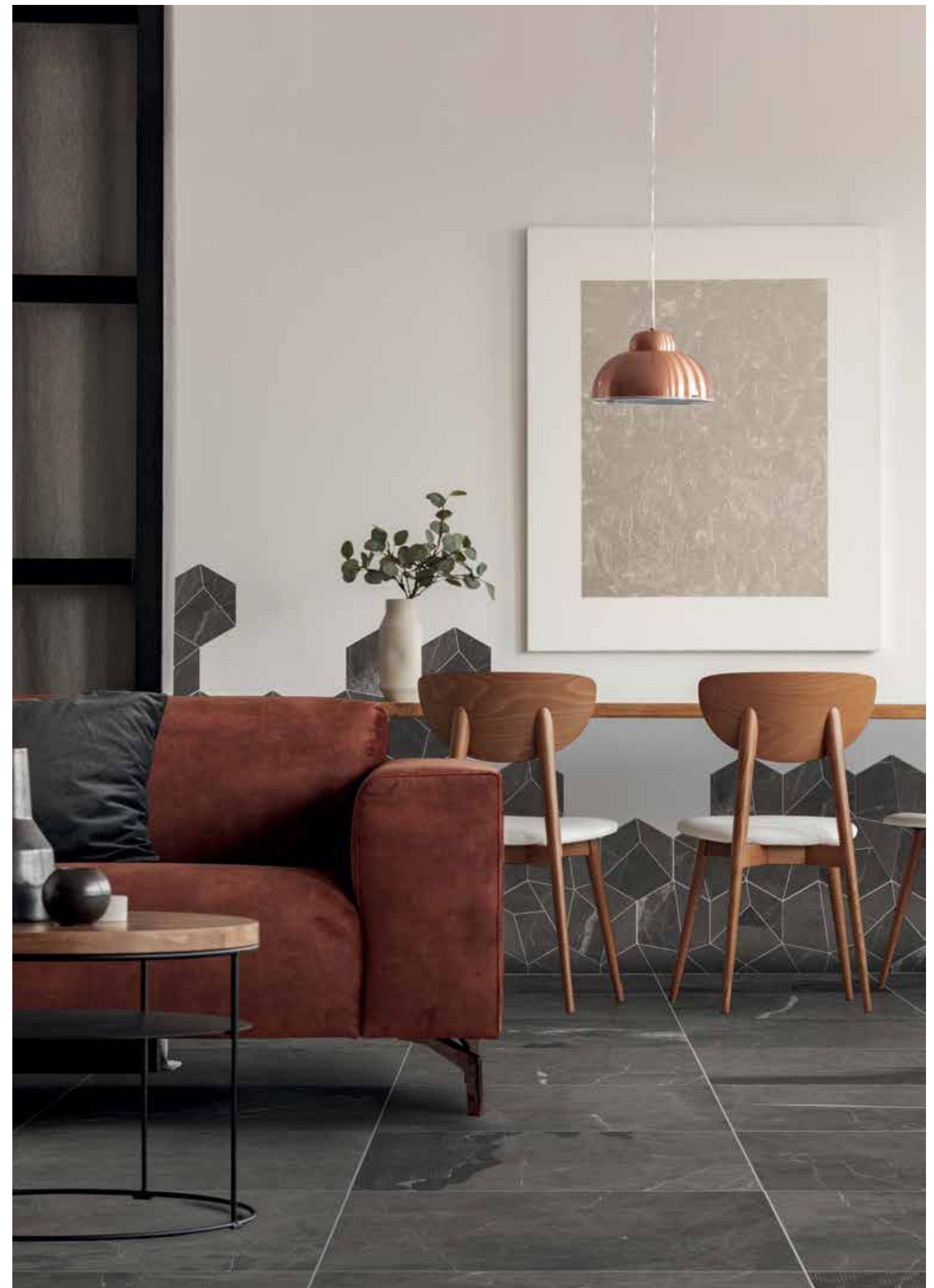
DCOF>0.42 - Natural &
 Non-slip Finish

BS 7976

PTV > 24 - Natural Finish
 PTV > 36 - Non-slip Finish

CONTENT OF RECYCLED MATERIAL
 CONTENIDO DE MATERIAL RECICLADO

41%



Wall: Dstone Anthracite Moon Nat. Mos. Trencadis 42,2x34 cm

Floor: Dstone Anthracite Moon Natural 59,55x99,55 cm

DSTONE 2CM

Porcelain / Porcelánico | Double Firing / Bicocción | Rectified / Rectificado | Moderate Variation / Moderada Variación | Thickness 2CM / Espesor 2CM



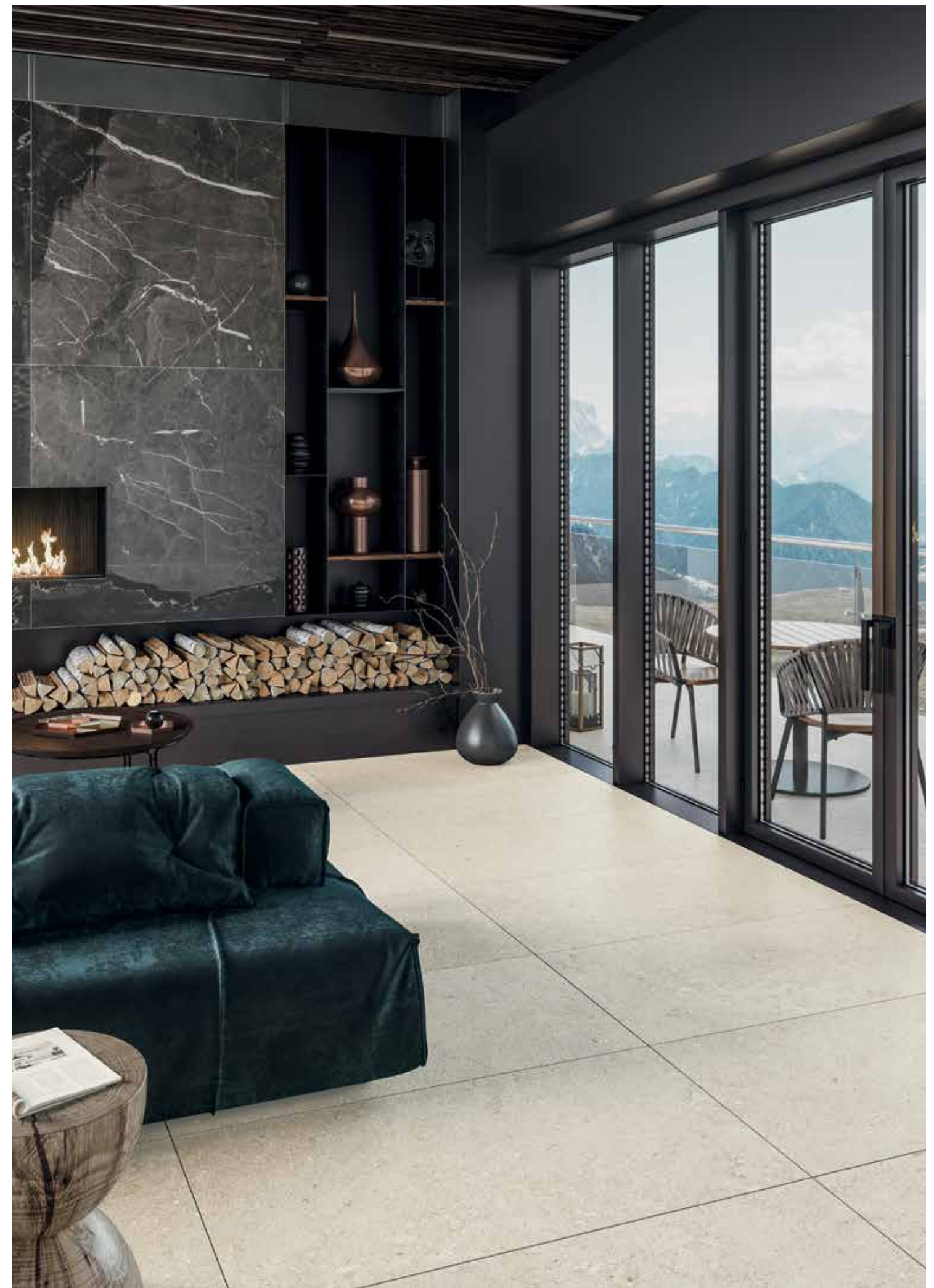
Dstone Sand Music Outdoor 2 CM
49,75x99,55 cm - 19,59"x39,19"
G-3234



Dstone Ash Lekue Outdoor 2 CM
49,75x99,55 cm - 19,59"x39,19"
G-3234



Dstone Anthracite Moon Outdoor 2 CM
49,75x99,55 cm - 19,59"x39,19"
G-3234



Wall: Dstone Anthracite Moon Natural 99,55x99,55 cm | Floor: Dstone Sand Music Natural_Sand Music Outdoor 2CM 49,75x99,55 cm

UNE-ENV 12633

CLASE 3

DIN 51130

R11 A+B+C

ANSI A 137.1-2012

DCOF>0.42

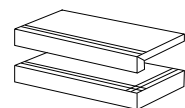
BS 7976

PTV > 36

CONTENT OF RECYCLED MATERIAL
CONTENIDO DE MATERIAL RECICLADO

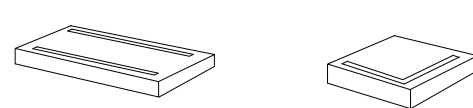
41%

Steps | Peldaños



Dstone Out. 2 CM Tipo L 100 G-2609
Dstone Out. 2 CM Tipo L Ang. G-2815
49,75x99,55 cm - 19,59"x39,19"

Grid | Rejilla



Dstone Outdoor 2 CM Grid G-2375 24,75x99,55 cm - 9,74"x39,19"
Dstone Outdoor 2 CM Grid G-2171 24,75x24,75cm - 9,74"x9,74"

Series	Format & Thickness	Unit	Boxes/Pallet	m ² /Pallet	m ² /Box	Pieces/Box	Kg/Pallet	Kg/Box
Dstone 2 CM	49,75x99,55x2 cm	m ²	36	17,82	0,495	1	883	23,59

DSTONE



Wall: Dstone Grey Moon Brillo_Grey Moon Ant Brillo 29,75x99,55 cm-Dstone Anthracite Moon Mos. 2,5x2,5 Brillo-Geneva Silver Lista

Floor: Dstone Anthracite Moon Natural 49,75x99,55 cm

DSTONE

Wall tiles White Body Double Firing Moderate Variation Digital 0,75 cm Thickness
 Revestimiento Pasta Blanca Bicocción Moderada Variación Digital 0,75 cm Espesor



Dstone Sand Music
29,75x99,55 cm - 11,71"x39,19"

G-575



Dstone Ash Lekue
29,75x99,55 cm - 11,71"x39,19"

G-575



Dstone Sand Music Ant
29,75x99,55 cm - 11,71"x39,19"

G-578



Dstone Ash Lekue Ant
29,75x99,55 cm - 11,71"x39,19"

G-578



Dstone Sand Music Brillo
29,75x99,55 cm - 11,71"x39,19"

G-576



Dstone Ash Lekue Brillo
29,75x99,55 cm - 11,71"x39,19"

G-576



Dstone Sand Music Ant Brillo
29,75x99,55 cm - 11,71"x39,19"

G-580



Dstone Ash Lekue Ant Brillo
29,75x99,55 cm - 11,71"x39,19"

G-580



Cosmos Decor
29,75x99,55 cm - 11,71"x39,19"

G-349



*Side View Corner 30
Perfil Corner 30

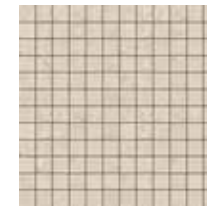
Dstone Corner 30
1,5x29,75 cm - 0,59"x11,71"

G-330

Dstone Corner is available in all colours of collection | Dstone Corner está disponibles en todos los colores de la colección

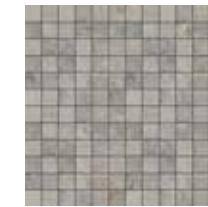
Series	Formato/Thickness	Unit	Boxes/Pallet	m ² /Pallet	m ² /Box	Pieces/Box	Kg/Pallet	Kg/Box
Dstone / Ornato / Ant	29,75x99,5x0,74 cm	m2	44	78,32	1,780	6	1100	24,61
Albus Gold - Silver Plate	29,75x99,5x0,74 cm	pz	21	18,67	0,889	3	300	13,5
Cosmos Decor	29,75x99,5x0,74 cm	pz	44	65,12	1,480	5	950	21,21
Dstone Corner	1,5x29,75 cm	pz	21	24,88	1,185	4	380	17
Geneva Lista	1x99,55 cm	pz	15	4,49	0,299	30	70	3,10
Reid Lista	1x99,55 cm	pz	15	15,52	1,035	104	166	10,13
Dstone Mos. 2,5x2,5	29,75x29,75 cm	pz	36	28,69	0,797	9	361	9,40

Matching PVD tiles / PVD coordinado



Dstone Sand Music Mosaico 2,5x2,5
29,75x29,75 cm - 11,71"x11,71"

G-618



Dstone Ash Lekue Mosaico 2,5x2,5
29,75x29,75 cm - 11,71"x11,71"

G-618



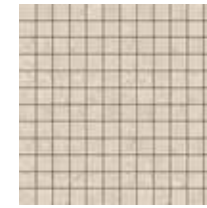
Glimpse Gold Ant
29,75x99,55 cm - 11,71"x39,19"

G-349



Glimpse Silver Ant
29,75x99,55 cm - 11,71"x39,19"

G-349



Dstone Sand Music Mosaico 2,5x2,5 Brillo
29,75x29,75 cm - 11,71"x11,71"

G-618



Dstone Ash Lekue Mosaico 2,5x2,5 Brillo
29,75x29,75 cm - 11,71"x11,71"

G-618



Glaciar Gold Ant
29,75x99,55 cm - 11,71"x39,19"

G-349



Glaciar Silver Ant
29,75x99,55 cm - 11,71"x39,19"

G-349



Wall: Dstone Ash Lekue_Ash Lekue Ant 29,75x99,55 cm-Geneva Copper Lista

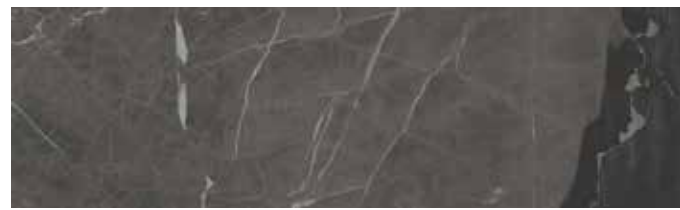
DSTONE

Wall tiles White Body Double Firing Moderate Variation Digital 0,75 cm Thickness
 Revestimiento Pasta Blanca Bicocción Moderada Variación Digital 0,75 cm Espesor



Dstone Grey Moon
29,75x99,55 cm - 11,71"x39,19"

G-575



Dstone Anthracite Moon
29,75x99,55 cm - 11,71"x39,19"

G-575



Dstone Grey Moon Ant
29,75x99,55 cm - 11,71"x39,19"

G-578



Dstone Anthracite Moon Ant
29,75x99,55 cm - 11,71"x39,19"

G-578



Dstone Grey Moon Brillo
29,75x99,55 cm - 11,71"x39,19"

G-576



Dstone Anthracite Moon Brillo
29,75x99,55 cm - 11,71"x39,19"

G-576



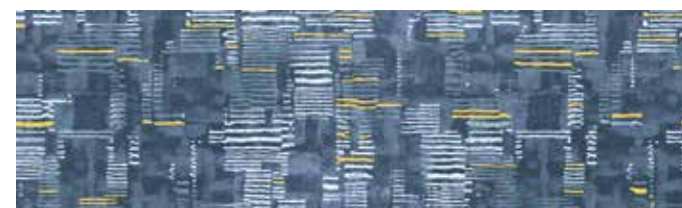
Dstone Grey Moon Ant Brillo
29,75x99,55 cm - 11,71"x39,19"

G-580



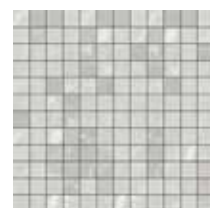
Dstone Anthracite Moon Ant Brillo
29,75x99,55 cm - 11,71"x39,19"

G-580



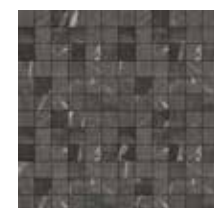
Dstone Ornato*
29,75x99,55 cm - 11,71"x39,19"

G-611



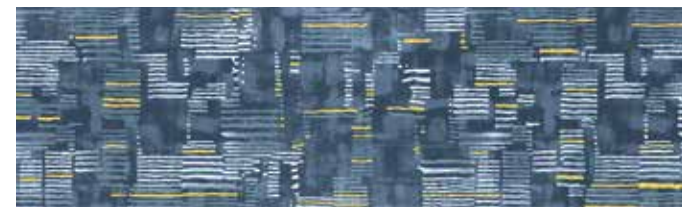
Dstone Grey Moon Mos. 2,5x2,5
29,75x29,75 cm
11,71"x11,71"

G-618



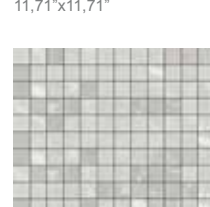
Dstone Anthracite Moon Mos. 2,5x2,5
29,75x29,75 cm
11,71"x11,71"

G-618



Dstone Ornato Brillo*
29,75x99,55 cm - 11,71"x39,19"

G-611



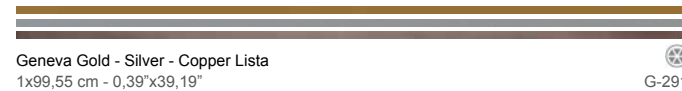
Dstone Grey Moon Mos. 2,5x2,5 Brillo
29,75x29,75 cm
11,71"x11,71"

G-618



Dstone Anthracite Moon Mos. 2,5x2,5 Brillo
29,75x29,75 cm
11,71"x11,71"

G-618



Geneva Gold - Silver - Copper Lista
1x99,55 cm - 0,39"x39,19"

G-291



Reid Plata Mate Lista
1x99,55 cm - 0,39"x39,19"

G-261

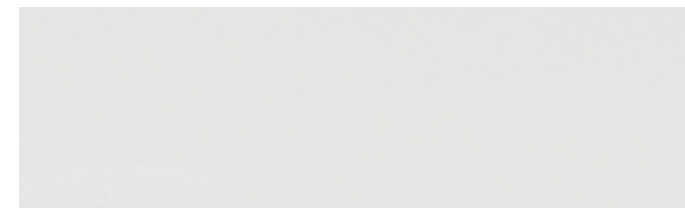
*Dstone Ornato consists of 8 different aleatory patterns |
 *Dstone Ornato se compone de 8 decoraciones diferentes aleatorias



Wall: Dstone Ornato 29,75x99,55 cm

IRIDIUM

Wall tiles White Body Double Firing Uniform Appearance 0,75 cm Thickness
 Revestimiento Pasta Blanca Bicocción Aspecto Uniforme 0,75 cm Espesor



Glimpse White
29,75x99,55 cm - 11,71"x39,19" G-571



Iridium Nacar Ant
29,75x99,55 cm - 11,71"x39,19" G-580



Iridium Gold Ant
29,75x99,55 cm - 11,71"x39,19" G-580



Iridium Lead Ant
29,75x99,55 cm - 11,71"x39,19" G-592



Iridium Copper Ant
29,75x99,55 cm - 11,71"x39,19" G-580



Iridium Cherry Ant
29,75x99,55 cm - 11,71"x39,19" G-580



Geneva Gold - Silver - Copper Lista
1x99,55 cm - 0,39"x39,19" G-291



Reid Plata Mate Lista
1x99,55 cm - 0,39"x39,19" G-261

Series	Format&Thickness	Unit	Boxes/Pallet	m ² /Pallet	m ² /Box	Pieces/Box	Kg/Pallet	Kg/Box
Iridium	29,75x99,55x0,74 cm	m2	44	78,32	1,780	6	1100	24,61
Geneva Lista	1x99,55 cm	pz	15	4,49	0,299	30	70	3,10
Reid Lista	1x99,55 cm	pz	15	15,52	1,035	104	166	10,13



Wall: Iridium Copper Ant 29,75x99,55 cm Floor: Dstone Music Sand Natural 99,55x99,55 cm

VIVID



VIVID

Porcelain Double Firing Rectified Moderate Variation 0,74 cm Thickness
 Porcelánico Bicción Rectificado Moderada Variación 0,74 cm Espesor



Vivid White Calacatta Pulido
89,46x89,46 cm - 35,22"x35,22"

G-3442



Vivid White Calacatta Pulido
59,55x59,55 cm - 23,45"x23,45"

G-3298



Vivid Stamp Pulido
89,46x89,46 cm - 35,22"x35,22"

G-3456



Vivid Stamp Pulido
59,55x59,55 cm - 23,45"x23,45"

G-3314

*Vivid Stamp Pulido consists of 8 different aleatory patterns |
 *Vivid Stamp Pulido se compone de 8 decoraciones diferentes aleatorias



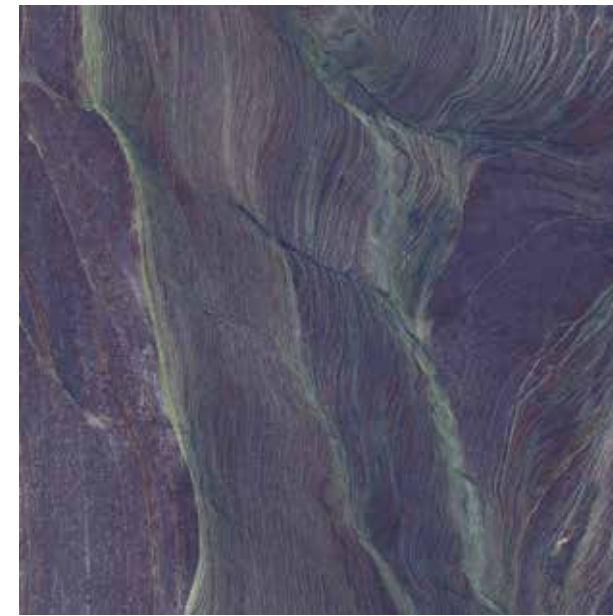
Vivid Red Louise Pulido
89,46x89,46 cm - 35,22"x35,22"

G-3442



Vivid Red Louise Pulido
59,55x59,55 cm - 23,45"x23,45"

G-3298



Vivid Lavender Granite Pulido
89,46x89,46 cm - 35,22"x35,22"

G-3442



Vivid Lavender Granite Pulido
59,55x59,55 cm - 23,45"x23,45"

G-3298

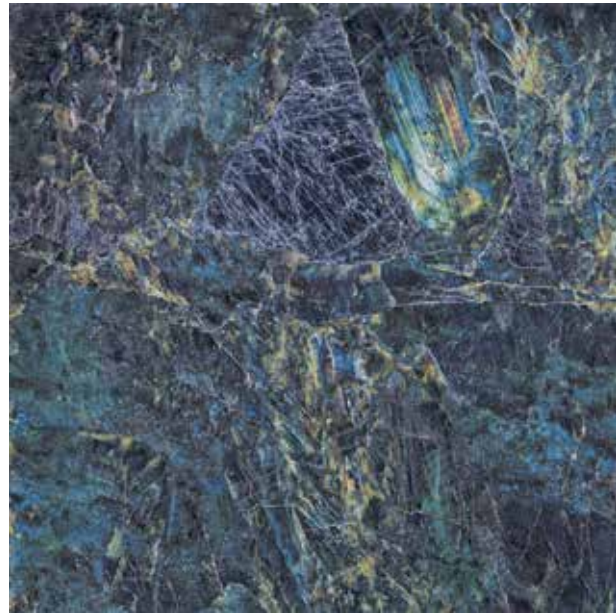
Recommended for residential use
 Recomendado para uso residencial

CONTENT OF RECYCLED MATERIAL
 CONTENIDO DE MATERIAL RECICLADO
42%

Series	Format&Thickness	Unit	Boxes/Pallet	m ² /Pallet	m ² /Box	Pieces/Box	Kg/Pallet	Kg/Box
Vivid Pulido 90X90	89,46x89,46x0,74	m2	20	32,02	1,601	2	590	28,36
Vivid Pulido 60X60	59,55x59,55x0,74	m2	30	53,19	1,773	5	950	30,90
Vivid Pul. Rodapie 90	7,3x89,46	pz	15	15,67	1,045	16	418	26,36
Vivid Pul. Rodapie 60	7,3x59,55	pz	24	19,44	0,81	18	450	17,81

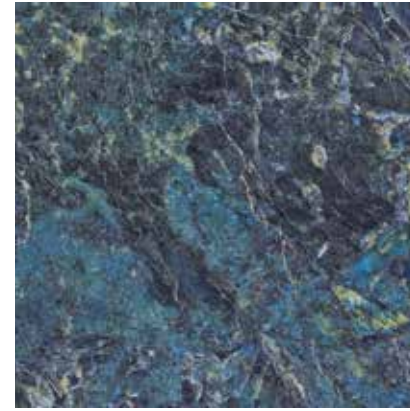
VIVID

Porcelain Double Firing Rectified Moderate Variation 0,74 cm Thickness
 Porcelánico Biccoción Rectificado Moderada Variación 0,74 cm Espesor



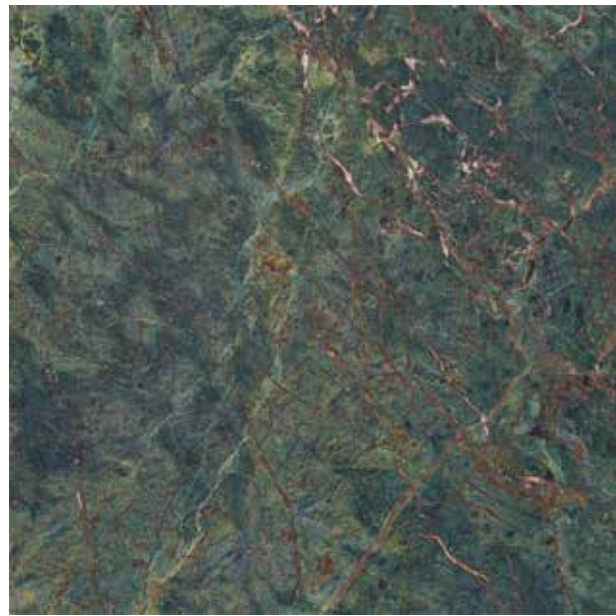
Vivid Blue Labradorite Pulido
89,46x89,46 cm - 35,22"x35,22"

G-3442



Vivid Blue Labradorite Pulido
59,55x59,55 cm - 23,45"x23,45"

G-3298



Vivid Green Rainforest Pulido
89,46x89,46 cm - 35,22"x35,22"

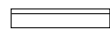
G-3442



Vivid Green Rainforest Pulido
59,55x59,55 cm - 23,45"x23,45"

G-3298

Skirtings | Rodapiés

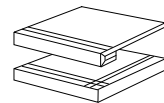


Vivid Pulido Rodapié 90
7,3x89,46 cm - 2,87"x35,22"

G-2141

Vivid Pulido Rodapié 60
7,3x59,55 cm - 2,87"x23,45"

G-2071



Vivid Pulido Grad. 90
Vivid Pulido Grad. Ang. 90
89,46x89,46 cm - 35,22"x35,22"

G-2779

G-2829

Vivid Pulido Grad. 60
Vivid Pulido Grad. Ang. 60
59,55x59,55 cm - 23,45"x23,45"

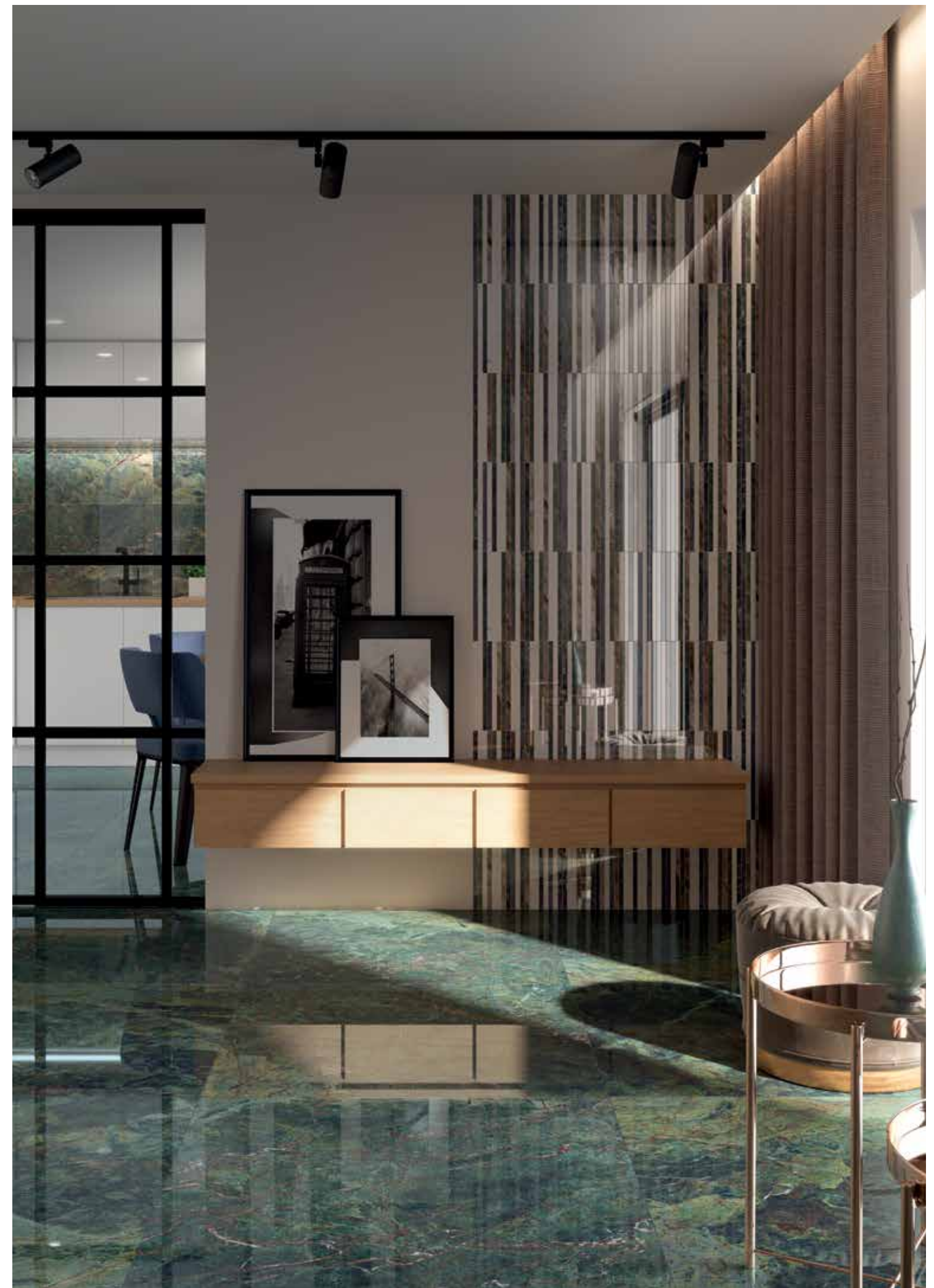
G-2559

G-2609

Recommended for residential use
Recomendado para uso residencial

CONTENT OF RECYCLED MATERIAL
CONTENIDO DE MATERIAL RECICLADO

42%

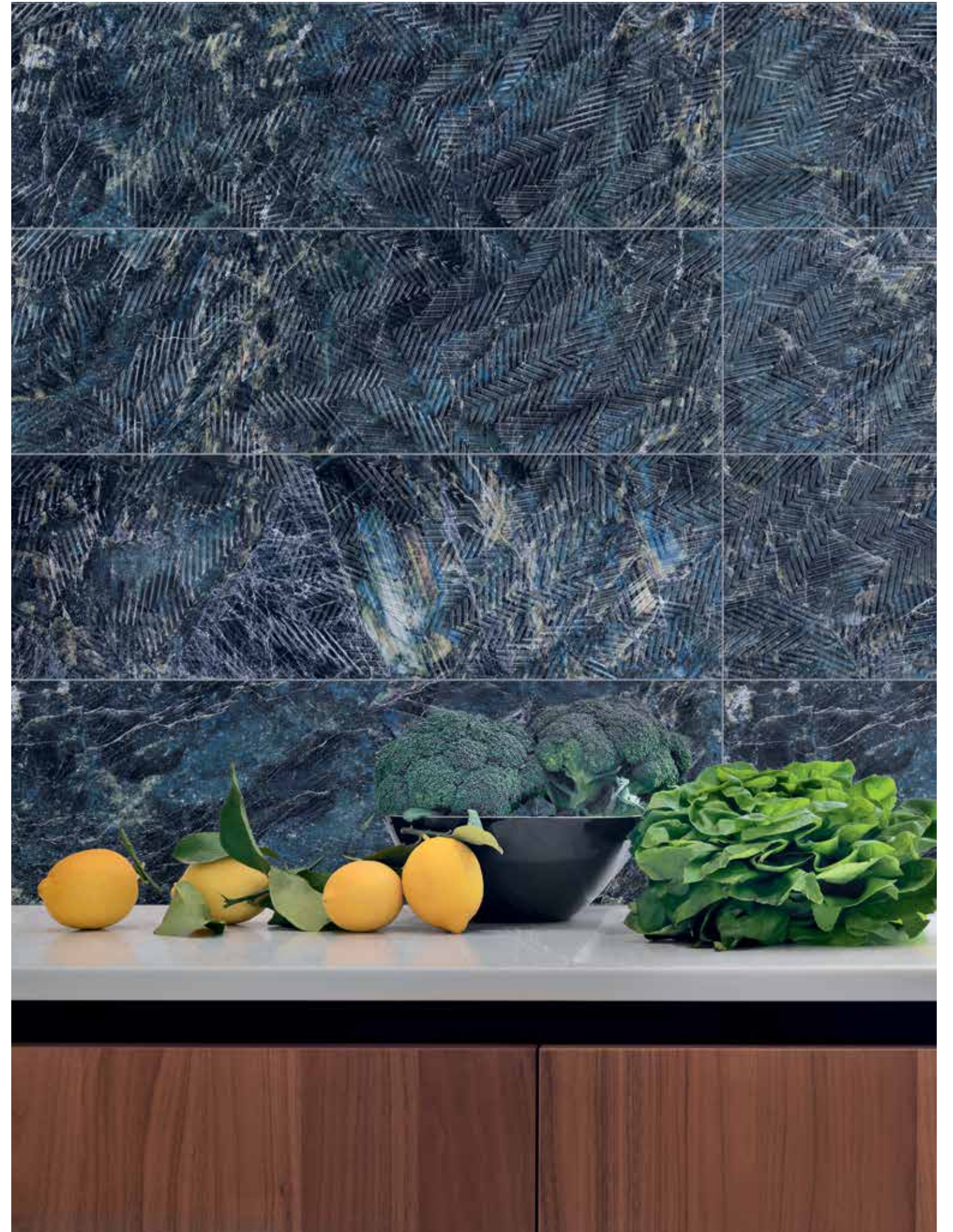


Wall: Vivid Green Rainforest 29,75x99,55 cm-Vivid Lines Mix Mos Floor: Vivid Green Rainforest Pulido 89,46x89,46 cm

VIVID



Wall: Vivid White Calacatta_Ornato 29,75x99,55 cm-Geneva Gold Lista Floor: Vivid White Calacatta 59,55x59,55 cm



Wall: Vivid Blue Labradorite_Blue Labradorite Floret 29,75x99,55 cm

VIVID

Wall tiles White Body Rectified Double Firing Moderate Variation Digital 0,75 cm Thickness
 Revestimiento Pasta Blanca Rectificado Bicocción Moderada Variación Digital 0,75 cm Espesor



Vivid White Calacatta
29,75x99,55 cm - 11,71"x39,19"



Vivid Red Louise
29,75x99,55 cm - 11,71"x39,19"



Vivid White Calacatta Floret
29,75x99,55 cm - 11,71"x39,19"



Vivid Red Louise Floret
29,75x99,55 cm - 11,71"x39,19"



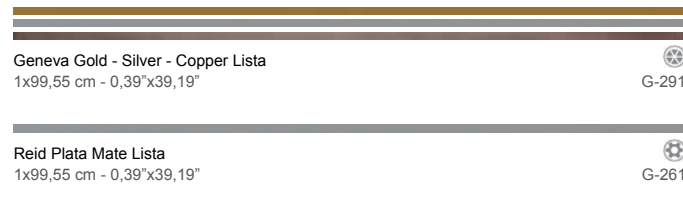
Vivid White Calacatta Breeze
29,75x99,55 cm - 11,71"x39,19"



Vivid Red Louise Breeze
29,75x99,55 cm - 11,71"x39,19"



Vivid Ornato*
29,75x99,55 cm - 11,71"x39,19"

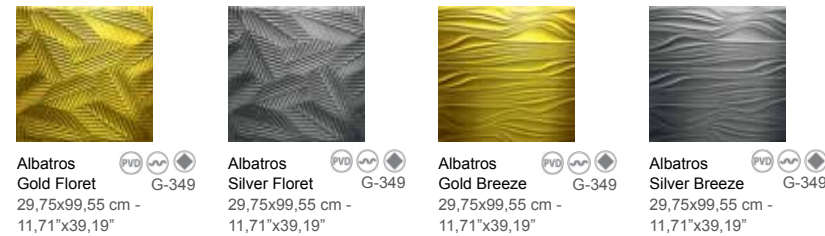


Geneva Gold - Silver - Copper Lista
1x99,55 cm - 0,39"x39,19"

Reid Plata Mate Lista
1x99,55 cm - 0,39"x39,19"

*Vivid Ornato consists of 10 different aleatory patterns |
 *Vivid Ornato se compone de 10 decoraciones diferentes aleatorias

Matching PVD tiles / PVD coordinado

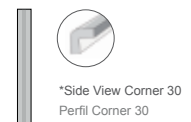


Albatros Gold Floret G-349
29,75x99,55 cm - 11,71"x39,19"

Albatros Silver Floret G-349
29,75x99,55 cm - 11,71"x39,19"

Albatros Gold Breeze G-349
29,75x99,55 cm - 11,71"x39,19"

Albatros Silver Breeze G-349
29,75x99,55 cm - 11,71"x39,19"



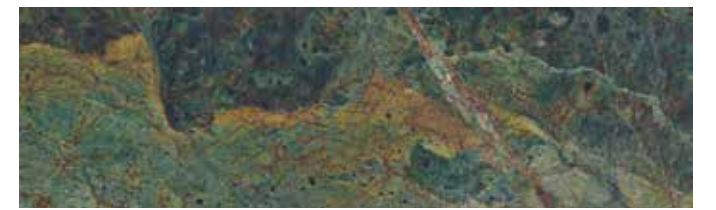
Vivid Corner 30
1,5x29,75 cm - 0,59"x11,71"

Vivid Corner is available in all colours of collection |
 Vivid Corner está disponibles en todos los colores de la colección

Series	Format&Thickness	Unit	Boxes/Pallet	m ² /Pallet	m ² /Box	Pieces/Box	Kg/Pallet	Kg/Box
Vivid / Ornato	29,75x99,5x0,74 cm	m2	44	78,32	1,780	6	1100	24,61
Vivid Floret - Breeze	29,75x99,5x0,74 cm	m2	44	65,12	1,480	5	950	21,21
Albatros Floret - Breeze	29,75x99,5x0,74 cm	pz	21	18,67	0,889	3	300	13,5
Vivid Corner	1,5x29,75 cm	pz	36	3,85	0,107	24	100	2,40
Geneva Lista	1x99,55 cm	pz	15	4,49	0,299	30	70	3,10
Reid Lista	1x99,55 cm	pz	15	15,52	1,035	104	166	10,13
Vivid Mos. 2,5x2,5	29,75x29,75 cm	pz	36	28,69	0,797	9	361	9,40



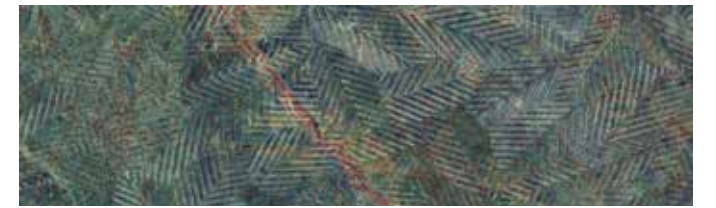
Vivid Lavender Granite
29,75x99,55 cm - 11,71"x39,19"



Vivid Green Rainforest
29,75x99,55 cm - 11,71"x39,19"



Vivid Lavender Granite Floret
29,75x99,55 cm - 11,71"x39,19"



Vivid Green Rainforest Floret
29,75x99,55 cm - 11,71"x39,19"



Vivid Lavender Granite Breeze
29,75x99,55 cm - 11,71"x39,19"



Vivid Green Rainforest Breeze
29,75x99,55 cm - 11,71"x39,19"



Vivid Blue Labradorite
29,75x99,55 cm - 11,71"x39,19"



Vivid White Calacatta Mosaico 2,5x2,5
29,75x29,75 cm - 11,71"x11,71"

Vivid Red Louise Mosaico 2,5x2,5
29,75x29,75 cm - 11,71"x11,71"

Vivid Lavender Granite Mosaico 2,5x2,5
29,75x29,75 cm - 11,71"x11,71"



Vivid Blue Labradorite Floret
29,75x99,55 cm - 11,71"x39,19"



Vivid Blue Labradorite Mosaico 2,5x2,5
29,75x29,75 cm - 11,71"x11,71"

Vivid Green Rainforest Mosaico 2,5x2,5
29,75x29,75 cm - 11,71"x11,71"

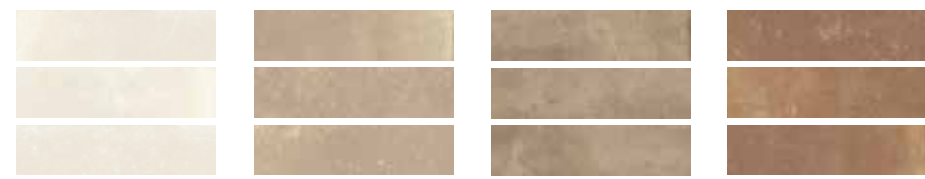
Vivid Lines Mix Mos.
29,75x29,75 cm - 11,71"x11,71"



Vivid Blue Labradorite Breeze
29,75x99,55 cm - 11,71"x39,19"

COTTO

Wall tiles White Body Double Firing Moderate Variation Digital 0,85 cm Thickness
 Revestimiento Pasta Blanca Bicocción Moderada Variación Digital 0,85 cm Espesor



Cotto White 7,4x29,75 cm - 2,91"x11,71" G-553
Cotto Sand 7,4x29,75 cm - 2,91"x11,71" G-553
Cotto Brown 7,4x29,75 cm - 2,91"x11,71" G-553
Cotto Rosso 7,4x29,75 cm - 2,91"x11,71" G-553



Cotto White Amiata 7,4x29,75 cm - 2,91"x11,71" G-553
Cotto Sand Amiata 7,4x29,75 cm - 2,91"x11,71" G-553
Cotto Brown Amiata 7,4x29,75 cm - 2,91"x11,71" G-553
Cotto Rosso Amiata 7,4x29,75 cm - 2,91"x11,71" G-553

Cotto Amiata consists of 4 different aleatory reliefs |
 Cotto Amiata se compone de 4 relieves diferentes aleatorios



Cotto Caramel 7,4x29,75 cm - 2,91"x11,71" G-575
Cotto Olive 7,4x29,75 cm - 2,91"x11,71" G-575
Cotto Ornato 7,4x29,75 cm - 2,91"x11,71" G-553

*Cotto Ornato consists of 56 different aleatory patterns |
 *Cotto Ornato se compone de 56 decoraciones diferentes aleatorias



Cotto Caramel Amiata 7,4x29,75 cm - 2,91"x11,71" G-575
Cotto Olive Amiata 7,4x29,75 cm - 2,91"x11,71" G-575

Matching floor tiles / Pavimento coordinado



Cotto Natural 50x100 cm - 19,69"x39,37" G-3140
 59,2x59,2 cm - 23,3"x23,3" G-3132
 30,5x30,5 cm - 12,01"x12,01" G-3114

Series	Formato/Thickness	Unit	Boxes/Pallet	m ² /Pallet	m ² /Box	Pieces/Box	Kg/Pallet	Kg/Box
Cotto	7,4x29,75x0,85 cm	m ²	54	54,54	1,01	46	860	15,47
Cotto Amiata	7,4x29,75x0,85 cm	m ²	54	49,7	0,92	42	790	14,14



Wall: Cotto Ornato_Rosso 7,4x29,75 cm Floor: Cotto Rosso Natural 50x100 cm

BOHEMIAN



Wall: Bohemian Sand_Blue 29,75x99,55 cm-Bohemian Sand Mos. 2,5x2,5

Floor: Bohemian Blue Natural 99,55x99,55 cm-Bohemian Blue Natural Mos. 5x5

BOHEMIAN

Wall tiles **White Body** **Rectified** **Double Firing** **Moderate Variation** **Digital** **0,75 cm Thickness**
Revestimiento **Pasta Blanca** **Rectificado** **Bicoccción** **Moderada Variación** **Digital** **0,75 cm Espesor**



Bohemian Sand
29,75x99,55 cm - 11,71"x39,19"



Bohemian Blue
29,75x99,55 cm - 11,71"x39,19"



Bohemian Blend
29,75x99,55 cm - 11,71"x39,19"

Bohemian 30X100 cm consists of 19 different aleatory patterns |
Bohemian 30X100 cm se compone de 19 decoraciones diferentes aleatorias



Bohemian Sand Mosaico 2,5x2,5
29,75x29,75 cm
11,71"x11,71"



Bohemian Blue Mosaico 2,5x2,5
29,75x29,75 cm
11,71"x11,71"



Bohemian Blend Mosaico 2,5x2,5
29,75x29,75 cm
11,71"x11,71"



Ronda Ivory
29,75x99,55 cm - 11,71"x39,19"



Ronda Grey
29,75x99,55 cm - 11,71"x39,19"



Ronda Beige
29,75x99,55 cm - 11,71"x39,19"

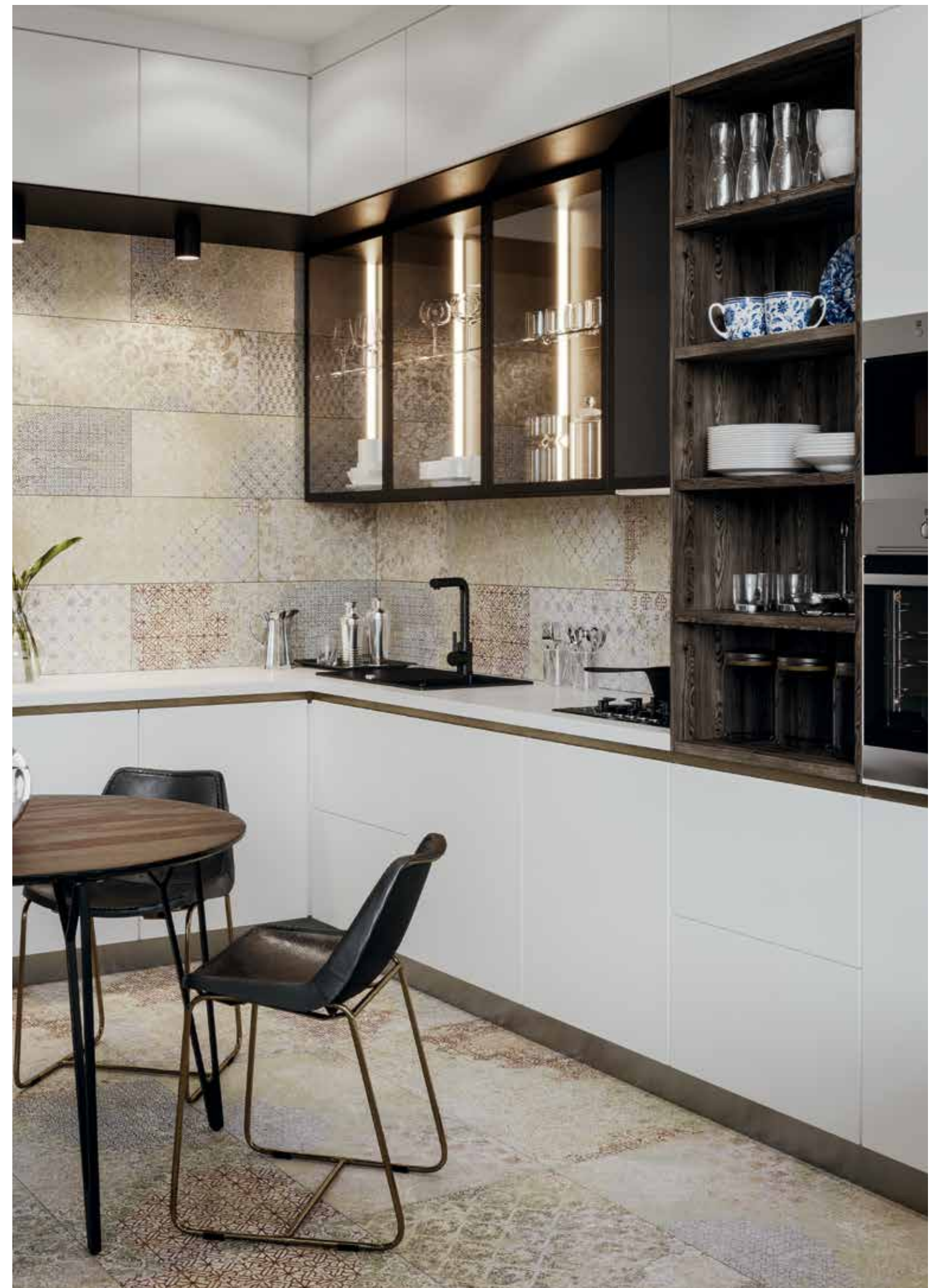


Geneva Gold - Silver - Copper Lista
1x99,55 cm - 0,39"x39,19"



Reid Plata Mate Lista
1x99,55 cm - 0,39"x39,19"

Series	Format@Thickness	Unit	Boxes/Pallet	m ² /Pallet	m ² /Box	Pieces/Box	Kg/Pallet	Kg/Box
Bohemian / Ronda	29,75x99,55x0,74 cm	m2	44	78,32	1,780	6	1100	24,61
Geneva Lista	1x99,55 cm	pz	15	4,49	0,299	30	70	3,10
Reid Lista	1x99,55 cm	pz	15	15,52	1,035	104	166	10,13
Bohemian Mos. 2,5x2,5	29,75x29,75 cm	pz	36	28,69	0,797	9	361	9,40



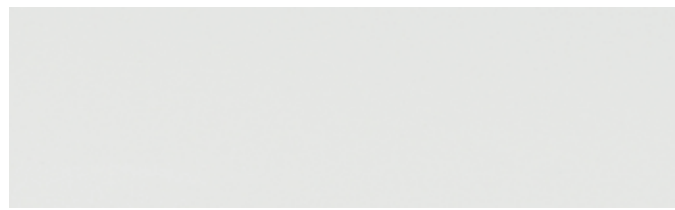
Wall: Bohemian Blend 29,75x99,55 cm Floor: Bohemian Blend Natural 49,75x99,55 cm

WICKER



WICKER

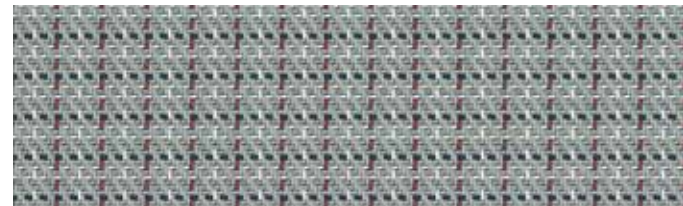
Wall tiles White Body Rectified Double Firing Uniform Appearance Digital 0,75 cm Thickness
 Revestimiento Pasta Blanca Rectificado Bicocción Aspecto Uniforme Digital 0,75 cm Espesor



Albus White
29,75x99,55 cm - 11,71"x39,19" G-592



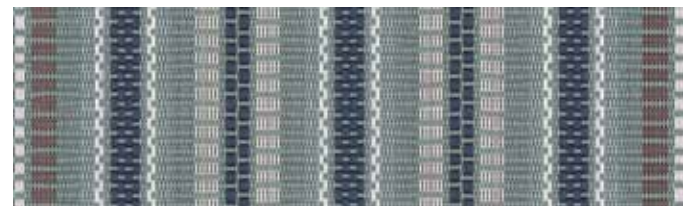
Wicker Beige Spike*
29,75x99,55 cm - 11,71"x39,19" G-599



Wicker Grey Spike*
29,75x99,55 cm - 11,71"x39,19" G-599



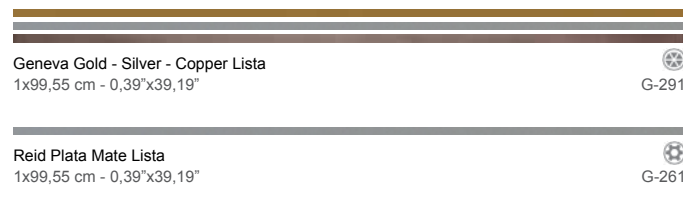
Wicker Beige Keeko
29,75x99,55 cm - 11,71"x39,19" G-599



Wicker Grey Keeko
29,75x99,55 cm - 11,71"x39,19" G-599



Wicker Black Spike*
29,75x99,55 cm - 11,71"x39,19" G-599



Geneva Gold - Silver - Copper Lista
1x99,55 cm - 0,39"x39,19" G-291



Reid Plata Mate Lista
1x99,55 cm - 0,39"x39,19" G-261



Wicker Black Keeko
29,75x99,55 cm - 11,71"x39,19" G-599

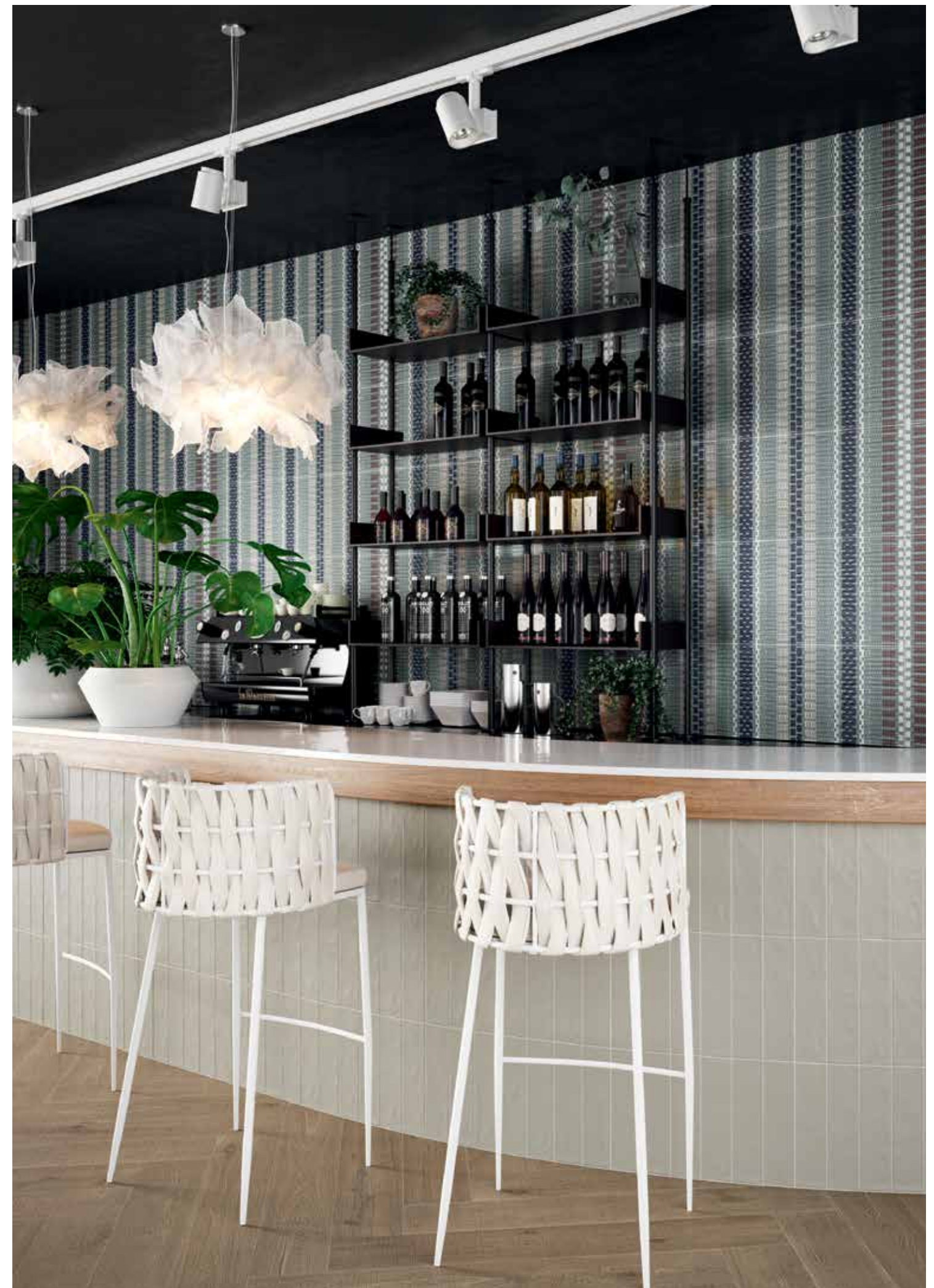
*Relief with a fixed position when installed |
*Relieve con posición en la colocación

Matching floor tiles / Pavimento coordinado



Rainbow Blanco Natural 59,2x59,2 cm - 23,3"x23,3" G-3146
 Rainbow Negro Natural 59,2x59,2 cm - 23,3"x23,3" G-3158
 Norway Natural 16x99,55 cm - 6,3"x39,19" G-3170

Series	Format&Thickness	Unit	Boxes/Pallet	m ² /Pallet	m ² /Box	Pieces/Box	Kg/Pallet	Kg/Box
Albus White	29,75x99,5x0,74 cm	m2	44	78,32	1,780	6	1100	24,61
Wicker Spike - Keeko	29,75x99,5x0,74 cm	m2	44	78,32	1,780	6	1100	24,61
Geneva Lista	1x99,55 cm	pz	15	4,49	0,299	30	70	3,10
Reid Lista	1x99,55 cm	pz	15	15,52	1,035	104	166	10,13



Wall: Wicker Grey Keeko 29,75x99,55 cm-Joliet Grey 7,4x29,75 cm Floor: Norway Walnut Natural 16x99,55 cm

ALTEA 2CM

Porcelain Porcelánico Double Firing Biccocción Rectified Rectificado Slight Variation Ligera Variación Thickness 2CM Espesor 2CM



Altea Puerto Outdoor 2 CM
49,75x99,55 cm - 19,59"x39,19"
G-3234



Altea Alba Outdoor 2 CM
49,75x99,55 cm - 19,59"x39,19"
G-3234



Altea Elda Outdoor 2 CM
49,75x99,55 cm - 19,59"x39,19"
G-3234



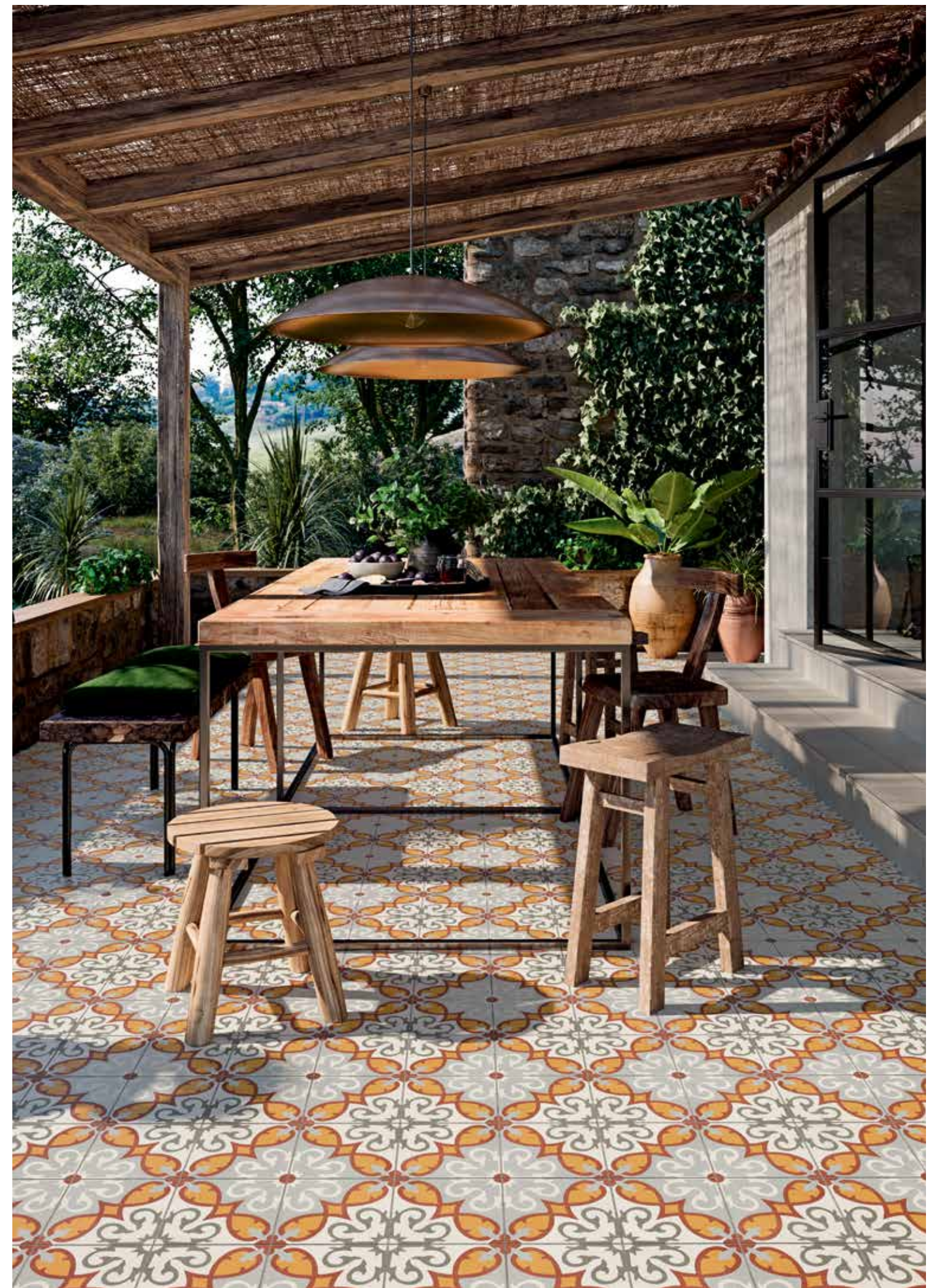
Altea Pinar Outdoor 2 CM
49,75x99,55 cm - 19,59"x39,19"
G-3234



Altea Olivo Outdoor 2 CM
49,75x99,55 cm - 19,59"x39,19"
G-3234



Altea Corbeta Outdoor 2 CM
49,75x99,55 cm - 19,59"x39,19"
G-3234



UNE-ENV 12633

CLASE 3

DIN 51130

R11 A+B+C

ANSI A 137.1-2012

DCOF>0.42

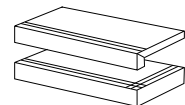
BS 7976

PTV > 36

CONTENT OF RECYCLED MATERIAL
CONTENIDO DE MATERIAL RECICLADO

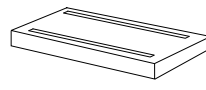
41%

Steps | Peldaños

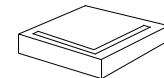


Altea Out. 2 CM Tipo L 100 G-2609
Altea Out. 2 CM Tipo L Ang. G-2815
49,75x99,55 cm - 19,59"x39,19"

Grid | Rejilla



Altea Outdoor 2 CM Grid G-2375
24,75x99,55 cm - 9,74"x39,19"



Altea Outdoor 2 CM Grid G-2171
24,75x24,75cm - 9,74"x9,74"

Series	Format&Thickness	Unit	Boxes/Pallet	m ² /Pallet	m ² /Box	Pieces/Box	Kg/Pallet	Kg/Box
Altea 2 CM	49,75x99,55x2 cm	m ²	36	17,82	0,495	1	883	23,59

Floor: Altea Elda Outdoor 2CM 49,75x99,55 cm-Altea Puerto Outdoor 2CM Tipo L 100-Altea Puerto Natural 59,2x59,2 cm



ECOLOGY

up to 69% recycled content

QUALITY

double fired ceramic and high technical porcelain

INTERNATIONAL

141 countries

SERVICE

permanent stock. delivery within 0,5 days

INNOVATION

and design

PRODUCTION

14.500.000 m²/year

TECHNOLOGY

state-of-the-art production facilities

FLEXIBILITY

2-6 weeks lead time for special orders

Cerámicas Aparici SA does not take any responsibility of printing mistakes in any data of this catalogue. Check and confirm the data with CERÁMICAS APARICI S.A. before any order. All technical characteristics and specifications are based on the available information at the printing moment, they can suffer alterations without warning according to changes in markets, in technological innovations or any other factor. CERÁMICAS APARICI S.A. has the right to modify them without any responsibility or any commitment.

Cerámicas Aparici SA no asume ninguna responsabilidad por errores de impresión en cualquier dato reflejado en el presente catálogo. Por tal motivo, para la realización de cualquier pedido se solicita que sean confirmados a Cerámicas Aparici SA o a su distribuidor. Todas las características y especificaciones técnicas están basadas en la información disponible al momento de la impresión del presente catálogo y podrán cambiar o variar sin previo aviso de acuerdo a las circunstancias del mercado y/o a las innovaciones tecnológicas y/o a cualquier factor. CERÁMICAS APARICI SA, se reserva el derecho a modificarlos en cualquier momento sin incurrir en ninguna obligación, ni responsabilidad.

SYMBOLS / SÍMBOLOS / СИМВОЛЫ

OTHER PRODUCTS / OTROS PRODUCTOS / ДРУГИЕ МАТЕРИАЛЫ



COMPLEMENTS / COMPLEMENTOS / АКЦЕССУАРЫ



FINISHES / ACABADOS / ПОВЕРХНОСТЬ



aparici

Carretera Castellón - Alcora km.12 - 12110 Alcora (Castellón - Spain)
T. +34 964 701 010 E. ceramicas@aparici.com W. www.aparici.com