

INSTALLATION GUIDANCE NOTE: ALLURA FLEX



1



2



3

Photos

1. Before installation the sub floor must be dry, rigid and smooth. Leveling is required when this is not the case.
2. Ascertain the centre of the room by drawing two perpendicular lines on the floor.
3. Place the Flex Design tile or plank on the floor, on top of the tackifier. Please note that there are arrows on the back of Allura flex tiles which identify the recommended installation direction.
4. When approaching the wall draw the required correct size of the tile or plank.

For a well finished floor

1. Make sure all sub floors are in satisfactory condition.
2. Install materials under proper site conditions.
3. Where applicable, use only Forbo approved adhesive.
4. If in any doubt or you require further advice please contact Forbo Flooring Technical Services.



4

Recommended adhesives

The recommended adhesive for Allura flex Loose Lay Tiles is a tackifier - Eurofix Tack Plus 542. Please contact customer services for further information.

Service products

As a total flooring solutions provider, Forbo offers a collection of products to complement the installation, finishing and maintenance of our products. An optimal assortment of adhesives, levelling compounds, primers, subfloors and installation tools can be offered.

Product build up

Allura flex consists of pure functional layers, each designed to perform a functional task, ensuring optimal performance. The core of the product is a glass fleece carrier, giving superior dimensional stability, flexibility, strength and allowing for tension release. A backing with 2 components: a Forbo specific foamed backing for loose lay function and a solid backing with over 50% recycled content for balance, comfort and strength. On top a transparent calendared wear layer delivers superior strength, durability, balance and clear visibility.

Meeting *all* your spec requirements

COMPLIANCE PLUS

Allura flex is produced in Europe, where our quality and environmental management systems are certified in accordance with ISO 9001 and 14001. All products are available from stock. This product is compliant with current and known future REACH legislation. The products' emission complies with the highest regulation standards.



DIMENSIONALLY STABLE CONSTRUCTION

The specific construction of Allura flex offers durability throughout the product's lifetime. The combination of a glass fleece carrier and multiple calandered layers makes it unprecedented in strength, performance and dimensional stability. Every part of the construction contributes to the final performance.

EASY LOOSE LAY

Allura flex is ideal for use in renovation projects, raised access floors or any project where speed of installation is required in permanent or temporary locations. As such the Allura flex loose lay tile collection is ideal for offices, retail and many more application areas and perfectly complements our carpet tile ranges.

Allura flex is a collection of high quality, dimensionally stable, heterogeneous vinyl tiles and planks which are adhered with tackifier rather than permanent adhesive. Available in 36 designs ranging from natural stones and woods to interesting metallic and textured effects, the collection offers something for all commercial floors. Ideal for use alongside carpet tiles, Allura flex has a gauge of 5mm with a 1mm transparent wear layer and proven PUR Pearl® finish.

High quality

The product has a 1 mm transparent wear layer which, in combination with the unique PUR Pearl© finish, gives durable protection and high stain resistance. It reduces the need for water, detergent and energy in the cleaning process, which means maintenance is easy and low cost. Quick and easy to install, simply using tackifier saves time, cost and in all cases delivers a perfect result. Allura flex also offers excellent sustainability credentials as its REACH compliant, contains 22% recycled content and can be recycled at the end of life.

Allura Flex is:

- High quality
- Quick and easy to loose lay (with tackifier)
- Original in design
- Strong and stable
- Fully EU REACH compliant



Design concept

The design concept of the collection has been developed by our experienced international design team. Providing abstract, contemporary and more traditional wood and stone designs, Allura flex provides the scope to create attractive and unique interiors. The wood designs are an authentic plank format (20 x 100 cm and 20 x 120 cm) and the tiles can be installed in such a way to achieve the desired decorative effect (50 x 50 cm and 50 x 75 cm). The natural design effect is enhanced with the PUR Pearl® finish which ensures an authentic matt surface that is also easy to maintain.

Please visit www.forbo-flooring.com to find our recommended installation method. Allura flex also complements many of our Tessera and Westbond carpet tile ranges as its installed on the same tackifier and does not normally require a transition strip.



Technical specifications

Allura flex meets the requirements of EN-ISO 10581 - Type 1

	Total thickness	EN-ISO 24346	5.00 mm
	Thickness of wearlayer	EN-ISO 24340	1.00 mm
	Collection size		36
	Commercial very heavy	EN-ISO 10874	Class 34
	Light industrial general	EN-ISO 10874	Class 43
	Tile size	EN-ISO 24342	50 x 50 cm 75 x 50 cm
	Plank size	EN-ISO 24342	100 x 20 cm 120 x 20 cm
	Squareness and straightness	EN-ISO 24342	≤ 400 mm: ≤ 0.25 mm ≥ 400 mm: ≤ 0.35 mm
	Total weight	EN-ISO 23997	ca. 6550 gr/m²
	Packaging per carton: tiles		50 x 50: 2.5 m² = 10 pcs 75 x 50: 2.25 m² = 6 pcs
	Packaging per carton: planks		100 x 20: 2.0 m² = 10 pcs 120 x 20: 2.4 m² = 10 pcs
	Slip resistance	DIN 51130	R10
	Acoustical impact noise reduction	EN ISO 717-2	14 dB
	Castor chair continuous use	EN 425	No effect
	Indentation-residual	ISO 24343-1 / EN 433	≤ 0.12 mm
	Light fastness	EN-ISO 105-B02	≥ 6
	Resistance to chemicals	EN-ISO 26987	Very good
	Dimensional stability	EN-ISO 23999	≤ 0.02%
	Heat resistant	EN 12664	0.02 m² K/W
	Heat dissipation	DIN 52614	W1:37 / W10: 230

Allura flex meets the requirements of EN 14041

EN 14041
CE
0200123_DOP_306

	Reaction to fire	EN 13501-1	B _g S1
	Slipresistance	EN 13893	DS: ≥ 0.3
	Thermal conductivity	EN 12524	0.25 W (m.K)
	Body voltage	EN 1815	< 2.0 kV

The quality and environmental management system of Forbo-Novilon B.V. (NL), where Flex design is manufactured is certified in accordance with ISO 9001 and ISO 14001



Baltic States

Forbo Flooring
K. Ulmana gatve 5
Riga, LV-1004, Latvia
Tel.: +371 670 66 116
Fax: +371 670 66 117
E-mail: info.lv@forbo.com
www.forbo-flooring.lv
www.forbo-flooring-ee.com
www.forbo-flooring.lt

Ireland

Forbo Ireland Ltd.
2 Deansgrange Business Park
Blackrock
Co Dublin
Tel: 00531 1 2898 898
Fax: 00353 1 2898 177
info.ireland@forbo.com
www.forbo-flooring.ie

Other countries

Forbo Flooring B.V.
P.O. Box 13
1560 AA Krommenie
The Netherlands
Tel.: +31 75 647 74 77
Fax.: +31 75 647 77 01
E-mail: contact@forbo.com
www.forbo-flooring.com

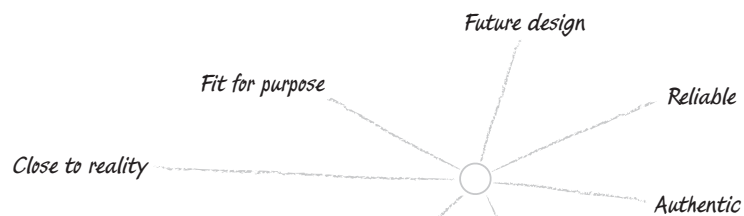
Hong Kong & Macau

Flooring Systems
Forbo Flooring
E-mail: info.flooring.hk@forbo.com
www.forbo-flooring.com

**Serbia, Croatia, Bulgaria,
Bosnia and Herzegovina,
Slovenia, Macedonia,
Montenegro, Albania**

Mobile: + 381 63 617 716
Email: info.flooring.see@forbo.com



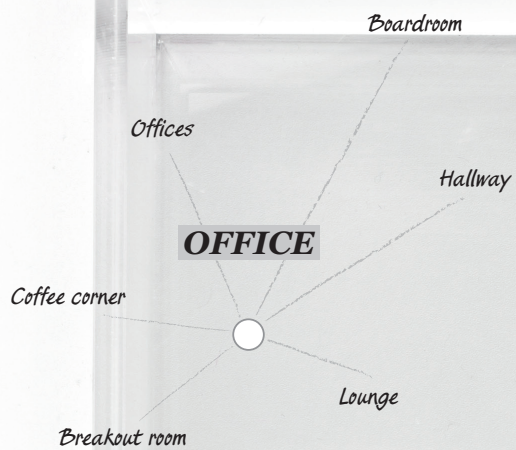


allura flex

loose lay vinyl tiles

creating better environments

Forbo
FLOORING SYSTEMS



CONVENIENCE AND STYLE

Allura flex loose lay tiles and planks are the ultimate LVT. High quality, dimensionally stable, heterogeneous vinyl tiles that have been specifically designed for loose lay installation. The combination of a glass fleece carrier and multiple calandered layers makes Allura Flex unprecedented in strength, performance and quality. Beautiful designs in wood, stone and abstracts that are easy to install, resulting in stunning and solid floors.



MAKE A
DIFFERENCE
IN ONE NIGHT



1646 | 100 x 20 cm



1647 | 100 x 20 cm



1644 | 100 x 20 cm



1641 | 100 x 20 cm



1642 | 100 x 20 cm



1684 | 120 x 20 cm



1556 | 120 x 20 cm



1557 | 120 x 20 cm



1679 | 120 x 20 cm



1564 | 120 x 20 cm



1678 | 120 x 20 cm



1604 | 120 x 20 cm



1682 | 120 x 20 cm



1681 | 120 x 20 cm





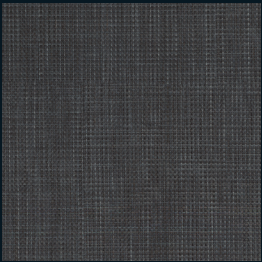
1578 | 75 x 50 cm



1524 | 75 x 50 cm



1586 | 50 x 50 cm



1589 | 50 x 50 cm



1584 | 50 x 50 cm

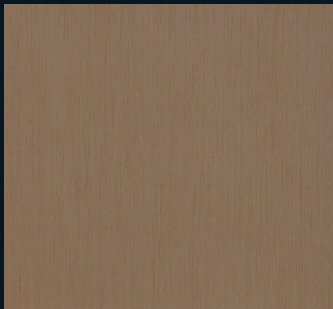




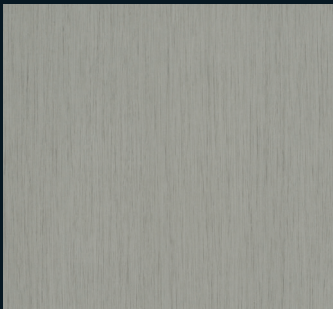
1517 | 75 x 50 cm



1516 | 75 x 50 cm



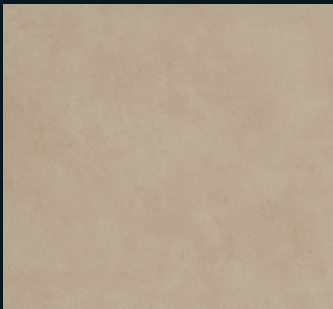
1592 | 50 x 50 cm



1590 | 50 x 50 cm



1656 | 50 x 50 cm



1505 | 50 x 50 cm



1636 | 50 x 50 cm



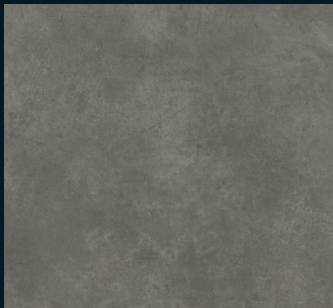
1509 | 50 x 50 cm



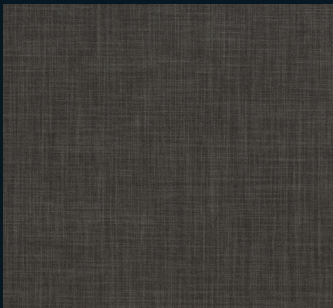
1633 | 50 x 50 cm



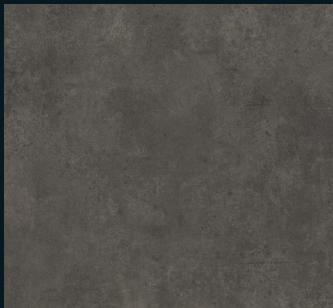
1508 | 50 x 50 cm



1632 | 50 x 50 cm



1664 | 50 x 50 cm



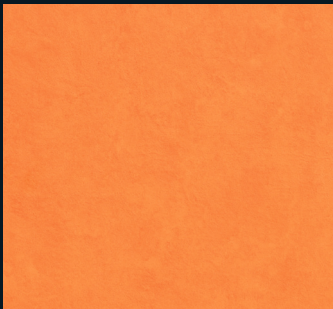
1634 | 50 x 50 cm



1544 | 50 x 50 cm



1543 | 50 x 50 cm



1541 | 50 x 50 cm



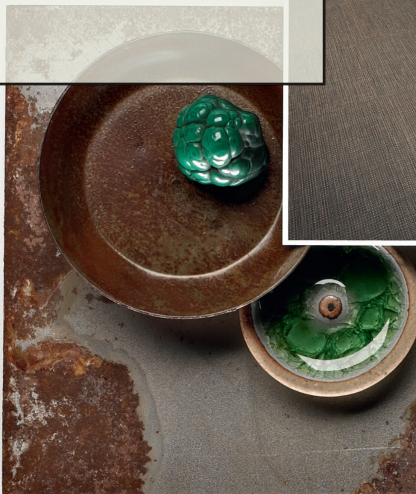
1542 | 50 x 50 cm



1544 | 50 x 50 cm

OFFICE & RETAIL

Allura Flex is ideal for use in renovation projects, raised access floors or any project where speed of installation is required in permanent or temporary locations. As such the Allura Flex loose lay tile collection is ideal for offices, retail and many more application areas and perfectly complements our carpet tile ranges. A simple tackifier keeps the floor tiles in position and makes them easy to replace or remove whenever required.



Walk ways

Pharmacy

Clothing

RETAIL

Boutique

Perfumes

Beauty

Bookstore

EASY INSTALLATION
and combination