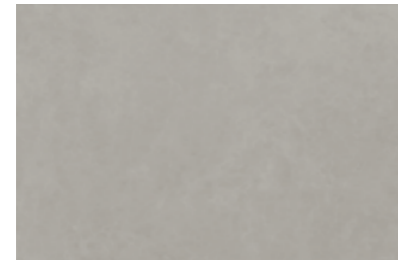




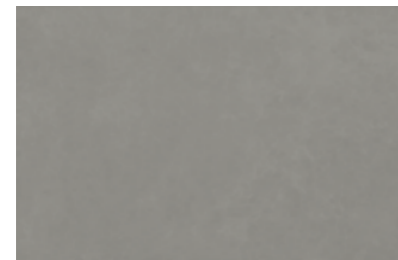
R3TQ Casablanca Grigio 25x38
R3TR Casablanca Antracite 25x38
R3VQ Casablanca Mosaico Grigio 25x38
R3XC Casablanca Decoro Grigio / Antracite 25x38
R3LE Casablanca Antracite 45x45



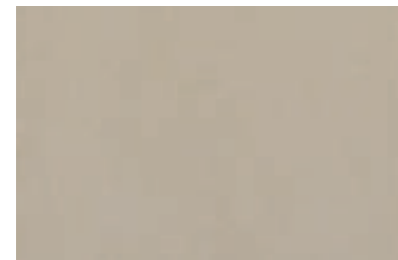
R3XP Casablanca Bianco
25x38



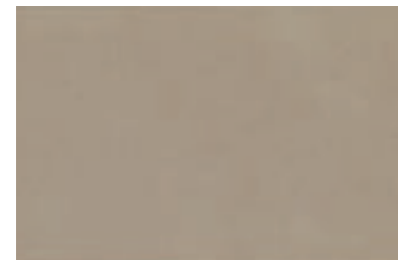
R3TQ Casablanca Grigio
25x38



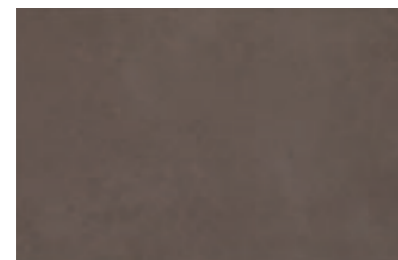
R3TR Casablanca Antracite
25x38



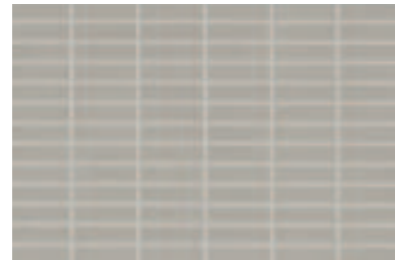
R3TM Casablanca Beige
25x38



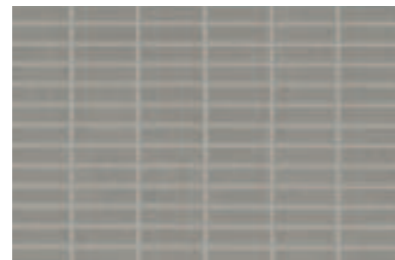
R3TN Casablanca Creta
25x38



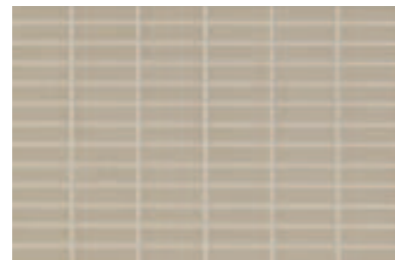
R3TP Casablanca Marrone
25x38



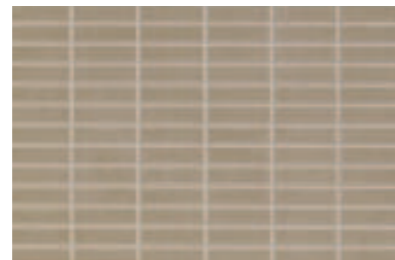
R3VQ Casablanca Mosaico Grigio
25x38



R3VR Casablanca Mosaico Antracite
25x38



R3VM Casablanca Mosaico Beige
25x38



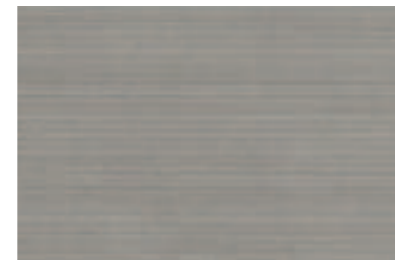
R3VN Casablanca Mosaico Creta
25x38



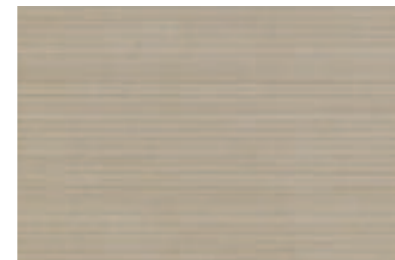
R3VP Casablanca Mosaico Marrone
25x38



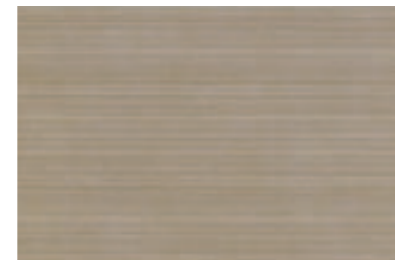
R3WZ Casablanca Decoro Grigio
25x38



R3WY Casablanca Decoro Antracite
25x38



R3WV Casablanca Decoro Beige
25x38



R3WW Casablanca Decoro Creta
25x38



R3WX Casablanca Decoro Marrone
25x38

Abbinabile ai fondi / Matching with colours / Mit den Grundfliesen kombinierbar / Peut s'associer aux carreaux de base de couleurs / Puede combinarse con los fondos / Сочетается с фоновой плиткой:

Beige, Creta, Marrone



R3XA Casablanca Decoro Marrone
25x38



R3XD Casablanca Decoro Beige
25x38



R3WT Casablanca L. Beige
4,5x38

Abbinabile ai fondi / Matching with colours / Mit den Grundfliesen kombinierbar / Peut s'associer aux carreaux de base de couleurs / Puede combinarse con los fondos / Сочетается с фоновой плиткой:

Grigio, Antracite



R3XC Casablanca Decoro Antracite
25x38



R3WU Casablanca L. Grigio
4,5x38

pavimenti coordinati / coordinated floor tiles / koordinierte bodenfliesen / sols coordonnés / pavimentos coordinados / координированные полы

| | | | | | | |
|-------------------------|--------|--------|-----------|-------|-------|---------|
| CASABLANCA 25x38 | | | | | | |
| | Bianco | Grigio | Antracite | Beige | Crema | Marrone |
| CASABLANCA (pag. 66) | | | | | | |
| | GR | AN | GR | AN | BG | CR |

tech info



Mosaico preinciso da stuccare
Pre-cut mosaic, requires grouting
Mit Fugen zu verlegendes, vorgeschchnittenes Mosaik
Mosaïque pré-coupée à jointoyer
Mosaico pregrabado que hay que estucar
Мозаика с насечкой для затирки



Ragno è un brand di Marazzi Group S.r.l. che è membro del Green Building Council Italia, associazione che promuove la cultura dell'edilizia sostenibile energeticamente efficiente, rispettosa dell'ambiente contribuendo a migliorare la qualità della vita dei cittadini attraverso lo standard di certificazione Leed®.

Casablanca grazie al contenuto di materiale riciclato contribuisce al raggiungimento dei crediti LEED / Thanks to its recycled material content, Casablanca is eligible for LEED credits / Casablanca trägt durch seinen hohen Recyclinganteil zur Zuerkennung der LEED®-Punkte / Avec son contenu recyclé, Casablanca permet d'obtenir les crédits LEED / Gracias a contener material reciclado, Casablanca contribuye a la consecución de los créditos LEED / Благодаря содержанию повторно использованного материала коллекция Casablanca помогает набрать кредиты LEED

imballi / packaging / verpackungen / emballages / embalajes / упаковки

Scatole / Box / Karton /
Boite / Caja / Коробки

Pallet / Pallet / Palette /
Palette / Pallet / Поддон

| | | | | | | |
|--|----------------------|-----------|--|----------------------|-----------|----------------|
| | M² | KG | | M² | KG | ≠ mm |
|--|----------------------|-----------|--|----------------------|-----------|----------------|

fondi / plain tiles / grundfliesen / fonds / fondos / фоновая плитка

| | | | | | | | |
|---------------|----|------|-------|----|-------|---------|-----|
| 25x38 | 14 | 1,33 | 19,40 | 54 | 71,82 | 1047,86 | 8,5 |
| 25x38 mosaico | 13 | 1,24 | 18,02 | 54 | 66,69 | 973,01 | 9 |

decori / decorative pieces / dekore / décors / decoraciones / декоры

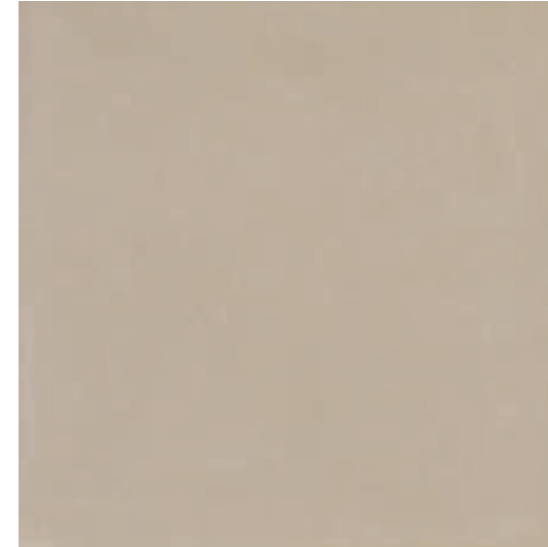
| | | | | | | | |
|---------------------------|----|------|-------|----|-------|---------|-----|
| 25x38 decoro | 14 | 1,33 | 19,40 | 54 | 71,82 | 1047,86 | 8,5 |
| 25x38 dec. R3XA/R3XC/R3XD | 4 | 0,38 | 5,48 | | | | |
| 4,5x38 L. | 6 | 0,10 | 1,48 | | | | |

Casablanca

60x60 30x60 45x45



R3KM Casablanca BG rettificato 60x60



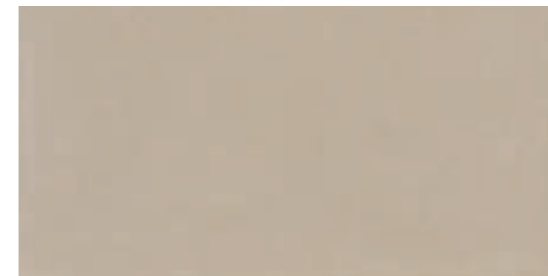
R3KM Casablanca BG rettificato
60x60

R3KZ Casablanca BG
45x45

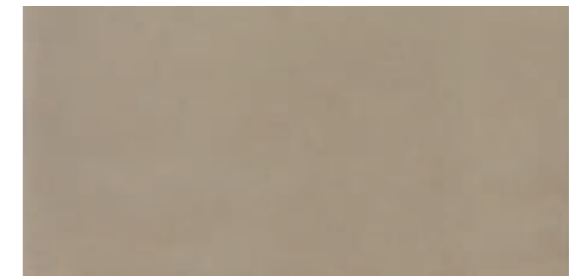


R3KN Casablanca CR rettificato
60x60

R3LA Casablanca CR
45x45



R3KT Casablanca BG rettificato
30x60



R3KU Casablanca CR rettificato
30x60



F

R3KP Casablanca MA rettificato
60x60

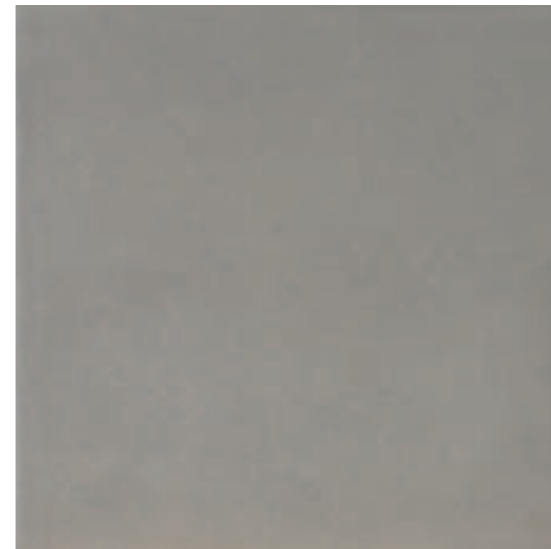
R3LC Casablanca MA
45x45



G

R3KQ Casablanca GR rettificato
60x60

R3LD Casablanca GR
45x45



G

R3KR Casablanca AN rettificato
60x60

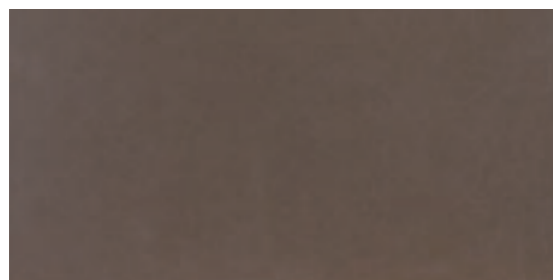
R3LE Casablanca AN
45x45



F

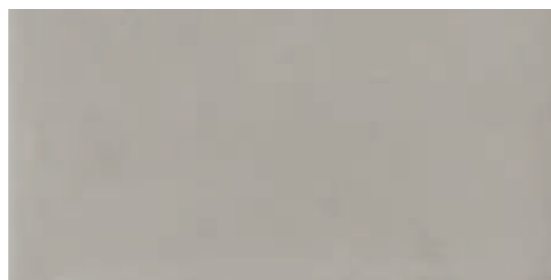
R3KS Casablanca NE rettificato
60x60

R3LF Casablanca NE
45x45



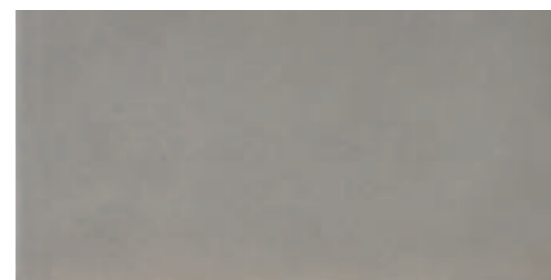
F

R3KV Casablanca MA rettificato
30x60



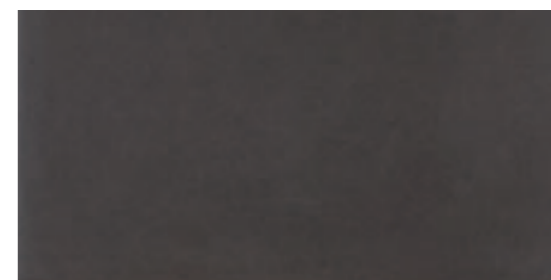
G

R3KW Casablanca GR rettificato
30x60



G

R3KX Casablanca AN rettificato
30x60



F

R3KY Casablanca NE rettificato
30x60

tech info

★

Battiscopa ottenuto da taglio del fondo
Skirting cut from plain tile
Aus Grundfliese geschnittener Sockel
Plinthe obtenue par découpe du fond
Rodapié obtenido mediante corte del fondo
Плинтус, полученный методом нарезания фоновой плитки

★★

Battiscopa ottenuto per pressatura
Pressed skirting tile
Gepresster Sockel
Plinthe obtenue par pressage
Rodapié obtenido mediante prensado
Плинтус, полученный в результате прессовки



Vedi Appendice pag. 121
See Appendix page 121
Siehe Anhang S. 121
Voir Annexe page 121
Véase la pág. 121 del Apéndice
Смотри приложение на стр. 121



Ragno è un brand di Marazzi Group S.r.l. che è membro del Green Building Council Italia, associazione che promuove la cultura dell'edilizia sostenibile energeticamente efficiente, rispettosa dell'ambiente contribuendo a migliorare la qualità della vita dei cittadini attraverso lo standard di certificazione Leed®.

Casablanca grazie al contenuto di materiale riciclato contribuisce al raggiungimento dei crediti LEED / Thanks to its recycled material content, Casablanca is eligible for LEED credits / Casablanca trägt durch seinen hohen Recyclinganteil zur Zuerkennung der LEED®-Punkte / Avec son contenu recyclé, Casablanca permet d'obtenir les crédits LEED / Gracias a contener material reciclado, Casablanca contribuye a la consecución de los créditos LEED / Благодаря содержанию повторно использованного материала коллекция Casablanca помогает набрать кредиты LEED

pezzi speciali / trims / spezialteile / pièces spéciales / piezas especiales / специальные изделия



| | | |
|---------------|------|------|
| Casablanca BG | R3LN | R3LG |
| Casablanca CR | R3LP | R3LH |
| Casablanca MA | R3LQ | R3LJ |
| Casablanca GR | R3LR | R3LK |
| Casablanca AN | R3LS | R3LL |
| Casablanca NE | R3LT | R3LM |

imballi / packaging / verpackungen / emballages / embalajes / упаковки

| Scatole / Box / Karton / Boite / Caja / Коробки | Pallet / Pallet / Palette / Palette / Поддон | mm |
|---|--|----|
| M ² | KG | |
| M ² | KG | |

| fondi / plain tiles / grundfliesen / fonds / fondos / фоновая плитка | | | | | | |
|--|---|------|-------|----|-------|--------|
| 60x60 | 3 | 1,08 | 23,00 | 40 | 43,20 | 920,00 |
| 30x60 | 6 | 1,08 | 19,55 | 48 | 51,84 | 938,45 |
| 45x45 | 5 | 1,01 | 19,58 | 33 | 33,41 | 646,27 |

| pezzi speciali / trims / spezialteile / pièces spéciales / piezas especiales / специальные изделия | | | | | | |
|--|---------|----|----------|-------|--|---|
| 7x60 | BT.B.C. | 16 | 9,60 | 16,00 | | 9 |
| 8x45 | BT.B.C. | 30 | 13,50 ml | 18,57 | | 9 |