

Forbo Flooring Systems is part of the Forbo Group, a global leader in flooring, bonding and movement systems, and offers a full range of flooring products for both commercial and residential markets. High quality linoleum, vinyl, textile, flocked and entrance flooring products combine functionality, colour and design, offering you total flooring solutions for any environment.



OMA Architecture

Australia

Forbo Floorcoverings Pty Ltd.
23 Ormsby Place
Wetherill Park
NSW 2164
T +61 2 9828 0200
F +61 2 9725 3456
info.au@forbo.com
www.forbo-flooring.com.au

Baltic States

Forbo Flooring
K. Ulmana gatve 5
Riga, LV-1004, Latvia
Tel.: +371 670 66 116
Fax: +371 670 66 117
E-mail: info.lv@forbo.com
www.forbo-flooring.com

China

Forbo Flooring China
6 Floor, Ansheng Business Center
No. 77 Fenyang Road
Shanghai 200031
P. R. China
Tel: 0086 21 6473 4586
Fax: 0086 21 6473 4757
E-mail: info.cn@forbo.com
www.forbo-flooring.com.cn

Hungary, Romania, Bulgaria

Forbo Flooring B.V. Hungarian Sales
Representative Office
125 Erzsébet királyné útja
1142 Budapest
Tel.: +36 1 7858 073
Fax: +36 1 789 0636
info.hungary@forbo.com
www.forbo-flooring.hu

Korea

Forbo Flooring Korea
#207 Koryo B/D
88-7 Nonhyun-dong
Kangnam-gu, 135-818
Seoul, Korea
Tel.: 82 2 3443 0644
Fax: 82 2 3443 0284
E-mail: info@forbo.co.kr
www.forbo.co.kr

Middle East/Turkey/Maghreb AfricaFrench Overseas Territories/Greece

Forbo Flooring Systems
63, rue Gosset – BP 2717
51100 REIMS Cedex
France
Tél. 00 333 26 77 35 00
Fax 00 333 26 07 18 93
info-produits@forbo.com
www.forbo-flooring.com

New Zealand

Forbo Flooring Systems
PO BOX 230 265
Botany 2163 Auckland
T +64 0800 000 563
F +64 0800 000 634
info.nz@forbo.com
www.forbo-flooring.co.nz

Other countries

Forbo Flooring B.V.
P.O. Box 13
1560 AA Krommenie
The Netherlands
Tel.: +31 75 647 74 77
Fax: +31 75 647 77 01
E-mail: contact@forbo.com
www.forbo-flooring.com



Serbia, Croatia, Bosnia and Herzegovina, Slovenia, Macedonia, Montenegro, Albania

Mobile: + 381 63 617 716
Email: boris.akerman@forbo.com

South East Asia

Forbo Flooring 190 Middle Road, #19-05
Fortune Centre
Singapore 188979
Singapore
Tel.: + 65 6852 9805
Fax: + 65 6759 9212
E-mail: leo.tan@forbo.com
www.forbo-flooring.com

Taiwan/Hong Kong/Macau

Forbo Flooring
Tel: +852 9039 0708
E-mail: info.flooring.tw@forbo.com
www.forbo-flooring.com

project vinyl

eternal



FLOORING SYSTEMS

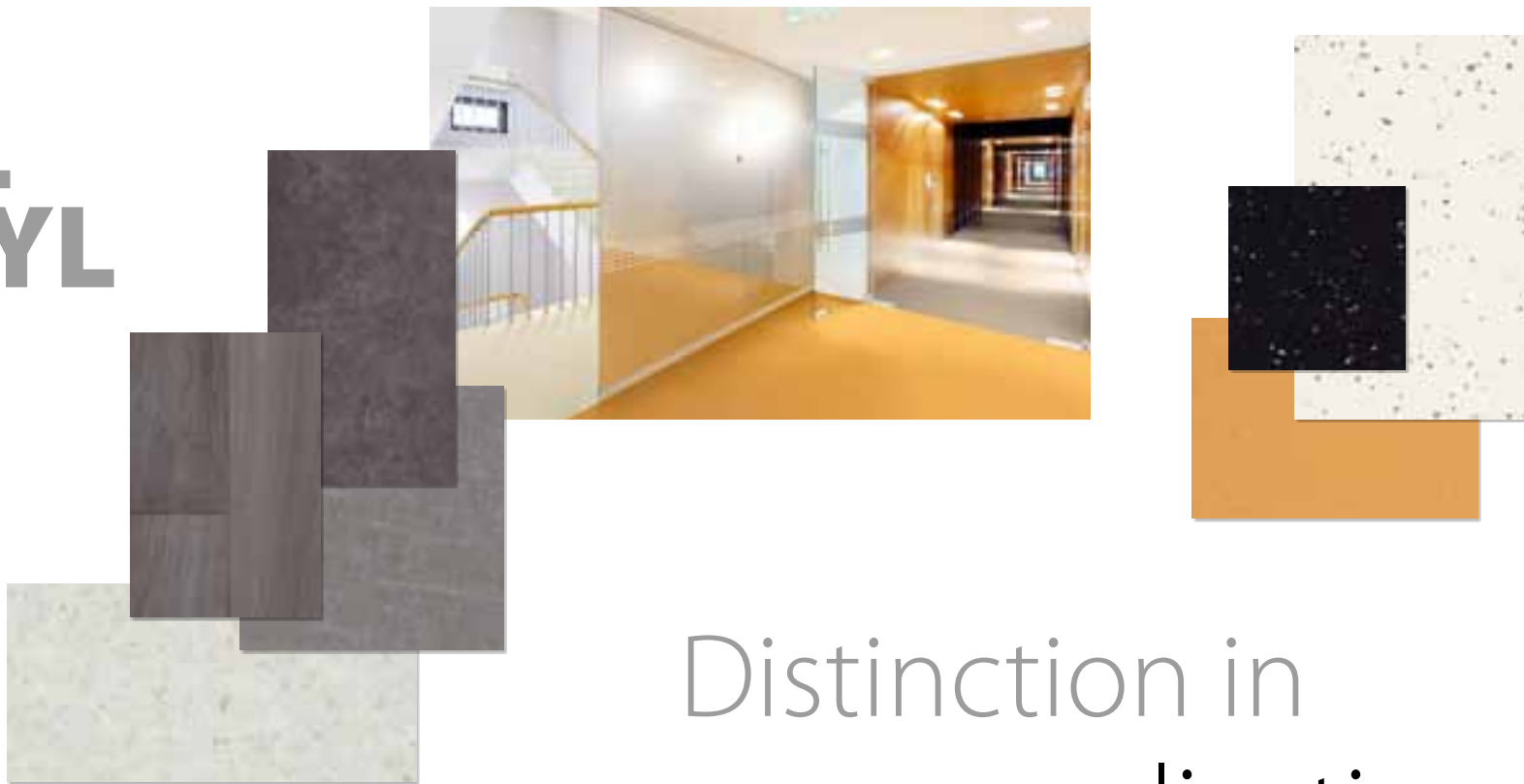
creating better environments



FLOORING SYSTEMS

creating better environments

THE ETERNAL PROJECT VINYL COLLECTION; BALANCE IN MOTION



Distinction in every application

More than ever before, when you turn to the new Forbo Eternal general purpose vinyl collection you'll discover a superb combination of state of the art designs in a strong, durable, fit-for-purpose range – whatever your application.

The collection presents a balanced range of wood-, stone- and abstract designs, alongside with a comprehensive, modern colour palette that complements your interior design. When you're looking for a flooring solution in health- or age-care, education facilities, offices or retail environments, you will find a match with our Eternal collection. Whether you're an architect or interior designer, looking for good designs, or whether you are a facility manager or contractor looking for a functional solution, the Eternal collection marks the decision point of your search.

Authenticity
For the new Eternal collection, Forbo's design team has developed convincing, authentic visuals with a unique identity and a natural feel – plus added value. Eternal's high tech wear layer is key to the collection's long term appearance retention capability. Even after many years of intensive use, the Forbo Flooring general purpose vinyl collection will still look good.

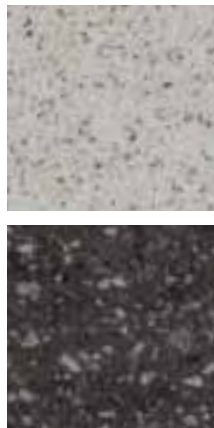
A well known brand
The Forbo Flooring Eternal brand has become synonymous with assured quality. The brand's benefits are easy to see and clearly recognizable – which is why you can spot it in many installations worldwide. Quite simply, Eternal is chosen for its trustworthy performance and broad range of designs and colours.

Balance in action
Extraordinary design and performance; you'll find the promise fulfilled in every detail of the collection:

- Functionality goes hand in hand with visual attraction
- Wide colour ranges, from soft tones to accent colours – and everything in between
- Outstanding performance in every way
- Accessible design that's easy to apply
- Combines well and adapts to the surrounding materials

Contents:

3	Introduction	18	Eternal sand
4	Collection benefits	20	Eternal weave
6	Eternal wood	22	Eternal metal
10	Eternal concrete	24	Eternal palette
12	Eternal stone	28	Eternal contrast
13	Eternal slate	30	Product characteristics
14	Eternal smaragd	32	Forbo Flooring Collections
16	Eternal marble	34	Forbo FloorCare method
		35	Technical specifications



Designer quality for quality sheet vinyl

Turn to the Eternal collection and you benefit from far more than simply the ability to 'pick and choose' from a number of designs.

The Eternal visuals and colours are true originals, created in a process that begins with intensive trend and market studies, and includes requirements dictated by its applications. Colour choice is individually determined, based on the visual characteristics.

The authentic designs display the material in its true shape with depth and a three dimensional effect. This results in attractive flooring with a natural feel. The 'scattered' look featured in Eternal Palette, Eternal Contrast, Eternal Stone and Eternal Smaragd makes these designs naturally suitable for any scale of application.

Extensive range

Opt for the new Eternal collection and you'll discover visuals and structures designed specifically to help you to match your needs

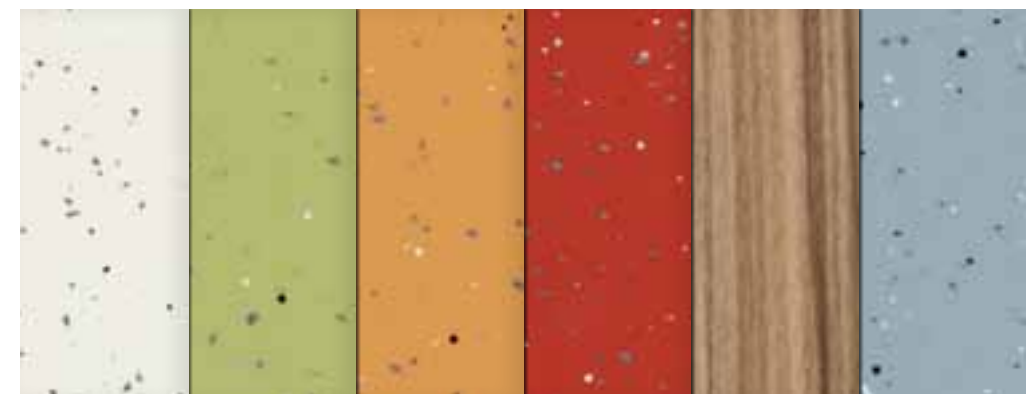
exactly The collection introduces an even wider wood range than previously featured; 20 items ranging from traditional to modern woods. The Eternal Stone collections have been extended, adding visual treatments including concrete and slate to existing marble and smaragd designs. New in the collection are textile, sand and metal designs, and finally the range is complemented by a spectacular array of trend colours.

In short, this new Eternal collection mixes realistic and contemporary designs to offer its own unique pattern and colour signature.

Balance wherever you want it

Education

A classroom in essence is an environment for inspiration, concentration and interaction. A balanced mind is beneficial for both students and teachers. The Eternal collection allows you to fully meet this need.



Healthcare

The healing environment needs an appealing flooring that adapts to the surroundings. The curing and caring elements of healthcare application were kept in mind during the design process. The PUR Pearl, easy cleanable, low maintenance surface of Eternal, fits the demanding cleaning regime essential in this segment.



Retail, leisure and hospitality

All of these benefit from a flooring solution with an identity. But the floor should not be too intrusive, since the surroundings as a whole need to communicate with the visitor. However, the floor can also be used to communicate the messages you want to bring across, whether your own corporate identity or zoning within the location.



Offices

Today there are more offices with a homely feel, to create equilibrium between thinking and inspiration. The Eternal range excels in helping you to achieve this. By mixing and matching this Eternal collection it enables you to create a balanced zoning with functional and aesthetic flooring designs.

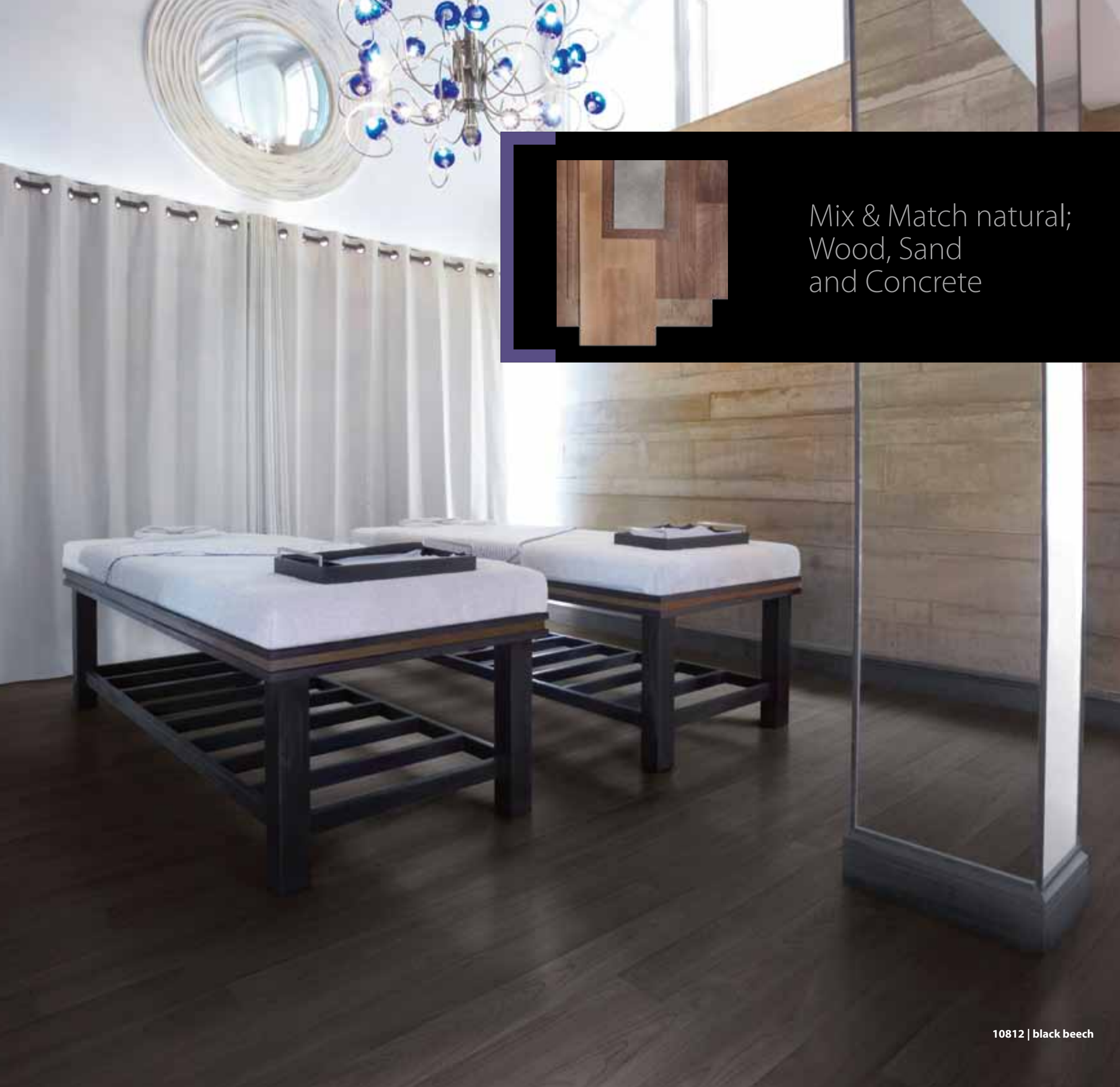


eternal wood

- A group of basic traditional wood types in realistic colours with smooth graining, in medium and small size planks.
- Wood types with a natural character like Oak and Pine, with medium to wide planks.
- Rustic oak and warm chestnut with an embossed authentic wood surface.
- Contemporary wood types with a modern appearance, in fresh light and intense dark colours.
- Abstract wood types with an all-over design without grouts.



10362 | warm chestnut



eternal wood



Mix & Match natural;
Wood, Sand
and Concrete



10542 | grey oak



10252 | white birch



10732 | neutral wengé



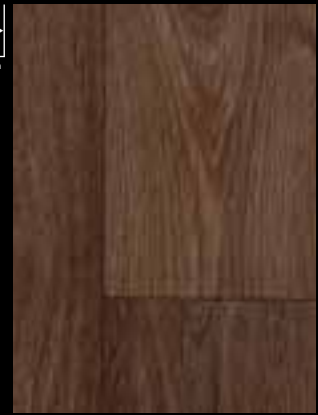
11382 | anthracite stripe



11732 | warm zebrano



10382 | silver chestnut



11882 | smoked oak

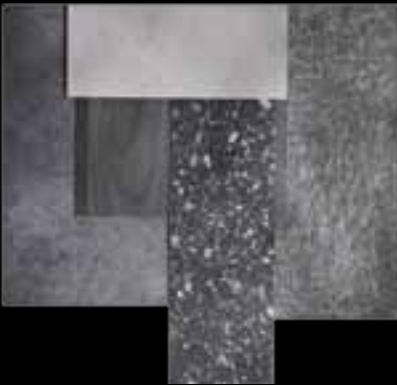


10812 | black beech

10812 | black beech

eternal concrete

A contemporary concrete, with a subtle satin look in 4 natural warm and 4 neutral grey tones.



Mix & Match industrial;
Metal, Concrete and Wood



13022 | beton

10



13012 | neutral



13022 | beton



13082 | gravel



13032 | anthracite



13072 | umber



13062 | silt



13052 | mud



13042 | dune

11

eternal stone

An authentic stone look with colours inspired by natural stones, from warm to cool, light to dark. A fine sparkle in the wear-layer gives this design depth and a natural shine.



12022 | chalk



12042 | granite



12262 | mineral



12292 | pebble



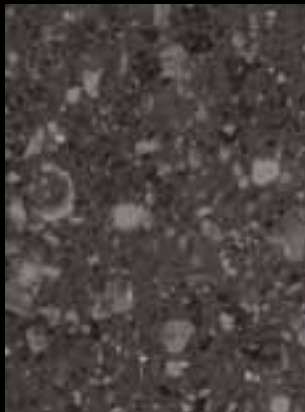
12272 | cobble



12012 | quartz



12282 | flint



12032 | coal



12042 | granite

eternal slate

A genuine slate look in pattern and surface realised by the lively slate embossing, in 3 dark true to nature colours.



13582 | silver



13572 | navy



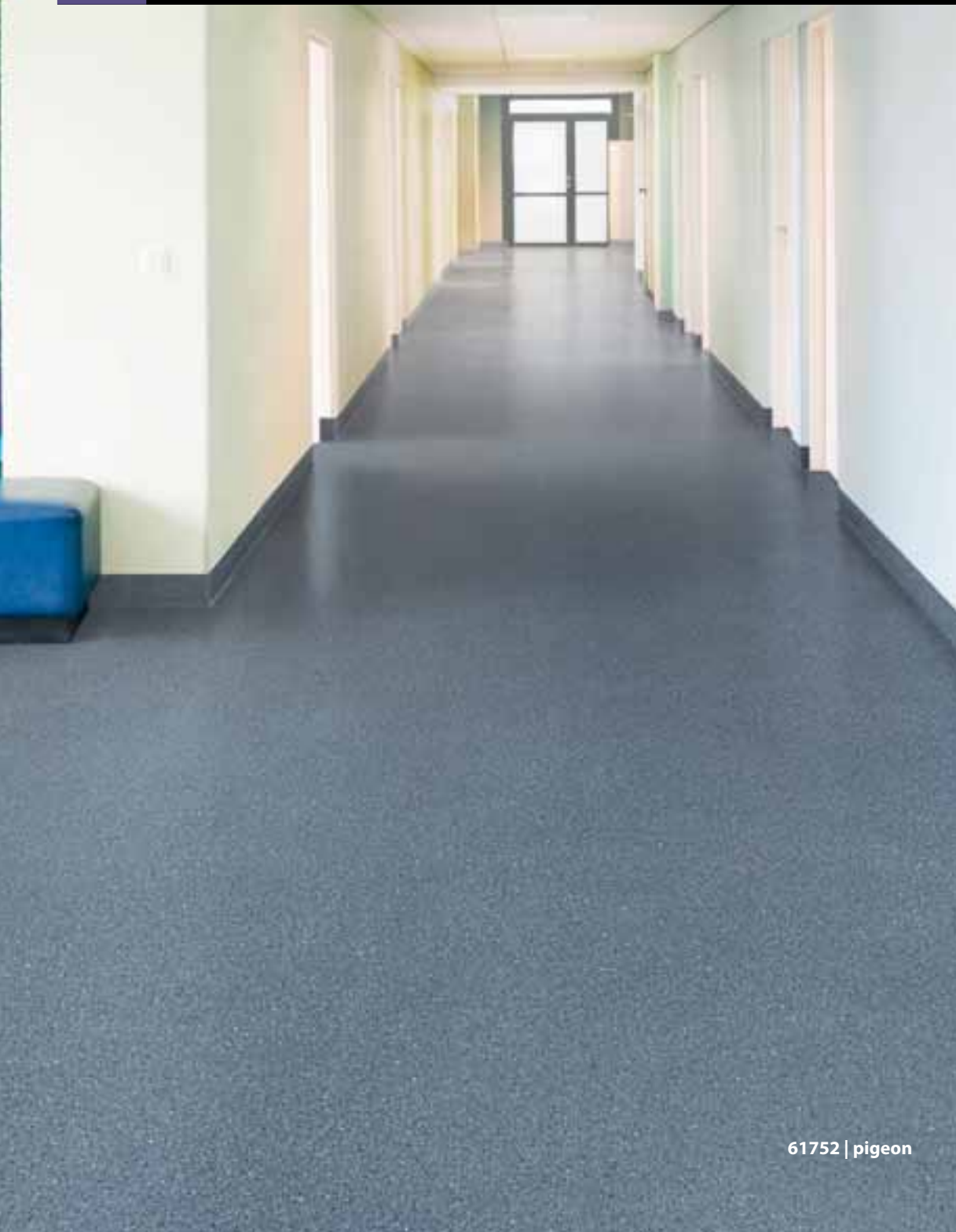
13562 | black



13582 | silver

eternal smaragd

- The timeless, accessible, granite all-over look of smaragd in a basic, neutral, easy to combine range of 12 colours.
- Dirthiding visuals assuring appearance retention of the floor.



61752 | pigeon

Wood, Stone,
Slate and Smaragd



61012 | cream



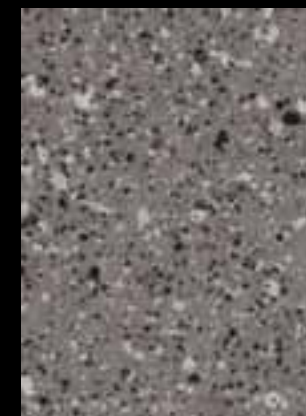
61042 | mist



61512 | rose



66142 | dust



61962 | grey



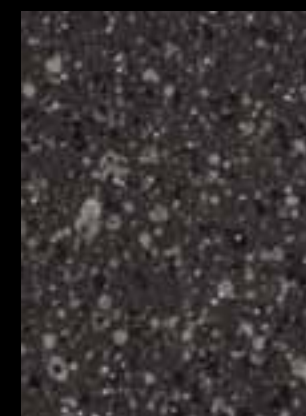
61922 | frost



61832 | herb



61302 | ochre



61032 | nero



61752 | pigeon



61222 | greige



61342 | peach

eternal marble



A neutral marble-inspired design adding appeal to the surroundings in a practical way, in 8 matching colours.



64002 | feather



64032 | cloud



64122 | sahara



64822 | moss



64092 | leather



64932 | dove



64362 | camel



64972 | ash



64122 | sahara



eternal sand

A subtle all-over design with a natural look in 8 stylish colours, with a matching smooth pearly finish.



Mix & Match Elegant;
Wood, Weave
and Sand

13862 | teal



13822 | smoke



13842 | cork



13852 | soil



13872 | terra



13892 | aubergine



13882 | sepia



13862 | teal



13832 | linen

eternal weave

A soft textured, true to nature textile look with depth,
in muted colours with a satin finish.



13662 | indigo



13622 | graphite



13652 | iron

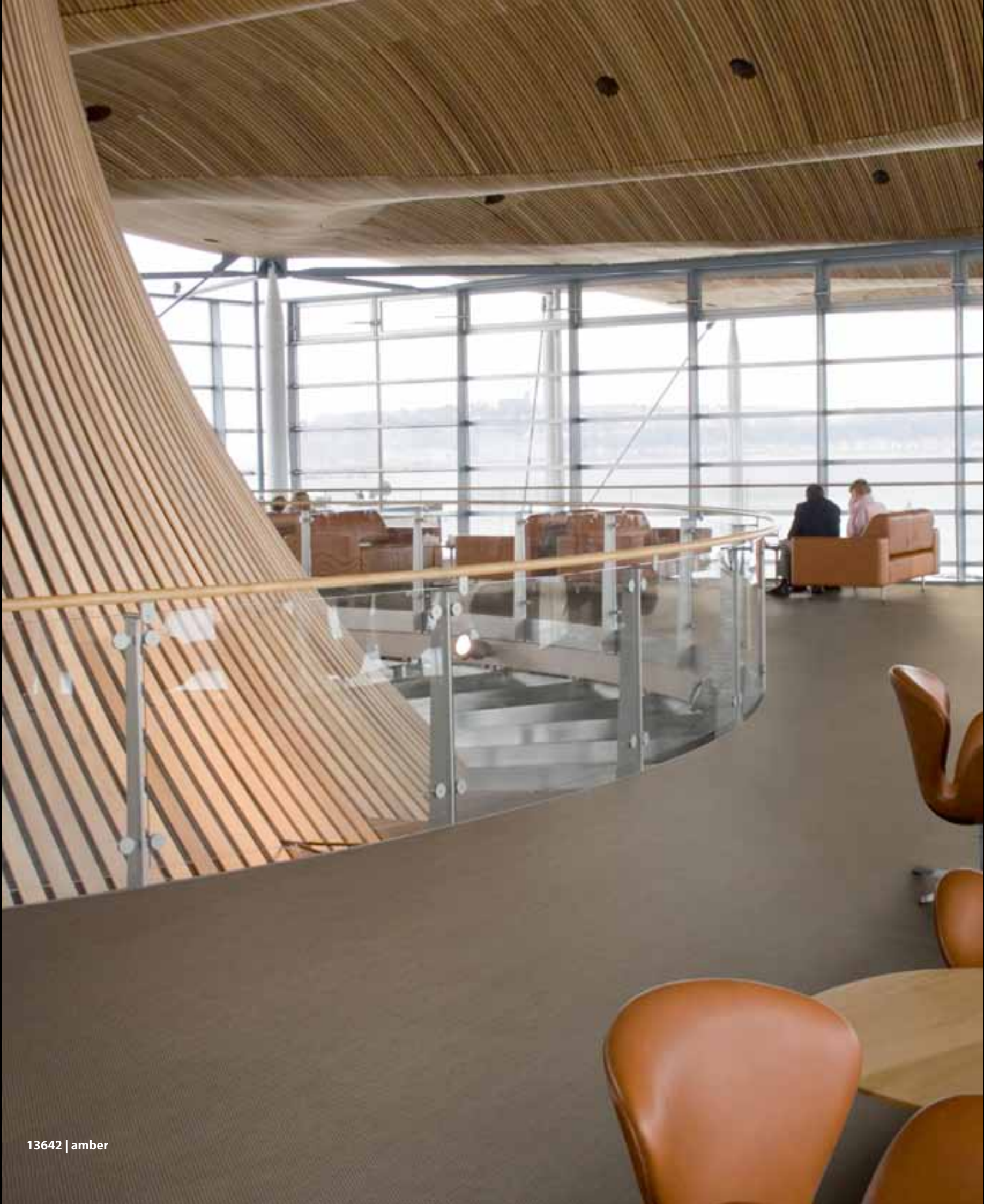


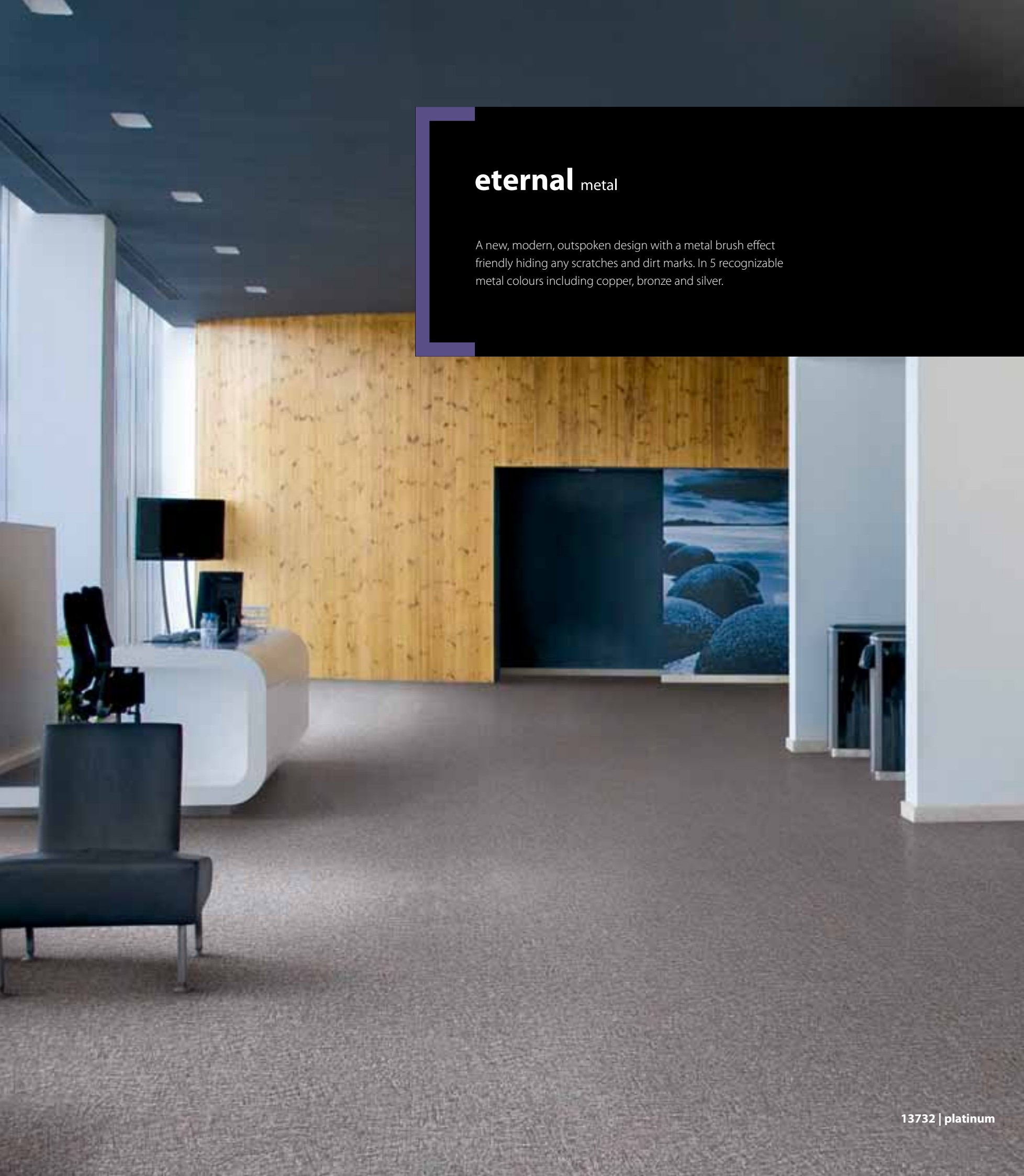
13632 | cord



13642 | amber

13642 | amber





eternal metal

A new, modern, outspoken design with a metal brush effect friendly hiding any scratches and dirt marks. In 5 recognizable metal colours including copper, bronze and silver.



Mix & Match graphic;
Contrast, Concrete and Metal



13712 | chrome



13722 | pewter



13732 | platinum



13742 | copper



13752 | bronze

13732 | platinum

eternal palette

A solid look with a fine glitter in the coloured wear-layer offering a surprising effect with an eye for detail. A contemporary, international fresh palette of 24 colours, including soft tones and primary colours.



Mix & Match colourfull;
Wood, Contrast
and Palette



40812 | taupe



40212 | mouse



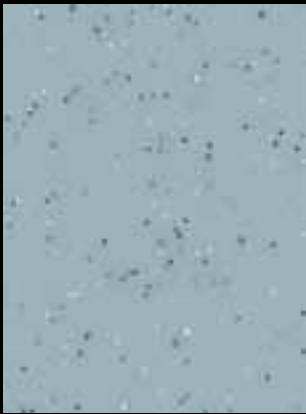
40112 | clay



40002 | snow



40402 | oyster



40272 | sky



40082 | tundra



40302 | sahara



40722 | pink



40162 | marine



40032 | pistachio

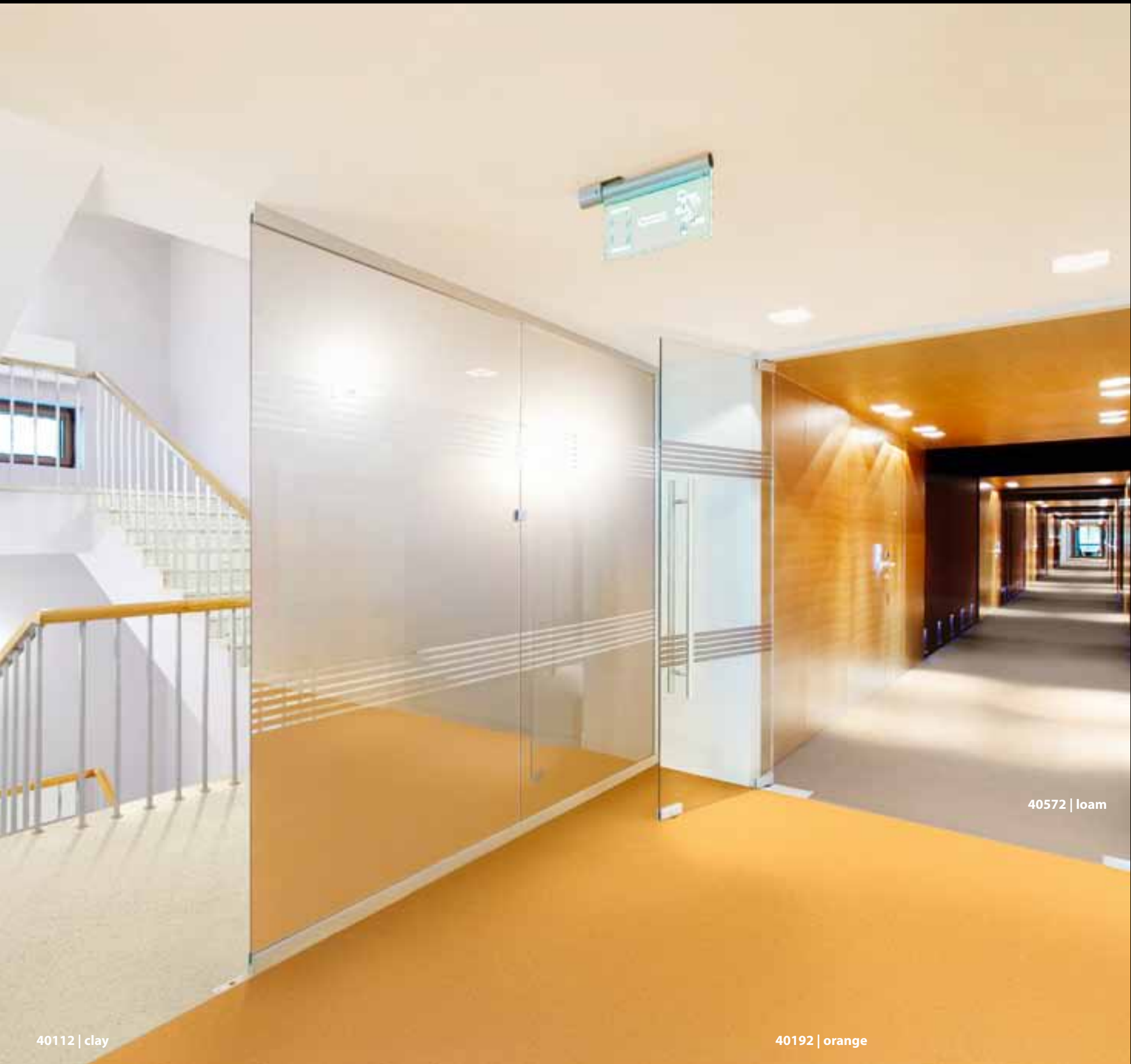


40512 | dune



40272 | sky

40212 | mouse



40112 | clay

40192 | orange

40572 | loam



40352 | corn



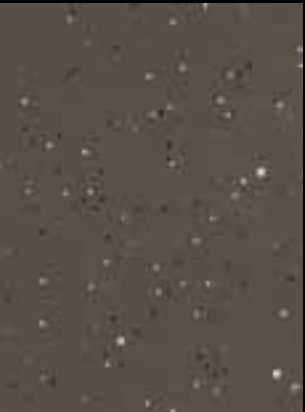
40192 | orange



40572 | loam



40882 | apple



40482 | dragon



40062 | umber



40232 | night



40382 | carbon



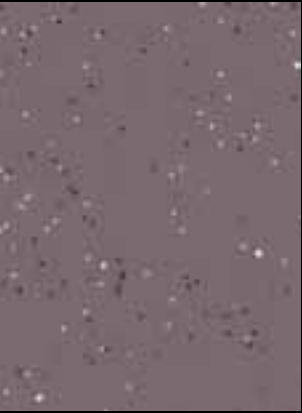
40662 | steel



40452 | pepper



40602 | plum



40772 | raisin

eternal contrast

- A unique graphic design with a black and a white design element scattered in a coloured wear layer.
- In 4 black, white and grey colours and an additional fresh colour scheme of 8 bright, outspoken colours.



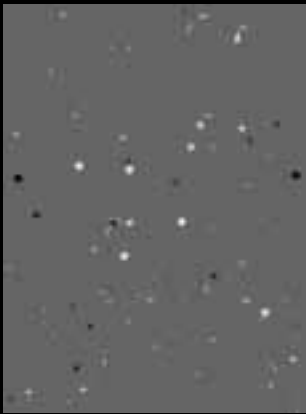
41002 | snow



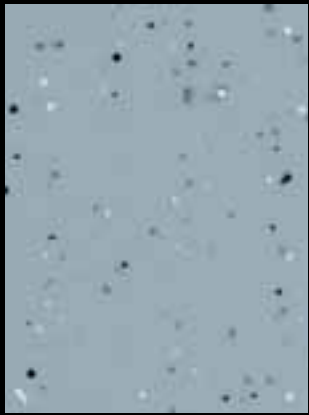
41292 | charcoal



41322 | smoke



41252 | mercury



41272 | sky



41662 | steel



41232 | night



41882 | apple



41032 | pistachio



41192 | orange



41972 | brick



41012 | tomato



41032 | pistachio

The Eternal collection; good looks that last

Calandered backing, consistent construction, colour fastness and unique embossing; this combination of surface layer treatment and particular manufacturing techniques creates the unique performance characteristics that make the Eternal collection stand out from the crowd.

The uniqueness of the Forbo Eternal collection is its performance over time. The cleaning and maintenance regime is simple and efficient, maintaining Eternal's "as new" appearance over many years.

PUR Pearl and PUR lacquering techniques

For the majority of our designs we use our famous, proven PUR Pearl lacquering protection technique. The application technique for the lacquering layer assures an even amount of lacquering both on top and in the deeper areas of the embossing. This matt embossed lacquer layer ensures the highest level of chemical and scuff resistance. The use of a special developed

'flexible lacquer' prevents the surface from scratching and maintains the long lasting appearance, compared to hard-lacquered products. In the small number of cases where the design demands a different finish, we employ the PUR finish instead.

Product construction

A transparent wear layer, or full coloured wear layer in case of Palette and Contrast, ensures a maximal wear resistance and maintains the design of the floor. A non woven, fully impregnated, glass fleece layer functions as the backbone of the product. It ensures dimensional stability and allows a lean-development approach, resulting in a sustainable thin product. Adding to stability and the high quality standard of Eternal project vinyl is the optimised calandered backing, a firm but flexible and embossed layer to allow easy installation, even in coving or wetroom applications. The backing layer, which is a substantial part of the construction, contains 40% re-used content.

Committed to protecting our environment

The Eternal general purpose vinyl collection is a prime example of Forbo's commitment to protecting the environment and investing in a sustainable future. The Eternal collection is produced using "green" energy and modern production technology that reduces the processes involved to a minimum. Eternal conforms to all standards, including the new VOC emission classes. And Eternal is made in Europe for largely European markets, reducing transport-related carbon emissions. The easy cleaning, minimum demand for detergents and long lasting performance contribute to a better environment in many ways.

Compliance Plus

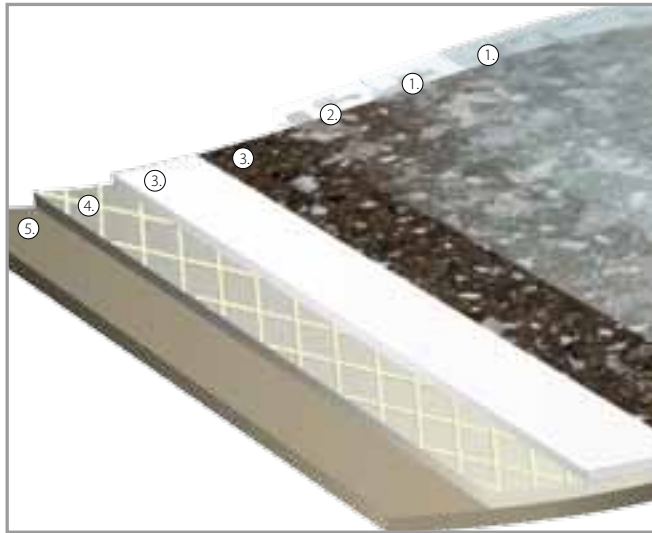
As a principle, Forbo works to "Compliance Plus" - a commitment set by our own standards and one that goes beyond government regulations and requirements – and we see investments in people, processes and products that further improve our environmental performance

as investments for the future, not a cost of doing business. We use independent Life Cycle Assessments to constantly seek ways to measure and minimise the environmental impact of our products from raw material extraction to end of life.

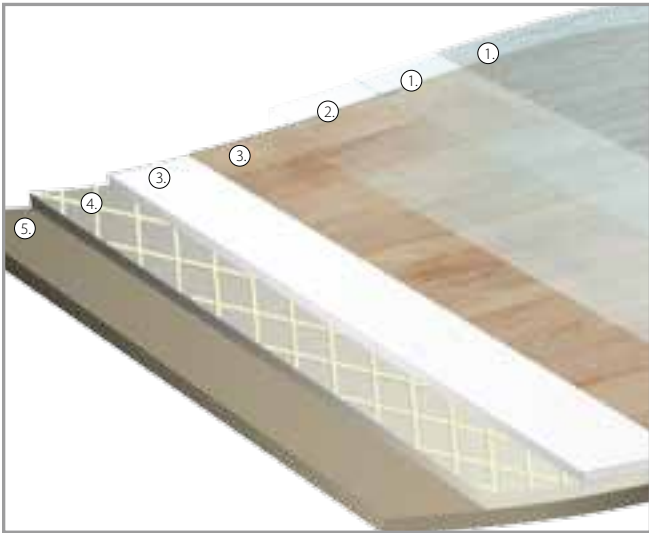
Reducing cleaning & maintenance

Reducing cleaning is another element in sustainability and performance. The PUR Pearl finish makes the product easy to clean and its lasting performance means that Eternal will stay in prime condition, even under heavy traffic conditions. In addition, installing one of our entrance flooring products will help cut dirt and moisture penetration by up to 90%.

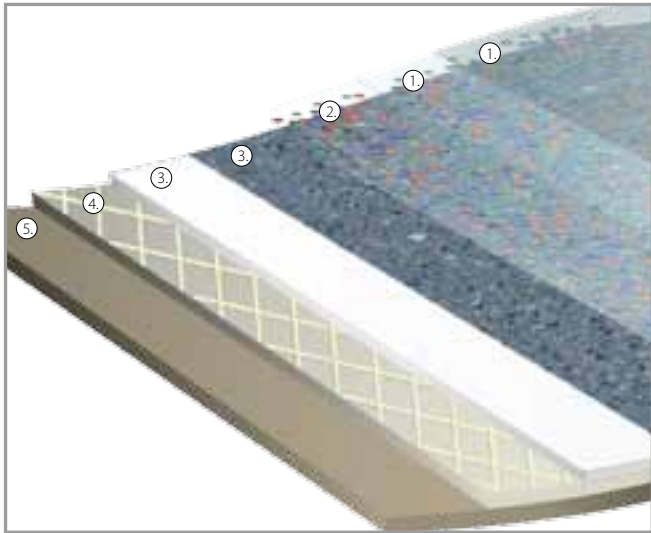
Eternal stone
1. PUR pearl lacquered finish – R10
2. Transparent compact wear layer 0.7mm with integrated chips
3. Printed layer
4. Impregnated glass fleece
5. Grey calandered backing with 40% re-used content



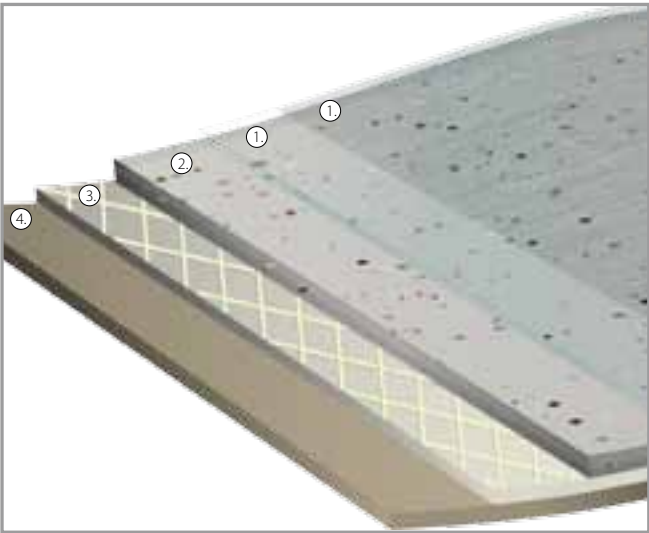
Eternal wood/slate/weave/sand/concrete/metal/marble
1. PUR pearl lacquered finish – R10
2. Transparent compact wear layer 0.7mm
3. Printed layer
4. Impregnated glass fleece
5. Grey calandered backing with 40% re-used content



Eternal smaragd
1. PUR pearl lacquered finish – R10
2. Transparent compact wear layer 0.7mm with integrated microspheres
3. Printed layer
4. Impregnated glass fleece
5. Grey calandered backing with 40% re-used content



Eternal Contrast/Palette
1. PUR pearl lacquered finish – R10
2. Coloured compact wear layer 0.7mm with integrated chips
3. Impregnated glass fleece
4. Grey calandered backing with 40% re-used content



More Forbo vinyl collections

Luxury vinyl tiles

The new Forbo Allura collection is a vibrant versatile range of floor covering options that take the world of luxury vinyl tiles to the next level of sophistication and performance. Allura is a cutting-edge collection of wood, stone and abstract designs, developed in-house by our international design team.

Acoustic project vinyl

Reducing noise pollution reduces stress and promotes the well-being, comfort and efficiency of people working or learning. Forbo offers the broadest range of acoustic project vinyl floors. Uniquely, these form a single collection and are ideal for reducing and managing noise pollution in open plan offices, shops, schools, housing, hospitals and reception areas.

Safety vinyl

Forbo's Step safety project vinyl collection is available in eight different ranges, all adapted to meet different anti-slip requirements. Surestep Original and Safestep provide enhanced slip resistance by incorporating either quartz or carborundum grains into the wear layer, or a combination of the two. Bright, clear designs such as Surestep Wood, Stone, Star and Colour are achieved by using aluminium oxide of the same hardness. The result is safety flooring that is tough, long-lasting and extremely wear-resistant.

More Forbo Flooring



Linoleum

As the world leader in linoleum, Forbo offers a huge range of natural linoleum floor coverings, plus surface linoleum for furniture and wall covering. More than 100 years of experience and the most environmentally friendly production techniques and products ensure the highest quality. Continual investment in product development ensures Forbo always offers the most innovative floor covering choices for project customers and consumers.



Flotex flocked flooring

The solid vinyl base of Flotex, reinforced with glass fleece, is impermeable to water and provides an anchor for millions of straight nylon fibres – over 70 million per square metre – making it the densest textile product available. Flotex's comfort, sense of luxury and Sanitized® anti-microbial treatment make it the perfect office floor and the best hygienic alternative to carpet in care facilities, while its design features make it the ideal floor for retail and hospitality environments.



Textile flooring

Forbo's textile collection consists of our carpet tile ranges and our entrance flooring ranges. Our carpet tile collections vary from loop pile and cut and loop pile products to highly exclusive fusion-bonded tiles with a choice of 180 colours. Every location has an entrance and besides being your first contact with the visitor, it also provides the first point of protection for the flooring inside. Forbo entrance-flooring products look good while also helping extend the life of all your interior floors.



Forbo FloorCare method

The Forbo project vinyl collections are easy to clean and maintain, thanks to their smooth and highly durable PURpearl and PUR coated surface.

Cleaning after installation



- Clean the floor with cleaner and a mop
- Pick up dirty water with a wiper and mop or a water vac
- Rinse with clean water and a mop
- Allow the floor to dry



- When intensive traffic is expected:
- Apply a full spray-film with an applicator
 - Buff the spray-film with a rotary machine and a buffing pad

Regular cleaning



- Wipe with a dust mop and dust cloth, or vacuum the floor



- Remove spots with a damp mop

Periodic cleaning



- Spray clean with a rotary machine and a buffing pad, use spray where necessary

Occasional maintenance



- Scrub with cleaner, a rotary machine and a scrub pad
- Pick up dirty water with a wiper and mop or a water vac
- Rinse with clean water and a mop
- Allow the floor to dry



- When intensive traffic is expected:
- Apply a full spray-film with an applicator
 - Buff the spray-film with a rotary machine and a buffing pad

Products

Forbo Cleaner is an effective and pH neutral cleaner.
Forbo Spray acts both as a spray cleaner and as a protective, satin gloss polish.
For more information: www.forbo-flooring.com.
If you want to use alternative products, please consult your local supplier.

Technical specifications

Eternal meets the requirements of ISO 10582 and EN 649

	Total thickness	ISO 24346 / EN 428	2.0 mm
	Wear layer thickness	ISO 24340 / EN 429	0.7 mm
	Collection size		113
	Commercial use	ISO 10874 / EN 685	34 very heavy
	Industrial use	ISO 10874 / EN 685	43 heavy
	Roll width	ISO 24341 / EN 426	2.00 m
	Roll length	ISO 24341 / EN 426	± 25 m
	Total weight	ISO 23997 / EN 430	2.8 kg/m²
	Dimensional stability	ISO 23999 / EN 434	< 0.1 %
	Residual indentation	ISO 24343-1 / EN 433	≤ 0.05 mm
	Abrasion resistance	EN 660-2	group T
	Castor chair continuous use	ISO 4918 / EN 425	no effect
	Light fastness	ISO 105-B02	≥ 6
	Flexibility	ISO 24344 / EN 435	ø 10 mm
	Resistance to chemicals	ISO 26787 / EN 423	very good
	Slip resistance	DIN 51130	R10
	Electrical resistance	EN 1081	R1 > 1·10⁹ Ω
	Suitable for floor heating		Yes*
	Wetroom certification	EN 13553	Yes

All Eternal products meet the requirements of EN 14041



	Reaction to fire	EN 13501-1	B _s -s1
	Slip resistance	EN 13893	DS - μ ≥ 0.30
	Body voltage	EN 1815	≤ 2 kV
	Thermal conductivity	EN 12524	0.25 W/m·K

* Temperature < 30 °C

The quality and environmental management systems of Forbo Coevorden (NL) where Forbo Eternal is manufactured are certified in accordance with ISO 9001 and ISO 14001

