

creating better environments

safety vinyl

project vinyl

surestep
safestep

SAFETY VINYL

forbo

FLOORING SYSTEMS

Content

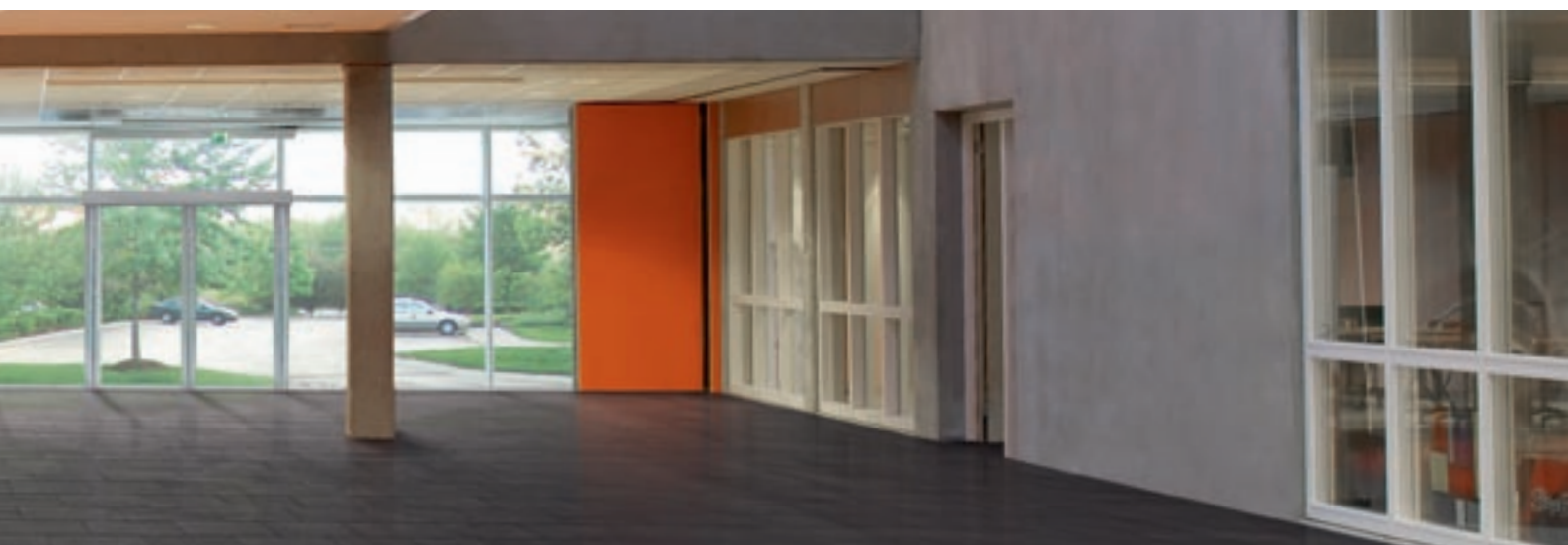
Introduction	3
Slip resistance	4
Product ranges	6
Collection benefits	9
Service products	11
Colour overview	12
surestep <small>original</small>	16
surestep <small>colour</small> , surestep <small>star</small>	18
surestep <small>wood</small> , surestep <small>stone</small>	20
safestep <small>R11</small> , safestep <small>R12</small> , safestep <small>grip</small>	22
Forbo FloorCare method	24
Forbo Flooring Collections	26
Technical specifications	27



Safer by design

Safety vinyl can be used wherever people work, learn, play or go about their daily business. Slip resistancy is a paramount consideration. The Step collection consists of eight ranges of highly durable vinyl floor coverings combining outstanding slip resistance to recognized international standards with an extensive range of designs featuring fresh colours and pleasing patterns. Offering the most complete choice in function and design, Step will help you achieve aesthetically attractive interiors in a wide range of commercial, educational, health care and retail interiors.

All the colours and patterns in the Step collection have been carefully coordinated, and each family of designs comes in a choice of slip resistance ratings, allowing the creation of harmonious, complementary environments no matter how varied and demanding the tasks to be performed.



Slip resistance

A safer environment

The Step safety project vinyl collection is available in 8 different ranges, all adapted to meet different anti slip requirements for flooring. Surestep Original and Safestep achieve their slip resistance by incorporating into the wear layer either quartz, or carborundum grains, or a combination of the two. Clarity in designs, such as Surestep Wood, Stone, Star and Colour, is achieved by using aluminium oxide, also having the same hardness. The result is safety flooring that is tough, long lasting and extremely wear resistant. All particles are so hard that they cannot wear, providing slip resistance that lasts throughout the life of the floor.



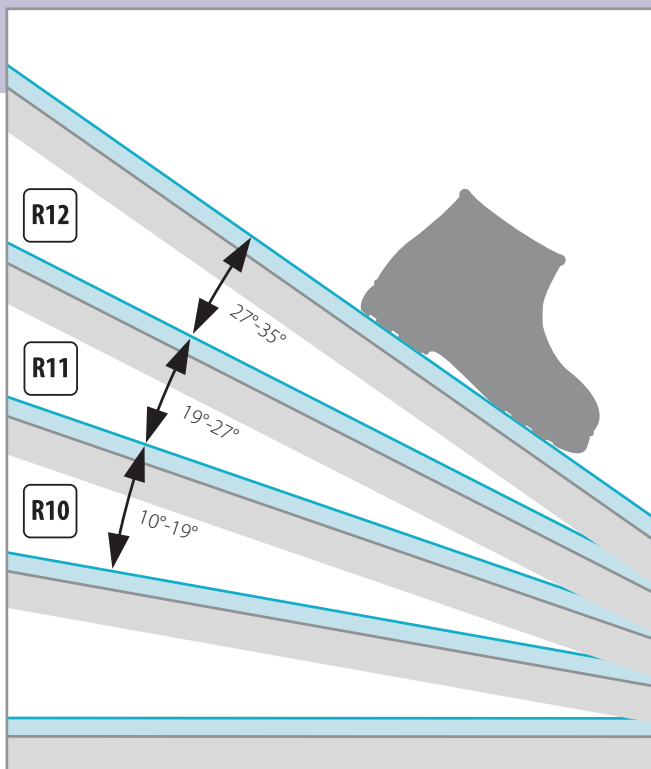
One slip or trip accident occurs every three minutes*

Responsible for over 37%* of accidents that lead to injury, slips and trips, floors have a lot to answer for. Slips and trips are the most common cause of injuries in the workplace. In addition to the extra cost for both employers and society, the most important aspect is the human suffering caused by accidents due to slipping or tripping.

By choosing a Step floor the number of accidents caused by slipping can be reduced significantly. In the long run this will mean less suffering for individuals and a reduction of cost.

* Health and Safety Establishment, UK

Classification of slip resistance



Floors are evaluated for slip resistance by using the 'R' scale, which runs from R9 to R13. Step is classed between R10 and R12. The 'R' scale is linked to a German DIN 51130 standard, and it measures slip resistance using a ramp. In order to arrive at a classification for a flooring product, a test person stands on a ramp on which the flooring is mounted. The floor subsequently is covered with oil. The ramp is tilted progressively and at the point where the person feels unsafe, the angle of the ramp is recorded.

EN 13845

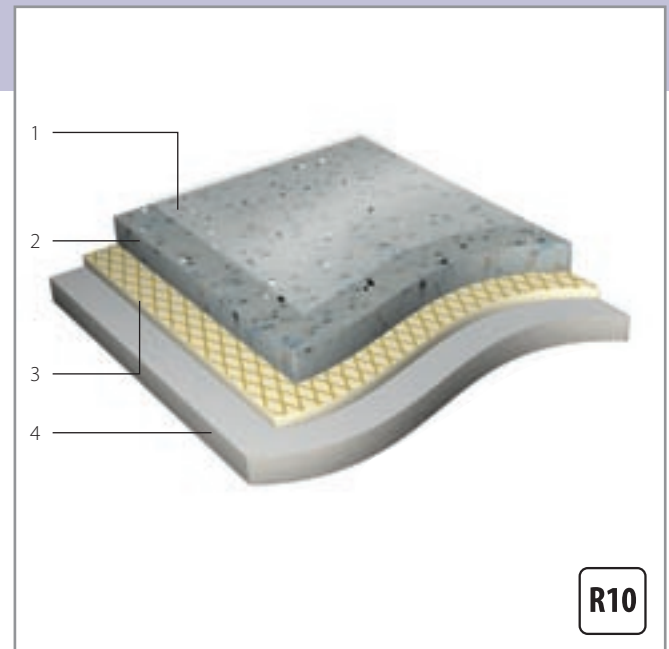
EN 13845 is the European standard that ensures the sustainability of slip resistance in vinyl floor coverings. It concerns PVC floor coverings with particle enhanced slip resistance. This standard specifies the requirements that must be met to ensure durable slip resistance in varying degrees of usage intensity. All Step floors comply with EN 13845.

Product ranges

The 8 product ranges in the Step safety vinyl collection ensure safety in all applications.

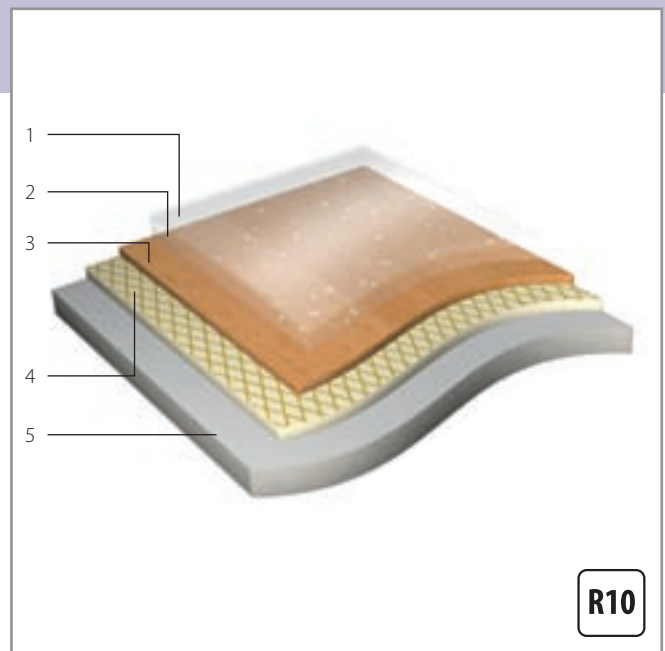
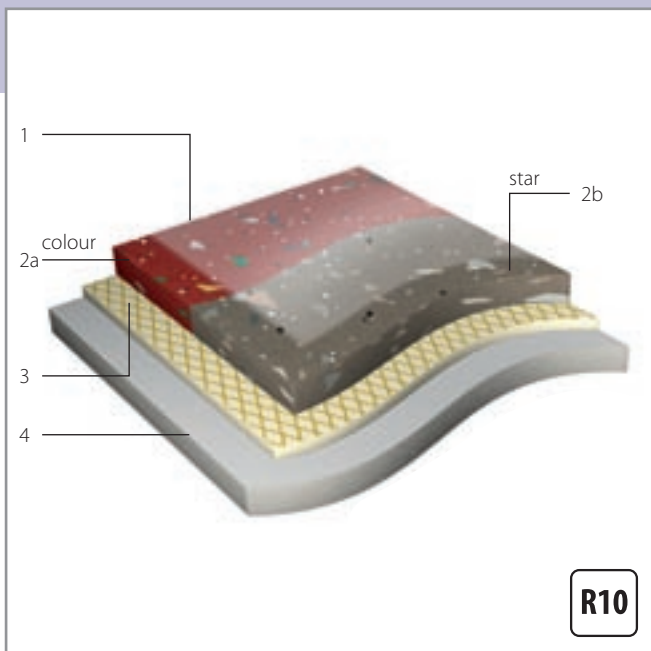
All R10 rated designs in the Step collection feature a PUR Pearl™ surface – a combination of embossing and lacquer that provides a distinctive smooth and lustrous matt finish with high scratch, scuff and wear resistance.

Safestep R11, R12 and Grip have a PUR surface finishing. This finish ensures effective cleaning and maintenance, even on this rougher surface.



surestep original

1. PUR Pearl™; PUR coating with matt embossing for easy cleaning and maintenance and a natural appearance
2. 0.7 mm 100% PVC wear layer with quartz and carborundum for durable slip resistance. Design layer, UV light resistant against fading
3. Flexible carrier for optimal dimensional stability
4. Backing with recycled content and roughened for easy installation

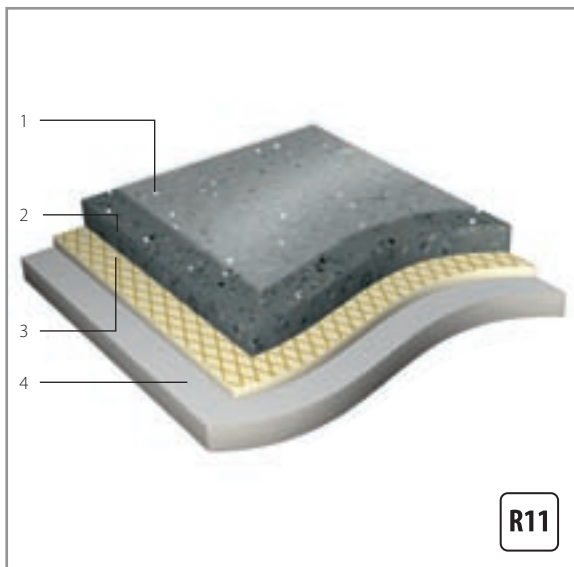


surestep colour, surestep star

1. PUR Pearl™; PUR coating with matt embossing for easy cleaning and maintenance and a natural appearance.
- 2a. Colour: 0.7 mm 100% PVC wear layer with aluminium oxide and coloured PVC chips for durable slip resistance. Design layer, UV light resistant against fading
- 2b. Star: 0.7 mm 100% PVC wear layer with aluminium oxide or carborundum with holographic and PVC chips for durable slip resistance. Design layer, UV light resistant against fading
3. Flexible carrier for optimal dimensional stability
4. Backing with recycled content and roughened for easy installation

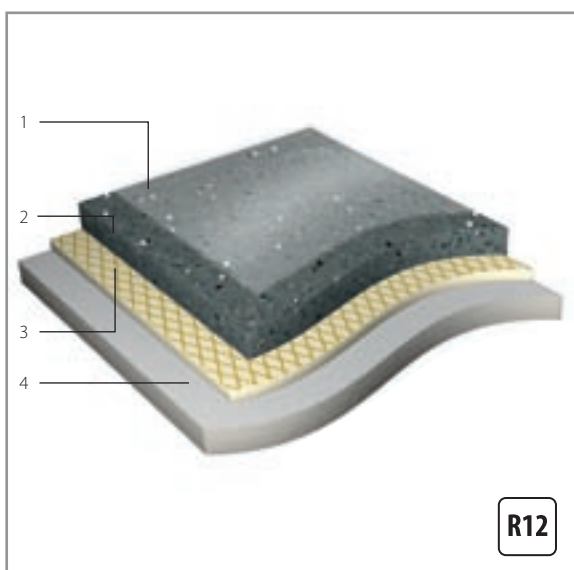
surestep wood, surestep stone

1. PUR Pearl™; PUR coating with matt embossing for easy cleaning and maintenance and a natural appearance
2. 0.7 mm 100% PVC wear layer with aluminium oxide or carborundum for durable slip resistance
3. Design layer, UV light resistant against fading
4. Flexible carrier for optimal dimensional stability
5. Backing with recycled content and roughened for easy installation



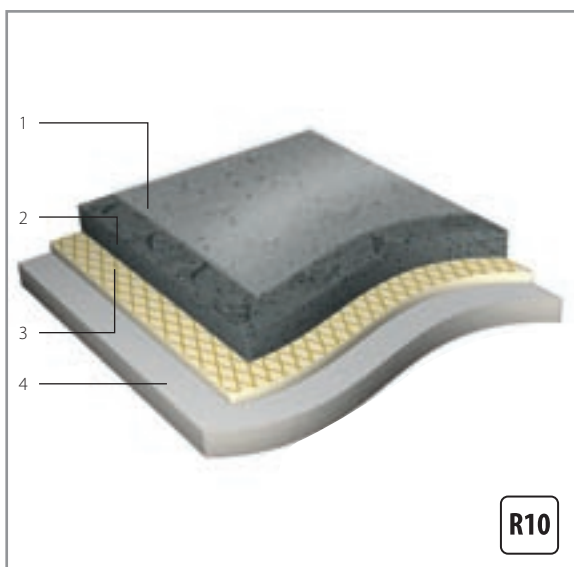
safestep R11

1. PUR coating for easy cleaning and maintenance and a natural appearance
2. 0.7 mm 100% PVC wear layer with quartz and carborundum for durable slip resistance. Design layer, UV light resistant against fading
3. Flexible carrier for optimal dimensional stability
4. Backing with recycled content and roughened for easy installation



safestep R12

1. PUR coating for easy cleaning and maintenance and a natural appearance
2. 0.7 mm 100% PVC wear layer with quartz and carborundum for durable slip resistance. Design layer, UV light resistant against fading
3. Flexible carrier for optimal dimensional stability
4. Backing with recycled content and roughened for easy installation



safestep grip

1. PUR coating for easy cleaning and maintenance and a natural appearance
2. Embossing for bare foot anti slip properties. 0.7 mm 100% PVC wear layer with quartz and carborundum for durable slip resistance. Design layer, UV light resistant against fading
3. Extreme flexible carrier for optimal installation and dimensional stability
4. Backing with recycled content and roughened for easy installation

Collection benefits

- Extensive design range, including Surestep Wood and Stone
- In compliance with all latest standards, with slip resistance from R10 to R12 and barefoot safety
- Unique usage of combination of quartz and carborundum or aluminum oxide particles ensuring durable slip resistance
- Excellent durability due to 0.7 mm wear layer, wear class is highest with group T rating
- Surestep Original, Colour and Star have dissipative properties
- All ranges are antistatic
- Extremely high indentation resistance
- Easy to clean and low scuff marking due to PUR Pearl™ and PUR coating, perfect for easy cleaning and maintenance
- Matt appearance for a natural look
- Flexible and easy to install, especially for Safestep Grip for wet areas

Design freedom

- Colour coordinated with other Forbo Flooring collections
- 72 different colours, enabling creative solutions
- Non directional patterns
- Logos can be made by using aquajet technique
- Matching or deliberately different designs of welding rods available



Surestep Original and Safestep achieve their slip resistance by incorporating into the wear layer either quartz or carborundum grains, or a combination of the two. Clarity in designs, such as Surestep Wood, Stone, Star and Colour, is achieved by using aluminium oxide, also having the same hardness. All particles are so hard that they cannot wear, providing slip resistance that lasts throughout the life of the floor.

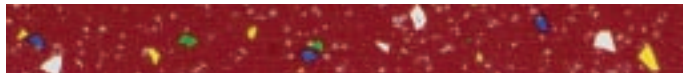
Environmental performance

- Step is made in accordance with the latest knowledge in PVC technology, applying the least environmentally harmful raw materials and processes
- Step complies to the highest indoor air climate standards such as the German AgBB scheme
- Step is made under compliance to the strict environmental standard ISO 14001
- Forbo is committed to Vinyl 2010; a voluntarily initiative of PVC manufacturers to improve the sustainable profile of PVC products by stimulating recycling initiatives

Eight distinctive, durable product ranges.
Together they make one superb collection.



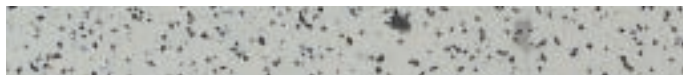
surestep original



surestep colour



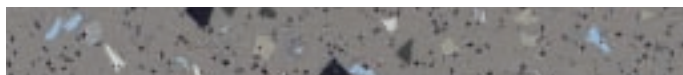
safestep grip



safestep R11



safestep R12



surestep star



surestep wood



surestep stone

Service products

Welding rods

In some application areas it is necessary or even mandatory to use welding rods. Welding rods ensure high levels of hygiene because they make seams easy to clean while preventing water from penetrating the floor covering. Using different colours of welding rod is a way to turn them into a decorative feature.

Aquajet

Aquajet cutting technology enables reproduction of the most intricate designs and allows for endless creativity. A fine computer-controlled jet of water at very high pressure is used to cut through the material.

Whether it is a thematic floor, a work of art, a company logo, the possibilities are limitless.



Matching welding rods are available in all collection colours.

Surestep Original

17199	SW199
17196	SW196
17194	SW194
17189	SW189
17183	SW183
17179	SW179
17176	SW176
17173	SW173
17172	SW172
17158	SW158
17150	SW150
17147	SW147
17129	SW129
17125	SW125
17121	SW121
17118	SW118
17114	SW114
17112	SW112
17102	SW102
17100	SW100

Surestep Wood

1892	SW192
1891	SW191
1872	SW272
1844	SW144
1832	SW132
1822	SW122
1816	SW116
1805	SW205

Surestep Stone

1733	SW133
1732	SW232
1722	SW222
1721	SW221
1719	SW119
1718	SW218
1705	SW105
1704	SW104

Surestep Colour

8999	SW199
8994	SW194
8978	SW178
8955	SW155
8935	SW135
8900	SW100

Surestep Star

17698	SW198
17695	SW195
17693	SW193
17628	SW128
17627	SW127
17626	SW126
17613	SW113
17606	SW106
17601	SW101
17600	SW100

Safestep Grip

17399	SW199
17396	SW196
17394	SW194
17389	SW189
17373	SW173
17358	SW158
17325	SW125
17302	SW102

Safestep R11

8299	SW199
8296	SW196
8294	SW194
8289	SW189
8273	SW173
8258	SW158
8225	SW125
8202	SW102

Safestep R12

8599	SW199
8594	SW194
8525	SW125
8502	SW102

For more information about Service Products and System Solutions contact your sales office or visit the website www.forbo-flooring.com



Colour overview

Matching welding rods are available in all collection colours.

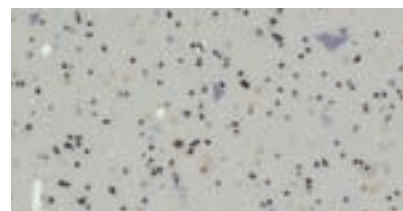
surestep original

R10

PUR
Pearl™



17121 dune



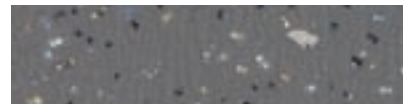
17102 smoke



17112 bianco



17100 fog



17194 elefant



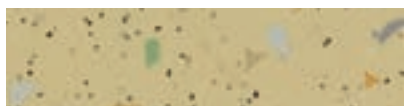
17114 sand



17150 oyster



17172 sky



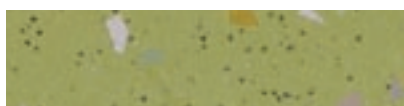
17118 tundra



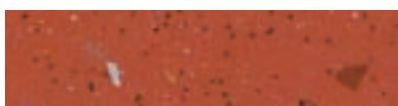
17125 mink



17173 storm



17183 pistachio



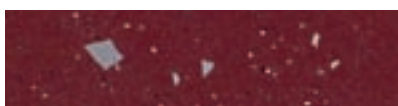
17147 brick



17176 marine



17189 petrol



17158 burgundy



17179 navy



17196 steel



17129 espresso



17199 charcoal

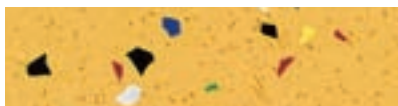
surestep colour

R10

PUR
Pearl™



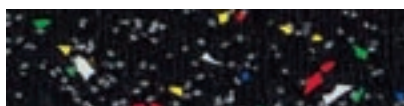
8900 snow



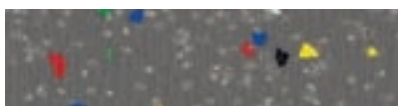
8935 corn



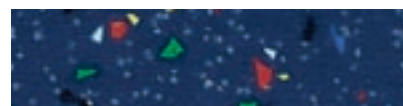
8955 pepper



8999 basalt



8994 shadow



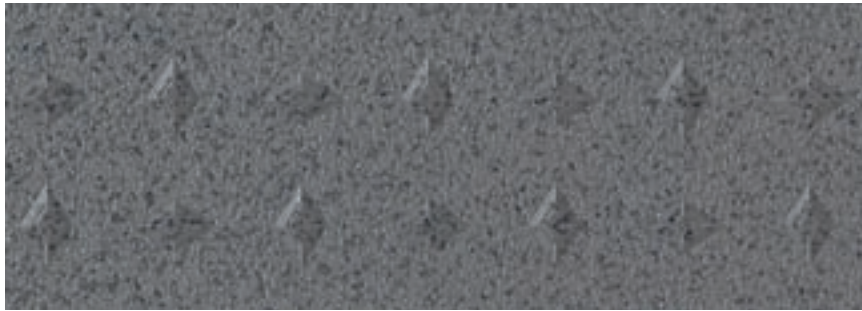
8978 night

Matching welding rods are available in all collection colours.

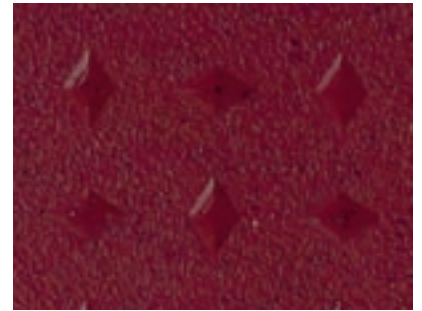
safestep grip

R10

PUR



17394



17358



17302



17373



17396



17325



17399



17389

safestep R11

R11

PUR



8273



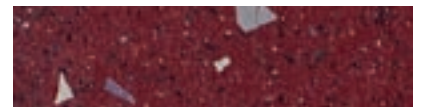
8202



8294



8296



8258



8225



8299

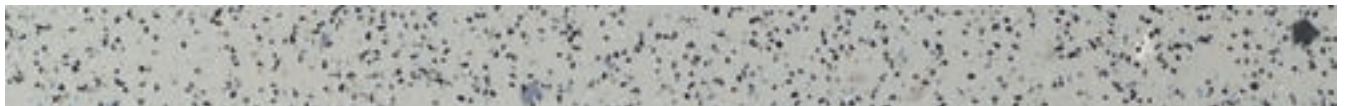


8289

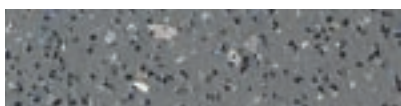
safestep R12

R12

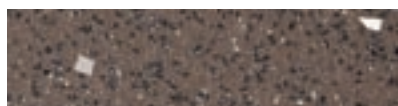
PUR



8502



8594



8525



8599



0.7 mm



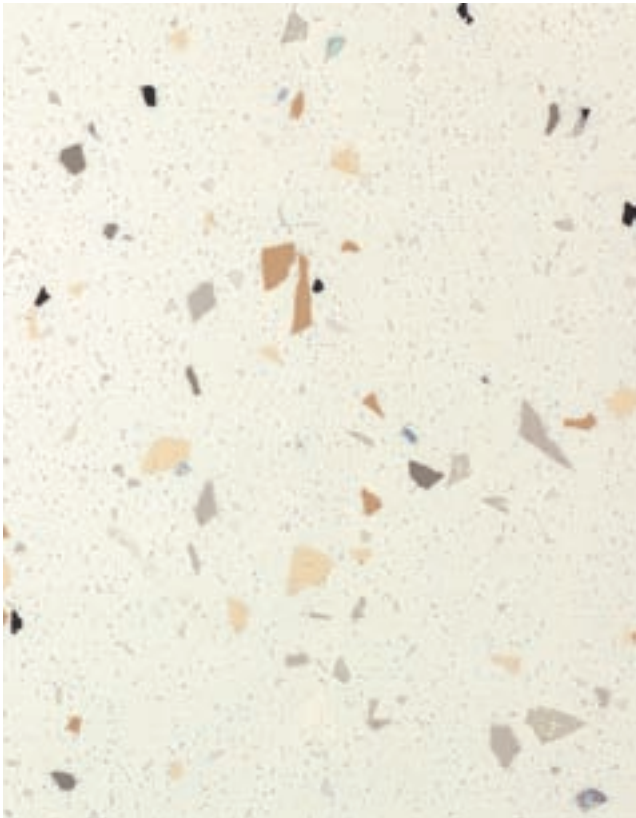
2.0 mm



200 cm



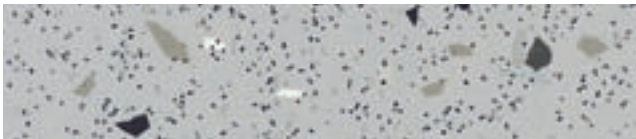
20-27 m



17600 milk



17613 clay



17601 trout



17693 concrete



17606 pewter



17626 umber



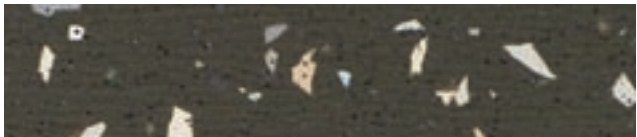
17695 mercury



17627 raisin



17698 carbon



17628 dragon



surestep[®] wood



1832 light beech



1822 sunny beech



1844 middle beech



1816 red cherry

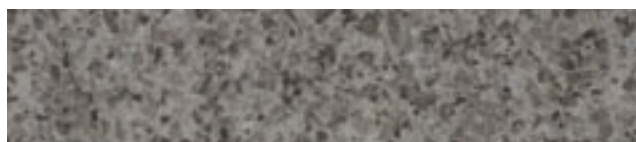
surestep[®] stone



1721 almond stone



1732 rusty rock



1704 silver granite



1718 gray concrete

Matching welding rods are available in all collection colours.



1892 natural oak



1891 rustic oak



1872 warm teak



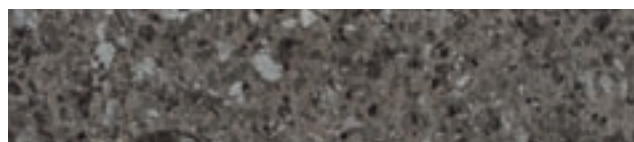
1805 dark wenge



1722 black stone



1733 nero rock



1705 antracite granite



1719 black concrete



0.7 mm



2.0 mm



198 cm



20-27 m

surestep – durable and easily maintained

Surestep offers a moderate increase in slip resistance, with excellent maintenance properties and high durability due to the inclusion of quartz and carborundum. The other Surestep ranges include aluminium oxide. Surestep can be installed in all general purpose areas requiring an R10 slip resistance. Surestep can also be easily maintained due to its unique PUR Pearl™.





surestep original

Lively, colourful and offering authentic, easily accessible designs for today.

Multifunctional Surestep is available in 20 diverse colours, from very light to very dark.





17626

surestep colour

Surestep Colour's outspoken primary colours and fresh, 'happy' patterns give a clean, crisp appearance that will enhance any environment. Positive, pure colours are easy to mix and match for a range of striking, optimistic effects.

surestep star

Innovative, muted and sophisticated, the larger size of chips used in Surestep Star ensures a floor that is more alive and more of today. The holographic chip gives a "surprise" 3D effect and adds colour to the natural and neutral colour series. Tones of today, all with hints of grey, provide a uniquely refined identity.





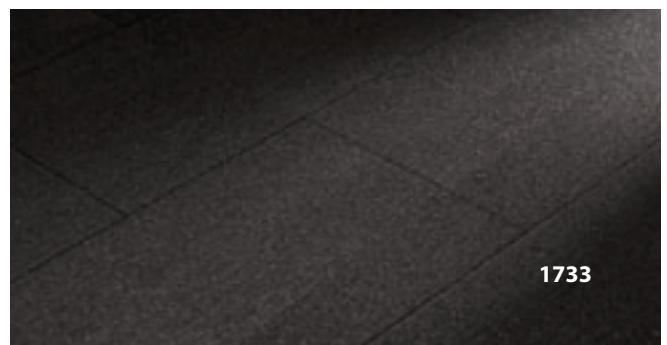


surestep wood

Natural, neutral, friendly designs, close to nature, with a warm atmosphere. Surestep Wood offers classical elegance with authentic images and lively structure with a natural grain. Surestep Wood is enriched by carborundum or aluminium oxide particles.

surestep stone

Contemporary designs with a stone look, featuring a combination of all over granito and tile or tile fantasy designs. Surestep Stone's hard and solid appearance comes in straightforward stone colours, dark and light, enriched by both carborundum or aluminium oxide particles.



safestep – high slip resistance

Safestep offers a powerful combination of high anti slip properties, good hygiene and functional, modern designs in a range of matched and interchangeable colours.

safestep R11

A combination of high slip resistance and high hygienic standards, ideal for areas with a general need for enhanced slip resistance. Safe and long lasting, and with PUR coating for easy cleaning and maintenance. Available in 8 colours, all colour matched with Surestep Original.

safestep R12

Long lasting, high slip resistant R12 rated floor ensures slip resistance under even the most extreme conditions. All 4 colours matched with Surestep Original. The PUR coating ensures easy cleaning and maintenance.



safestep grip

A rough, embossed surface for wet areas, barefoot areas or where shoes with a soft sole are worn.

Modern, industrial design with new, unique embossing shape, easy to weld, featuring diamond shapes. Available in 8 colours matched with Surestep Original and the other Safestep collections. Safestep Grip is uniquely made with a flexible carrier to improve installation properties. This makes Safestep Grip easy to fit in tight corners and around drains in wet areas.



Forbo FloorCare method

The Forbo safety vinyl collections are easy to clean and maintain, thanks to their smooth and highly durable PUR coated surface.

Surestep

Cleaning after installation



- Clean the floor with Cleaner and a mop
- Pick up dirty water with a wiper and mop or a water vac
- Rinse with clean water and a mop
- Allow the floor to dry

When intensive traffic is expected:

- Apply a full Spray-film with an applicator
- Buff the Spray-film with a rotary machine and a buffing pad

Regular cleaning



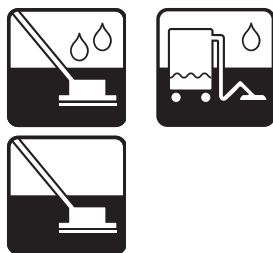
- Wipe with a dust mop and dust cloth, or vacuum the floor
- Remove spots with a damp mop

Periodic cleaning



- Spray clean with a rotary machine and a buffing pad, use Spray where necessary

Occasional maintenance



- Scrub with Cleaner, a rotary machine and a scrub pad
- Pick up dirty water with a wiper and mop or a water vac
- Rinse with clean water and a mop
- Allow the floor to dry

When intensive traffic is expected:

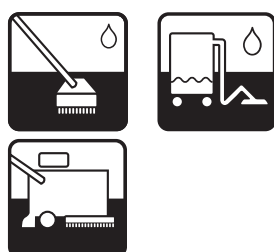
- Apply a full Spray-film with an applicator
- Buff the Spray-film with a rotary machine and a buffing pad

Products

Forbo Cleaner is an effective and pH neutral cleaner. **Forbo Spray** acts both as a spray cleaner and as protection. For more information: www.forbo-flooring.com. If you want to use alternative products, please consult your local supplier.

Safestep

Cleaning after installation



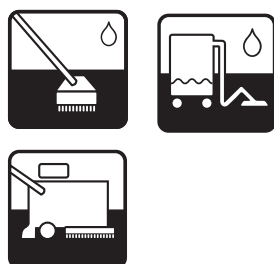
- Clean the floor with Cleaner and a brush
- Pick up dirty water with a wiper or a water vac
- Rinse with clean water and pick up the water
- Allow the floor to dry
- A combined scrubber-dryer can be used instead

Regular cleaning



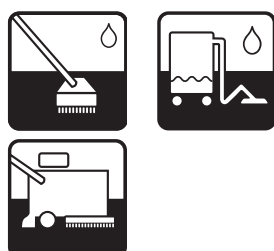
- Vacuum clean the floor with a brush attachment
- Remove spots with a damp mop

Periodic cleaning



- Clean the floor with Cleaner and a brush
- Pick up dirty water with a wiper or a water vac
- A combined scrubber-dryer can be used instead

Occasional maintenance



- On a heavily soiled floor, allow a Cleaner solution to soak for 5-10 minutes
- Scrub with Cleaner and a scrub brush
- Pick up dirty water with a wiper or a water vac
- Rinse with clean water and pick up the water
- Allow the floor to dry
- A combined scrubber-dryer can be used instead



Forbo Flooring Collections


















Forbo Flooring Systems offers you the most comprehensive range in commercial resilient floor coverings.

Below you will find the overview of our core ranges.

	General purpose	Acoustic	Conductive	Dissipative	Tiles	Slip resistant	
						by embossing	by particles
Marmoleum / Artoleum	●				●		
Marmoleum Acoustic		●					
Marmoleum Ohmex				●			
Marmoleum Decibel		●					
Marmoleum Sport							
Marmoleum Dual					●		
Cork linoleum		●					
Eternal	●					●	
Smaragd	●			●		●	
Effect	●			●		●	
Surestep Original	●			●			●
Surestep Colour	●			●			●
Surestep Star	●			●			●
Surestep Wood	●						●
Surestep Stone	●						●
Safestep R11							●
Safestep R12							●
Safestep Grip						●	●
Sarlon Tech	●	●				●	
Sarlon Quartz		●					
Sarlon Traffic		●			●		
Eternal Decibel		●				●	
Allura	●				●		
Flex SL	●				●		
Colorex Concept	●				●		
Colorex SD				●	●		
Colorex EC			●		●		





Technical specifications

Step meets the requirements of EN 649 and EN 13845

		Surestep Original	Surestep Colour	Surestep Wood	Surestep R11	Surestep Grip	Surestep R12
		Surestep Star	Surestep Stone				
	Total thickness	EN 428	2.0 mm	2.0 mm	2.0 mm	2.0 mm	2.0 mm
	Thickness wear layer	EN 429	0.7 mm	0.7 mm	0.7 mm	0.7 mm	0.7 mm
	Collection size		20/6/10	8/8	8	8	4
	Commercial very heavy	EN 685	Class 34	Class 34	Class 34	Class 34	Class 34
	Industrial heavy	EN 685	Class 43	Class 43	Class 43	Class 43	Class 43
	Roll width	EN 426	2.00 m	1.98 m	2.00 m	2.00 m	2.00 m
	Roll length	EN 426	20 - 27 m	20 - 27 m	20 - 27 m	20 - 27 m	20 - 27 m
	Total weight	EN 430	2.9 kg/m ²	2.9 kg/m ²	2.9 kg/m ²	2.9 kg/m ²	2.9 kg/m ²
	Dimension stability	EN 434	< 0.2%	< 0.2%	< 0.2%	< 0.2%	< 0.2%
	Residual indentation	EN 433	0.02 mm*	0.02 mm*	0.02 mm*	0.02 mm*	0.02 mm*
	Abrasion resistance	EN 660-1	Group T	Group T	Group T	Group T	Group T
	Castor chair continuous use	EN 425	No effect	No effect	No effect	No effect	No effect
	Light fastness	EN ISO 105 B-02	7	7	7	7	7
	Flexibility	EN 435	ø 10 mm	ø 10 mm	ø 10 mm	ø 10 mm	ø 10 mm
	Resistance to chemicals	EN 423	Very good	Very good	Very good	Very good	Very good
	Slip resistance	DIN 51130	R10	R10	R11	R10	R12
		EN 13845 Annex C	ESf	ESf	ESf	ESb	ESf
		DIN 51097	-	-	-	Class C	-
	Electrical resistance	EN 1081(R1;R2)	< 10 ⁹ Ω	> 10 ⁹ Ω	> 10 ⁹ Ω	> 10 ⁹ Ω	> 10 ⁹ Ω
	Surface finish		PUR Pearl™	PUR Pearl™	PUR	PUR	PUR

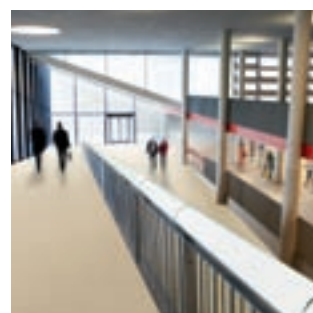
Step meets the requirements of EN 14041



	Reaction to fire	EN 13501-1	B _{f1} -s ₁	B _{f1} -s ₁	B _{f1} -s ₁	B _{f1} -s ₁	B _{f1} -s ₁
	Slip resistance	EN 13893	DS: > 0.50	DS: > 0.50	DS: > 0.50	DS: > 0.50	DS: > 0.50
	Body voltage	EN 1815	< 2kV	< 2kV	< 2kV	< 2kV	< 2kV
	Thermal conductivity	EN 12524	0.25 W/m·K	0.25 W/m·K	0.25 W/m·K	0.25 W/m·K	0.25 W/m·K

* typical value

Forbo Flooring Systems is part of the Forbo Group, a global leader in flooring, bonding and movement systems, and offers a full range of flooring products for both commercial and residential markets. High quality linoleum, vinyl, needle felt and hardwood floors combine functionality, colour and design, giving you total flooring solutions for any environment.



Other countries

Forbo Flooring B.V.
P.O. Box 13
1560 AA Krommenie
The Netherlands
T: +31 75 647 74 77
F: +31 75 647 77 01
contact@forbo.com
www.forbo-flooring.com



forbo

FLOORING SYSTEMS

creating better environments