

GUIDE

# ePRODUCT



**TechniStone®**  
A WILSONART COMPANY

# Contents

Our Story .....	3	Sustainability .....	36
About the Product .....	4	Environment and Sustainability Report .....	37
TechniStone® Material Use .....	5	References .....	38
Technical Information .....	7	One-Stop Information Hub for Professionals .....	40
<b>Color Range 2025</b> .....	<b>9</b>	Website .....	41
R&D .....	30	Where to Buy .....	42
Production .....	31	Inspiration .....	43
Certification .....	32	Social Media .....	44
Standards .....	33	Stone with Soul .....	46
Warranty .....	34	Customer Service .....	47
Maintenance and Cleaning .....	35		





# Our Story

Technistone was founded in 1991 and is one of Europe's largest producers of engineered stone. The company has branches and distributors in dozens of countries all over the world. In 2019 Technistone became part of the American corporation Wilsonart® Engineered Surfaces, a leading producer and distributor of materials for building interiors. Wilsonart® Engineered Surfaces are inspired by nature to transform spaces and give them the look you want — and the performance you need. The technical properties of engineered stone and Technistone's wide range of decors make our products ideal for use in kitchen and bathroom countertops, bartops, tiling, staircases, wall cladding, and more. Many designer projects, modern private residences, and commercial and industrial spaces have been fitted with engineered stone by Technistone.



The Life Of Technistone



breton



**TechniStone®**  
A WILSONART COMPANY

# About the Product

High durability, ease of maintenance, and attractive appearance have made engineered stone the material of choice for an increasing number of consumers worldwide. Our stone slabs are manufactured using natural mineral materials and colored pigments that are bonded with polyester resin. In addition, we use recycled glass and mirror shards in some products. Vibration under vacuum during pressing and subsequent polishing helps to achieve the non-porosity, which distinguishes engineered stone from natural stone and gives it greater resistance to staining. Natural mineral materials also provide higher scratch resistance.

Technistone's manufacturing process is subject to strict European standards that are applied to both raw material inputs and the final product. TechniStone® products are produced in large size slabs in several thicknesses, which have a wide range of applications in both the private and the commercial sectors.





# TechniStone® Material Use

Kitchen countertops

Kitchen wall cladding

Bars, dinner tables

Floor and stairs tiling

Bathroom vanity tops

Shower and bathtub cladding

Wall cladding

Fireplace cladding

Window sills

Wall decorations

Washbasins\*

Sinks\*

\*After consultation with the fabricator.



**Application**  
**possibilities**



**TechniStone®**  
A WILSONART COMPANY



Easy Maintenance  
& Cleaning



Suitable for Food  
Contact



Natural  
Raw Materials



Long Lifetime  
& Durability



Highly Scratch  
Resistant



Highly Stain & Natural  
Acid Resistant



Waterproof



Highly Bacteria  
Resistant





# Technical Information

## Slab Dimensions

**Jumbo 155:** 3185 mm × 1550 mm = 4,94 m<sup>2</sup>

**Jumbo 160:** 3200 mm × 1600 mm = 5,12 m<sup>2</sup>

**Jumbo 165:** 3300 mm × 1650 mm = 5,45 m<sup>2</sup>

## Tiles Dimensions (only in 10 mm thickness)

300 mm × 300 mm

600 mm × 600 mm

300 mm × 600 mm

## Slabs thickness and weight

SLAB THICKNESS	WEIGHT 1 m <sup>2</sup>	WEIGHT OF THE SLAB
Jumbo 155 size: 12 mm	30 kg	147 kg
Jumbo 155 size: 20 mm	50 kg	245 kg
Jumbo 155 size: 30 mm	74 kg	367 kg
Jumbo 160 size: 20 mm	50 kg	254 kg
Jumbo 160 size: 30 mm	74 kg	381 kg
Jumbo 165 size: 20 mm	49 kg	268 kg
Jumbo 165 size: 30 mm	74 kg	402 kg

## Finishes



**Physical-mechanical  
Characteristics**

*Bring the soul  
into your home*



**TechniStone®**  
A WILSONART COMPANY



## UNIQUE DESIGNS

Mistral White **NEW 2025**

Taj Mahal Gold **NEW 2025**

Badal Grey **NEW 2025**

Elysian Gold **NEW 2025**

Duna Beige **NEW 2025**

Morning Daisy

Country Rose

Wedding Lily

Wild Yucca

Calacatta Olympos

Calacatta Volegno

Calacatta Serchio

Calacatta Pastino

Crystal Calacatta Silva

Romano Ricco

Altamonte

Mystery White

Ambiente Light

Verde Peak

Bronze Coast

Glencoe

Imagine Grey

Metropole Nero

Residente Dark

Pearl Delta

## LIGHT DESIGNS

Crystal Absolute White

Noble Areti Bianco

Noble Supreme White

Brilliant White

Crystal Polar White

Crystal Nevada

Crystal Diamond

Brilliant Arabesco

Noble Arco

Noble Quartzite

Noble Linea

Noble Pro Frost

Noble Vintage

Elegance Eco Nev

Starlight White

Noble Villa

Noble Carrara

Noble Olympos Mist

Noble Ivory White

Noble Botticino

Crystal Royal

Harmonia Navajo

Taurus Terazzo White

## DARK DESIGNS

Noble Portland Grey

Noble Concrete Grey

Noble Pro Cloud

Noble Troya

Gobi Urban

Gobi Grey

Noble Pro Storm

Taurus Terazzo Grey

Crystal Anthracite Pure

Noble Pietra Grey

Noble Athos Brown

Noble Imperial Grey

Gobi Black

Crystal Belgium

Taurus Black

Taurus Terazzo Dark

Brilliant Black

Starlight Black

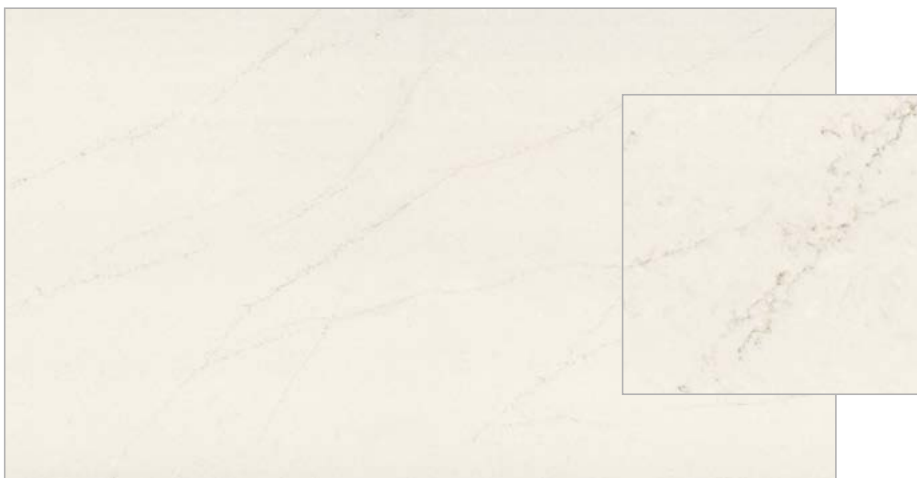
Crystal Vulcano

## Color Range 2025



[View online](#)

**TechniStone®**  
A WILSONART COMPANY



### Mistral White NEW 2025

Finish Polished  
Size Jumbo 155  
Thickness 20 mm, 30 mm



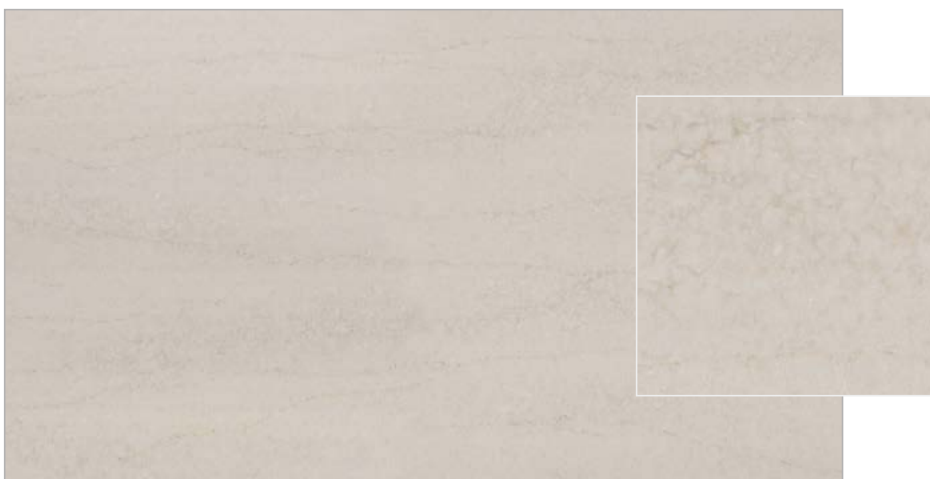
Video



Reference  
photo



Website  
detail



### Taj Mahal Gold NEW 2025

Finish Polished, matt  
Size Jumbo 155  
Thickness 20 mm, 30 mm



Video



Reference  
photo



Website  
detail



■ Mistral White





### Badal Grey

NEW 2025

Finish Polished  
Size Jumbo 155  
Thickness 20 mm, 30 mm



Video



Reference  
photo



Website  
detail



### Duna Beige

NEW 2025

Finish Polished  
Size Jumbo 155  
Thickness 20 mm, 30 mm



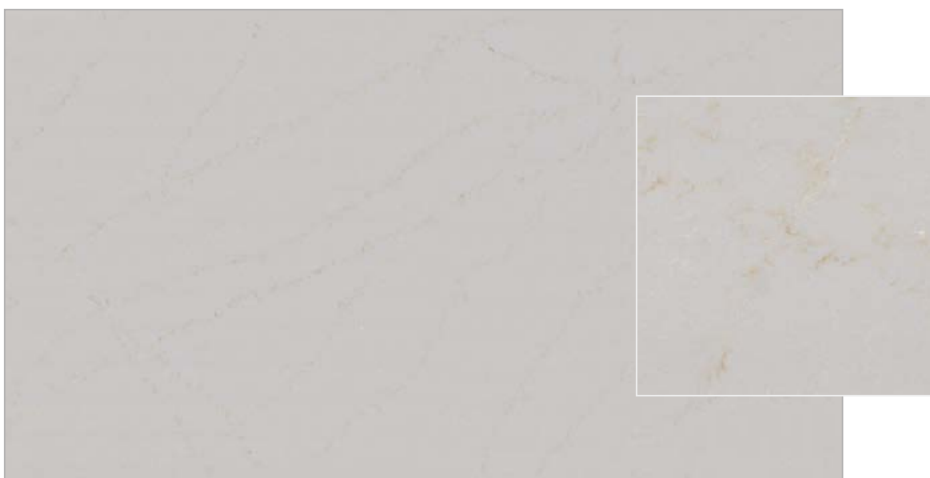
Video



Reference  
photo



Website  
detail



### Elysian Gold

NEW 2025

Finish Polished  
Size Jumbo 155  
Thickness 20 mm, 30 mm



Video



Reference  
photo



Website  
detail



■ Elysian Gold



### Morning Daisy

Finish Polished, matt  
Size Jumbo 155  
Thickness 20 mm, 30 mm



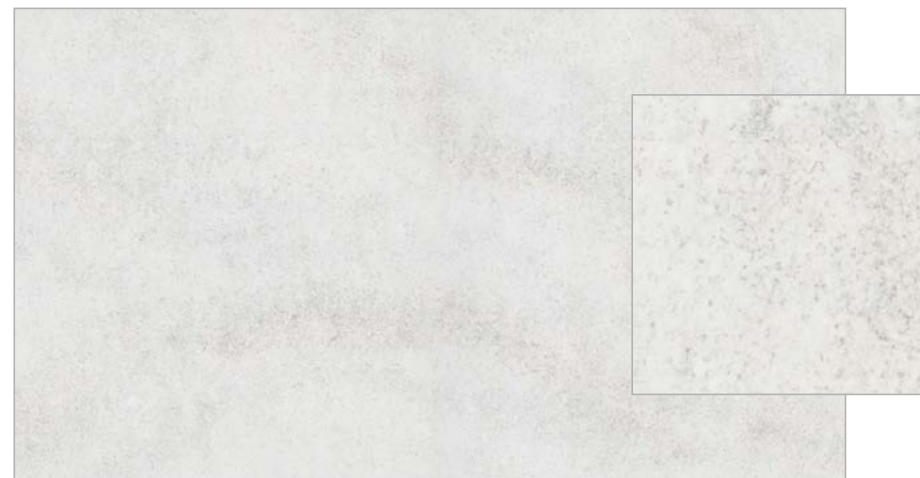
Video



Reference  
photo



Website  
detail



### Wedding Lily

Finish Polished, matt  
Size Jumbo 155  
Thickness 20 mm, 30 mm



Video



Reference  
photo



Website  
detail



### Country Rose

Finish Polished  
Size Jumbo 155  
Thickness 20 mm, 30 mm



Video



Reference  
photo



Website  
detail



### Wild Yucca

Finish Polished  
Size Jumbo 155  
Thickness 20 mm, 30 mm



Video



Reference  
photo



Website  
detail





**Calacatta Olympos**

Finish            Polished  
 Size             Jumbo 165  
 Thickness       20 mm, 30 mm



Video



Reference  
photo



Website  
detail



**Calacatta Serchio**

Finish            Polished  
 Size             Jumbo 165  
 Thickness       20 mm, 30 mm



Video



Reference  
photo



Website  
detail



**Calacatta Volegno**

Finish            Polished  
 Size             Jumbo 165  
 Thickness       20 mm, 30 mm



Video



Reference  
photo



Website  
detail



**Calacatta Pastino**

Finish            Polished  
 Size             Jumbo 165  
 Thickness       20 mm, 30 mm



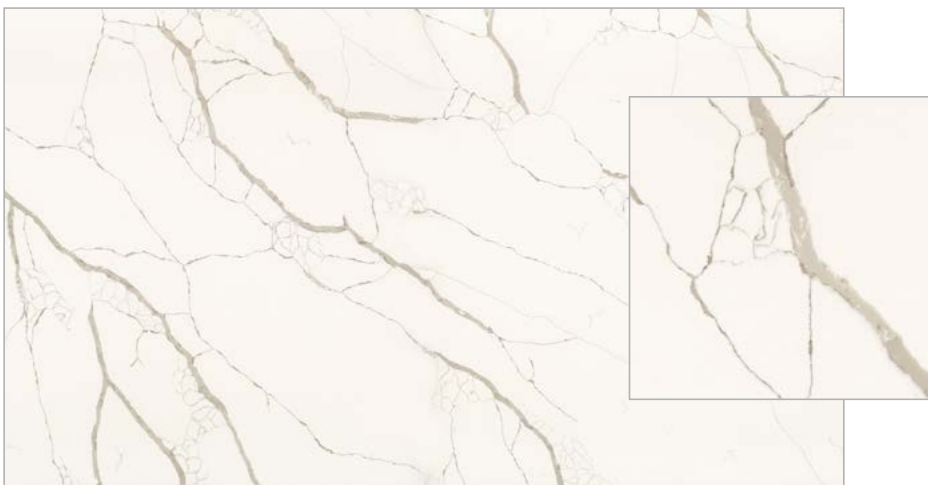
Video



Reference  
photo



Website  
detail



### Crystal Calacatta Silva

Finish Polished  
Size Jumbo 160  
Thickness 20 mm, 30 mm



Video



Reference  
photo



Website  
detail



### Altamonte

Finish Polished  
Size Jumbo 165  
Thickness 20 mm, 30 mm



Video



Reference  
photo



Website  
detail



### Romano Ricco

Finish Polished  
Size Jumbo 160  
Thickness 20 mm, 30 mm



Video



Reference  
photo



Website  
detail



### Mystery White

Finish Polished  
Size Jumbo 160  
Thickness 20 mm, 30 mm



Video



Reference  
photo



Website  
detail





### Ambiente Light

Finish Terra  
Size Jumbo 160  
Thickness 20 mm, 30 mm



Video



Reference  
photo



Website  
detail



### Bronze Coast

Finish Polished  
Size Jumbo 165  
Thickness 20 mm, 30 mm



Video



Reference  
photo



Website  
detail



### Verde Peak

Finish Polished  
Size Jumbo 165  
Thickness 20 mm, 30 mm



Video



Reference  
photo



Website  
detail



### Glencoe

Finish Polished  
Size Jumbo 165  
Thickness 20 mm, 30 mm



Video



Reference  
photo



Website  
detail



### Imagine Grey

Finish Polished, matt  
Size Jumbo 160  
Thickness 20 mm, 30 mm



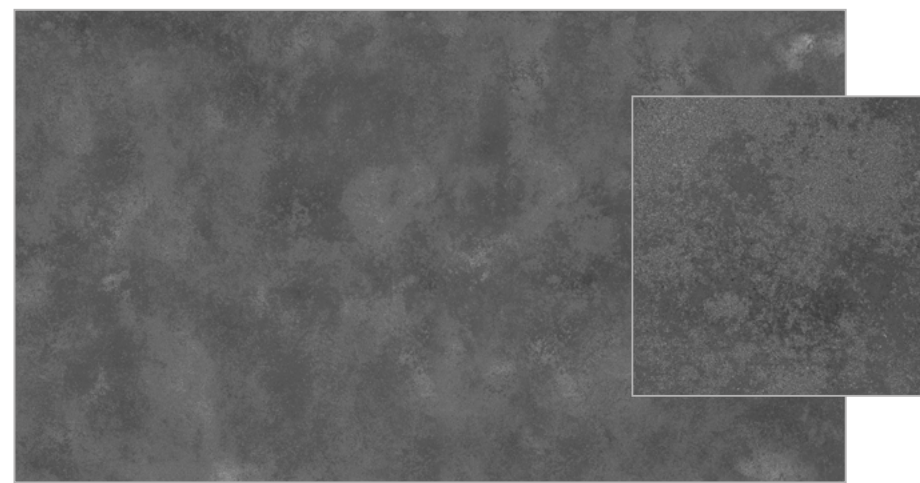
Video



Reference  
photo



Website  
detail



### Residente Dark

Finish Terra  
Size Jumbo 160  
Thickness 20 mm



Video



Reference  
photo



Website  
detail



### Metropole Nero

Finish Matt  
Size Jumbo 160  
Thickness 20 mm



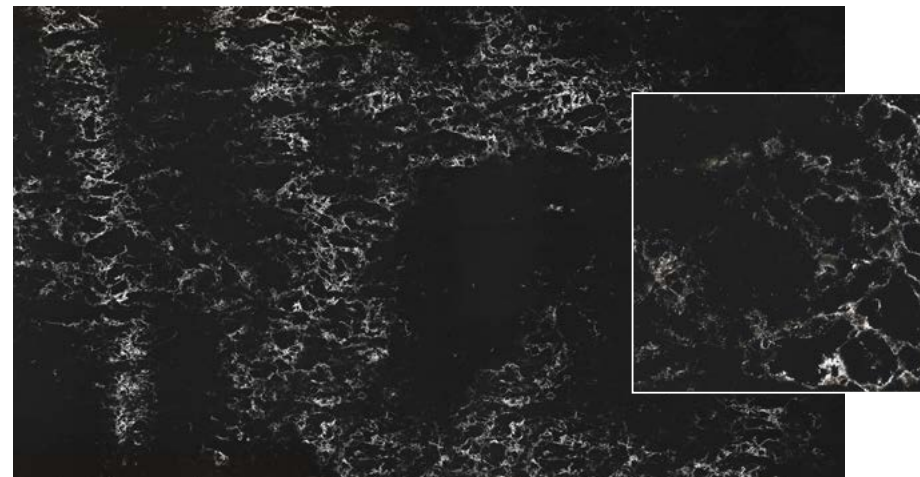
Video



Reference  
photo



Website  
detail



### Pearl Delta

Finish Polished  
Size Jumbo 155  
Thickness 20 mm, 30 mm  
Recycled materials 40%



Video

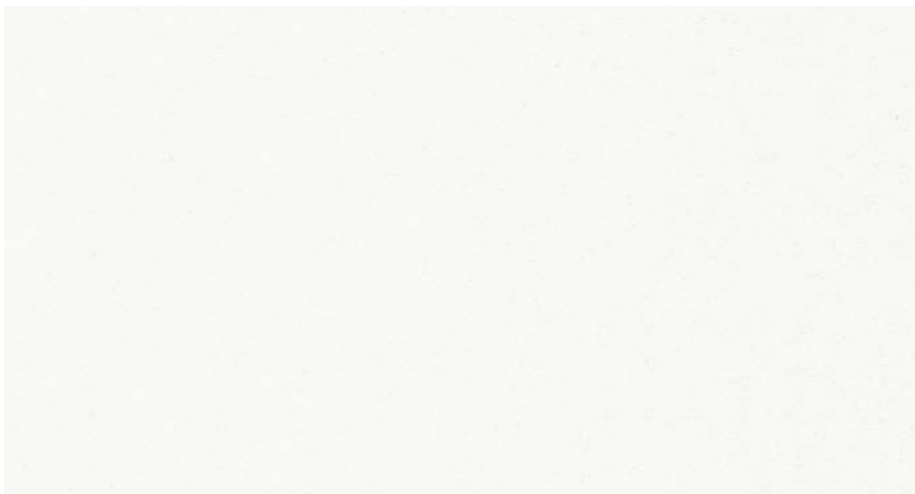


Reference  
photo



Website  
detail





### Crystal Absolute White

Finish Polished  
Size Jumbo 155  
Thickness 20 mm, 30 mm



Reference  
photo



Website  
detail



### Noble Supreme White

Finish Polished  
Size Jumbo 155  
Thickness 20 mm, 30 mm



Reference  
photo



Website  
detail



### Noble Areti Bianco

Finish Polished  
Size Jumbo 155  
Thickness 20 mm, 30 mm



Video



Reference  
photo



Website  
detail



### Brilliant White

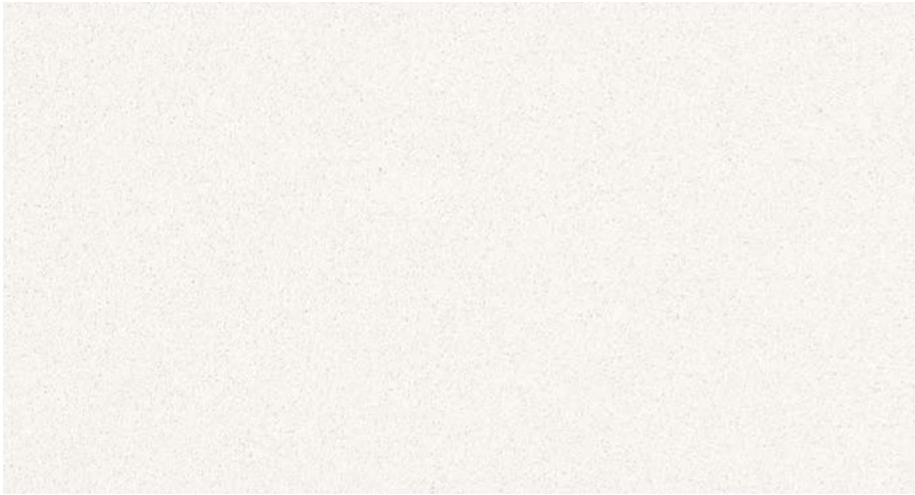
Finish Polished  
Size Jumbo 155  
Thickness 20 mm, 30 mm  
Recycled materials 30%



Reference  
photo



Website  
detail



### Crystal Polar White

Finish Polished  
Size Jumbo 155  
Thickness 20 mm, 30 mm



Reference  
photo



Website  
detail



### Crystal Diamond

Finish Polished  
Size Jumbo 155  
Thickness 20 mm, 30 mm



Reference  
photo



Website  
detail



### Crystal Nevada

Finish Polished  
Size Jumbo 155  
Thickness 20 mm



Reference  
photo



Website  
detail



### Brilliant Arabesco

Finish Polished  
Size Jumbo 155  
Thickness 20 mm, 30 mm  
Recycled materials 30%



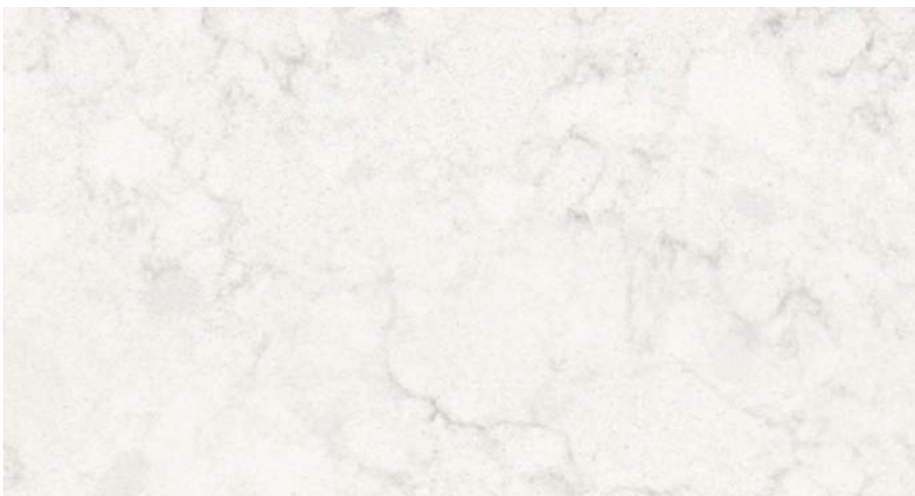
Video



Reference  
photo



Website  
detail



### Noble Arco

Finish Polished, matt  
Size Jumbo 155  
Thickness 20 mm, 30 mm



Video



Reference  
photo



Website  
detail



### Noble Linea

Finish Polished  
Size Jumbo 155  
Thickness 20 mm, 30 mm



Video



Reference  
photo



Website  
detail



### Noble Quartzite

Finish Polished, matt  
Size Jumbo 155  
Thickness 20 mm, 30 mm



Video



Reference  
photo



Website  
detail



### Noble Pro Frost

Finish Polished  
Size Jumbo 155  
Thickness 20 mm, 30 mm



Video



Reference  
photo



Website  
detail





### Noble Vintage

Finish Polished, matt  
 Size Jumbo 155  
 Thickness 12 mm, 20 mm, 30 mm



Video



Reference  
photo



Website  
detail



### Elegance Eco Nev

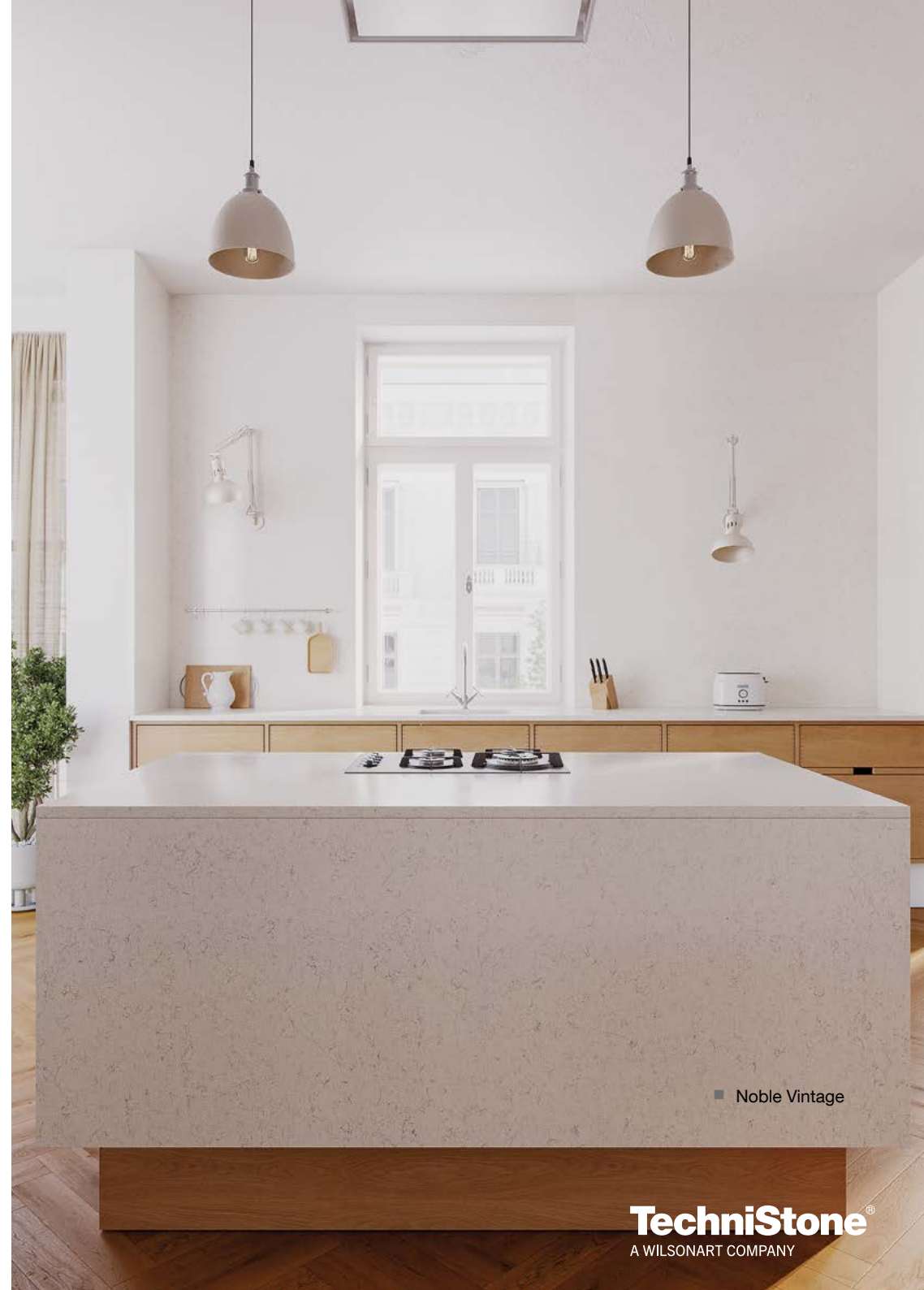
Finish Polished  
 Size Jumbo 155  
 Thickness 20 mm, 30 mm  
 Recycled materials 30%



Reference  
photo



Website  
detail



■ Noble Vintage

**TechniStone**<sup>®</sup>  
 A WILSONART COMPANY



### Starlight White

Finish Polished  
Size Jumbo 155  
Thickness 20 mm, 30 mm  
Recycled materials 40%



Reference  
photo



Website  
detail



### Noble Carrara

Finish Polished  
Size Jumbo 155  
Thickness 20 mm, 30 mm



Reference  
photo



Website  
detail



### Noble Villa

Finish Polished, matt  
Size Jumbo 155  
Thickness 20 mm



Video



Reference  
photo



Website  
detail



### Noble Olympos Mist

Finish Polished  
Size Jumbo 155  
Thickness 20 mm



Video



Reference  
photo



Website  
detail





### Noble Ivory White

Finish Polished  
Size Jumbo 155  
Thickness 20 mm, 30 mm



Reference  
photo



Website  
detail



### Crystal Royal

Finish Polished  
Size Jumbo 155  
Thickness 20 mm, 30 mm



Reference  
photo



Website  
detail



### Noble Botticino

Finish Polished  
Size Jumbo 155  
Thickness 20 mm



Reference  
photo



Website  
detail



### Harmonia Navajo

Finish Polished  
Size Jumbo 155  
Thickness 20 mm, 30 mm



Video

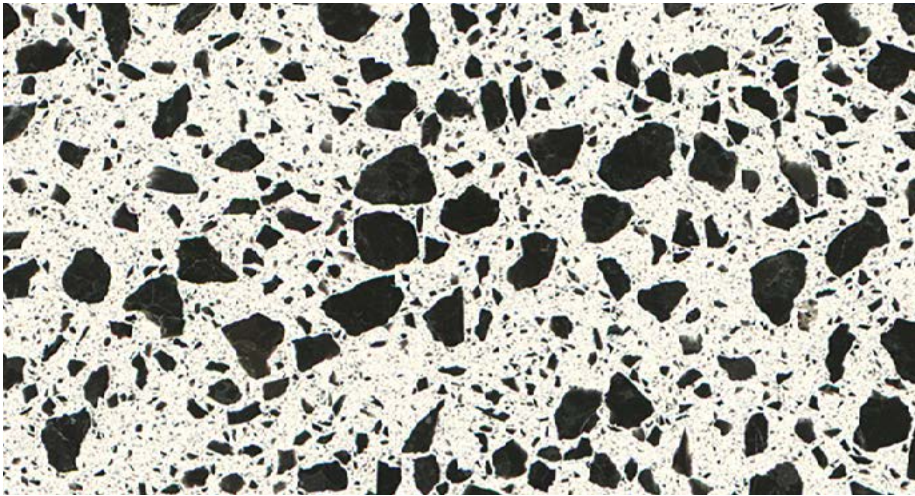


Reference  
photo



Website  
detail





### Taurus Terazzo White

Finish Polished, matt  
 Size Jumbo 155  
 Thickness 12 mm, 20 mm  
 Recycled materials 40%



Video



Reference  
photo



Website  
detail



### Noble Portland Grey

Finish Polished, matt  
 Size Jumbo 155  
 Thickness 20 mm



Video



Reference  
photo



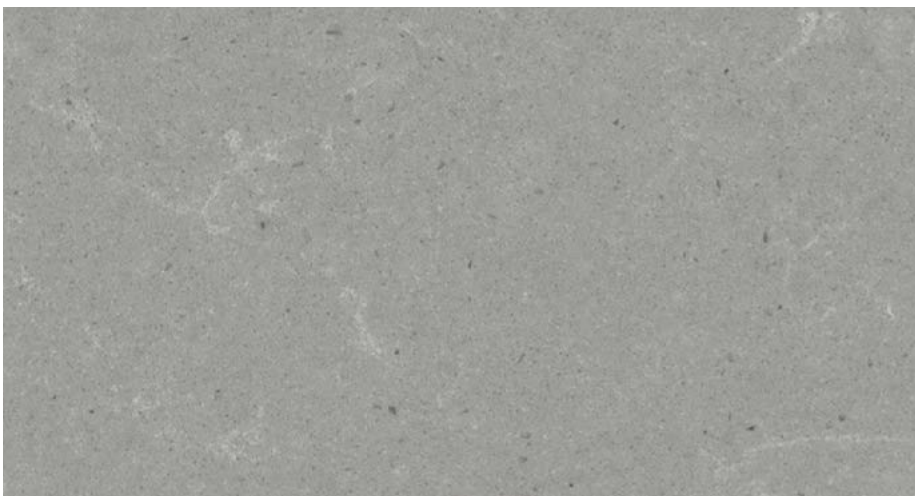
Website  
detail



■ Taurus Terazzo White

**TechniStone®**  
 A WILSONART COMPANY





### Noble Concrete Grey

Finish Polished, matt  
Size Jumbo 155  
Thickness 12 mm, 20 mm, 30 mm



Video



Reference  
photo



Website  
detail



### Noble Troya

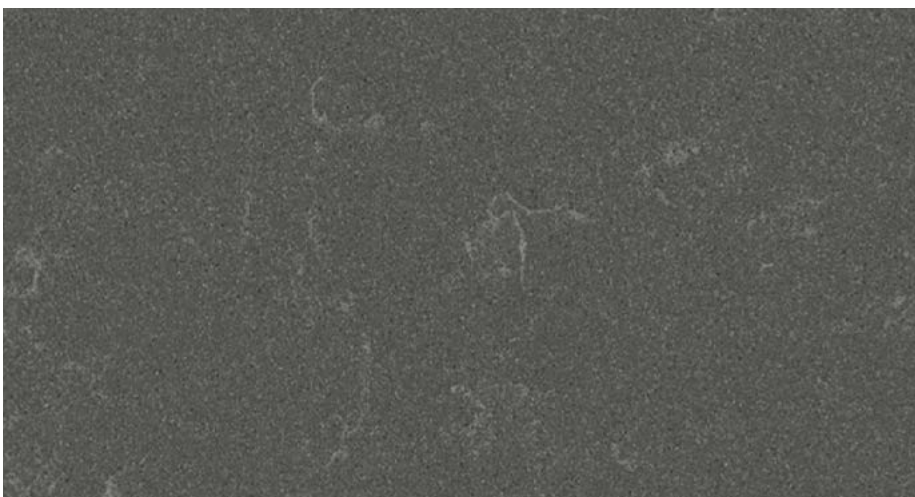
Finish Polished  
Size Jumbo 155  
Thickness 20 mm



Reference  
photo



Website  
detail



### Noble Pro Cloud

Finish Polished  
Size Jumbo 155  
Thickness 20 mm, 30 mm



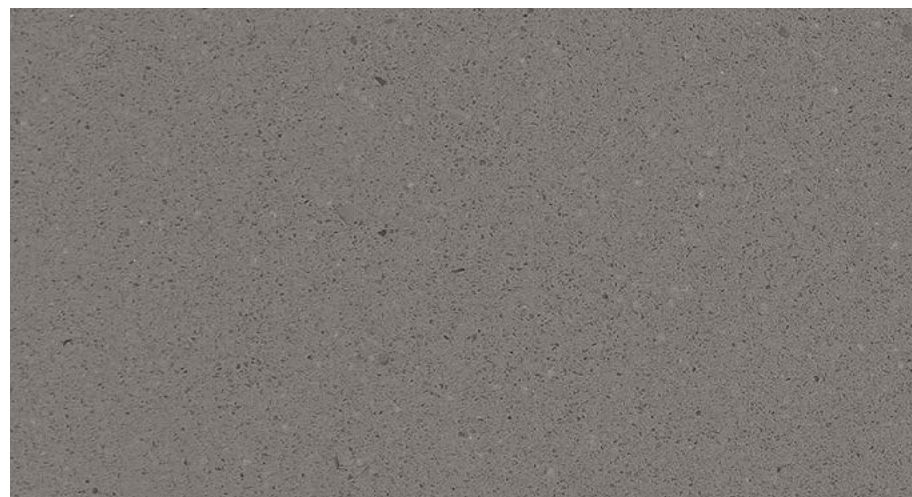
Video



Reference  
photo



Website  
detail



### Gobi Urban

Finish Polished, matt  
Size Jumbo 155  
Thickness 20 mm, 30 mm



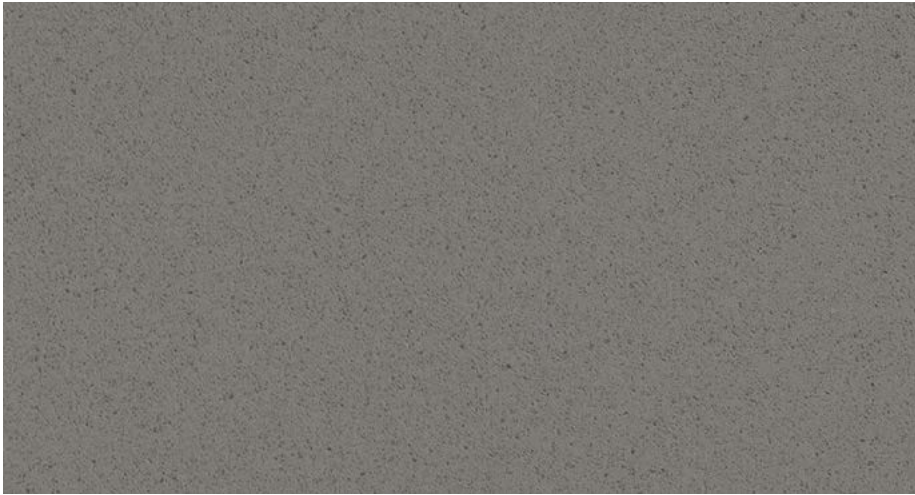
Video



Reference  
photo



Website  
detail



### Gobi Grey

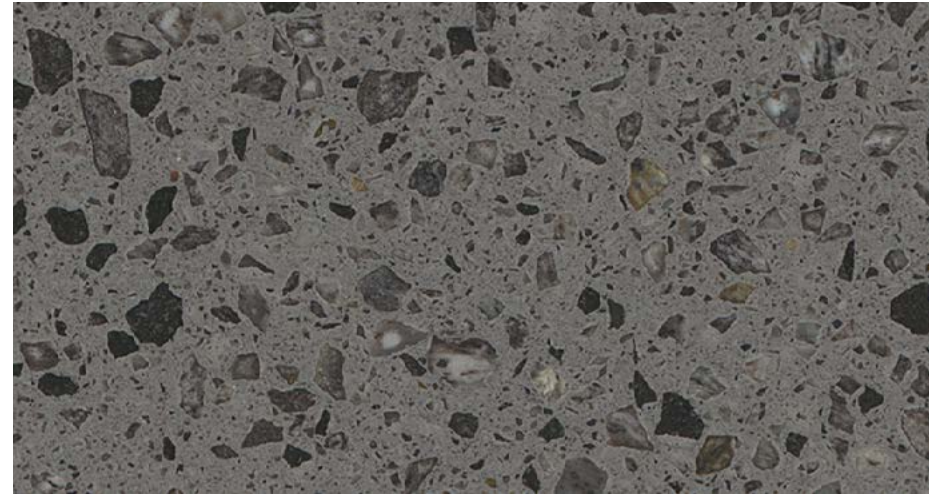
Finish Polished  
Size Jumbo 155  
Thickness 20 mm



Reference  
photo



Website  
detail



### Taurus Terazzo Grey

Finish Polished, matt  
Size Jumbo 155  
Thickness 20 mm



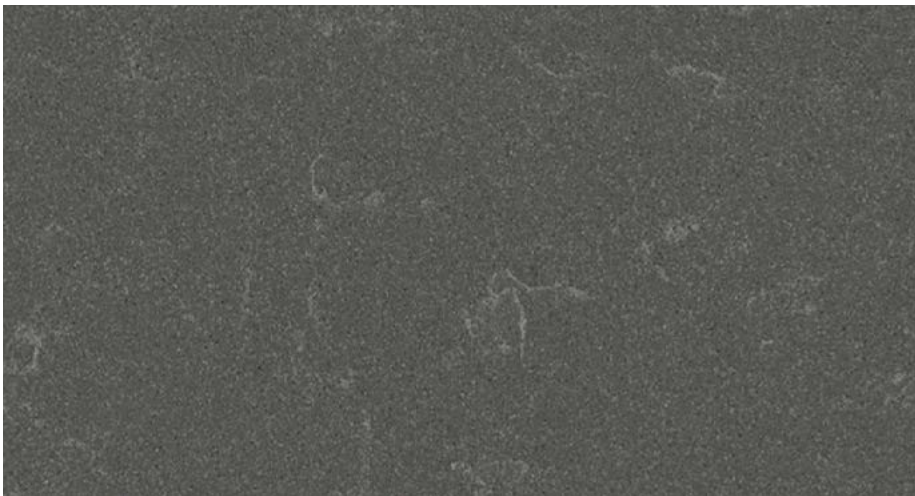
Video



Reference  
photo



Website  
detail



### Noble Pro Storm

Finish Polished  
Size Jumbo 155  
Thickness 12 mm, 20 mm, 30 mm



Video



Reference  
photo



Website  
detail



### Crystal Anthracite Pure

Finish Polished  
Size Jumbo 155  
Thickness 20 mm, 30 mm



Reference  
photo

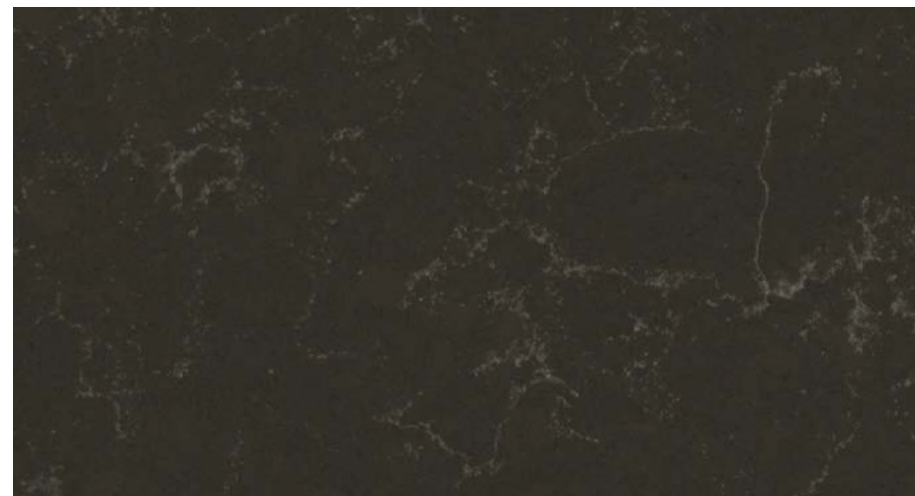


Website  
detail





■ Noble Athos Brown



### Noble Pietra Grey

Finish Polished  
Size Jumbo 155  
Thickness 20 mm, 30 mm



Reference  
photo



Website  
detail



### Noble Athos Brown

Finish Polished  
Size Jumbo 155  
Thickness 20 mm, 30 mm



Reference  
photo



Website  
detail



### Noble Imperial Grey

Finish Polished  
Size Jumbo 155  
Thickness 20 mm



Reference  
photo



Website  
detail



### Crystal Belgium

Finish Polished, matt  
Size Jumbo 155  
Thickness 20 mm



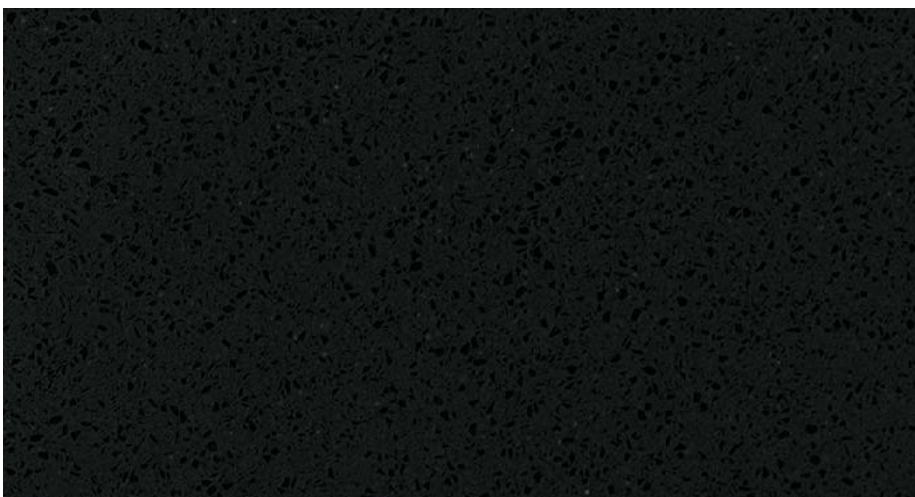
Video



Reference  
photo



Website  
detail



### Gobi Black

Finish Polished  
Size Jumbo 155  
Thickness 20 mm, 30 mm  
Recycled materials 40%



Reference  
photo



Website  
detail



### Taurus Black

Finish Polished  
Size Jumbo 155  
Thickness 12 mm, 20 mm  
Recycled materials 50%



Reference  
photo



Website  
detail





### Taurus Terazzo Dark

Finish Polished, matt  
Size Jumbo 155  
Thickness 12 mm, 20 mm  
Recycled materials 60%



Video



Reference  
photo



Website  
detail



### Starlight Black

Finish Polished  
Size Jumbo 155  
Thickness 12 mm, 20 mm, 30 mm  
Recycled materials 70%  
Tiles



Reference  
photo



Website  
detail



### Brilliant Black

Finish Polished  
Size Jumbo 155  
Thickness 20 mm, 30 mm  
Recycled materials 40%



Reference  
photo



Website  
detail



### Crystal Vulcano

Finish Polished  
Size Jumbo 155  
Thickness 20 mm, 30 mm



Video



Reference  
photo



Website  
detail





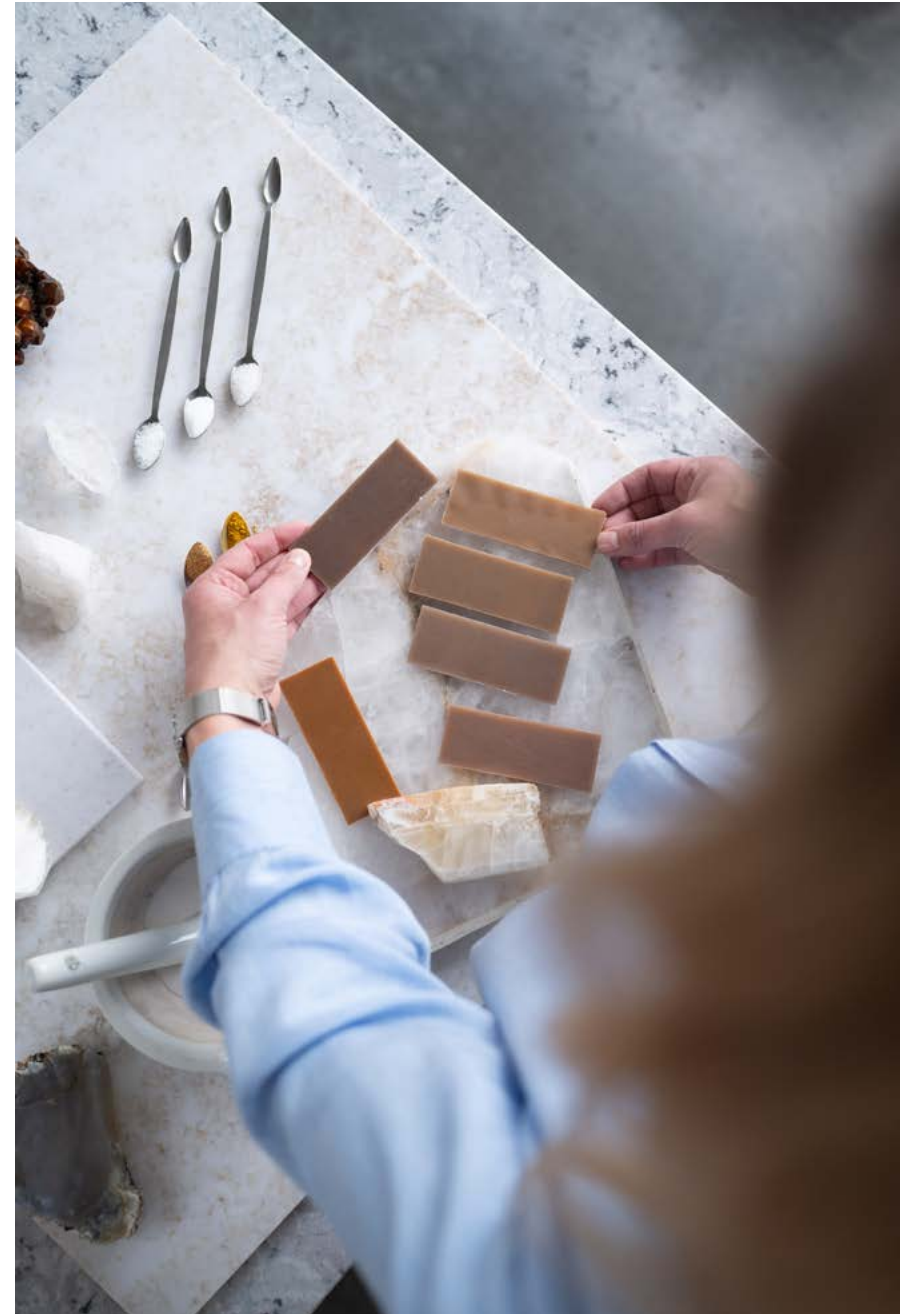
■ Noble Ivory White  
*Pavlis Studio, BekArch, Tino Kuskunis*

**TechniStone®**  
A WILSONART COMPANY

# R&D

Today, engineered stone is registering one of the most dynamic growth patterns of any material used in building interiors worldwide. This is due to its high utility and its many different decors, which reflect the latest design trends. Research and product development is mainly provided by our own capacities and the implementation of research activities is one of the most important long-term goals of Technistone.

Technistone produces approximately 80,000 m<sup>2</sup> of engineered stone every month, an area equivalent to eleven football pitches.



# Production

## Preparation of Raw Material Inputs

Raw materials used to produce TechniStone® are carefully inspected, graded and cleaned.

The resin is stored in tanks, the aggregate and silica sand are sieved and stored in silos, and the grit from natural mineral materials is kept in big bags.

Glass, mirrors and granite are crushed in machines, while vibrating screens and separators ensure that no unwanted material enters the production line.

## Mixing and spreading

The raw materials go into mixing machines and are combined with blended resin.

The entire process is computer-controlled.

The prepared mixture is then poured into a rubber mold to create the TechniStone® slabs.

## Pressing and kiln

The mixture is then pressed into a compact sheet using a vibrating press and a vacuum.

The slab, still in a soft state, is pushed into the kiln, where it is cured for the necessary time at a temperature of around 100°C.

## Finishing

The slab is measured, calibrated to the required thickness, and then given its final finish.

The finished slab can be cut to almost any required size.



**TechniStone®**  
A WILSONART COMPANY



# Certification

A list of all products with corresponding certificates can be inspected in the [Origin](#) database. A product portfolio showing material characteristics and product certificates is also available in the [NBS Source](#) database.

The Health Product Declaration Collaborative Protocol examines the chemical substances in a product and compares them with lists of hazardous substances published by government and scientific institutions. TechniStone® does not contain any unauthorized chemicals.

Technistone's products have achieved UL's Greenguard Gold and SCS Global Services' Indoor Advantage certifications. That means they are free of any volatile organic compounds (VOCs) and do not emit any substances that can negatively influence the quality of the air indoors.

Many of Technistone's products contain more than a 20, 30, 40, and in some cases as much as a 70 percent share of recycled content.

TechniStone® complies with strict standards and procedures imposed by the National Sanitation Foundation and its products are safe for contact with food.



**More information**  
**about the specific product,**  
**certifications may differ.**

**TechniStone®**  
A WILSONART COMPANY

# Standards



Well-trained personnel inspect and evaluate the quality of all slabs.

An objective color measurement system is used to determine the exact color shade of each slab.

Pilot samples are developed in the lab, aesthetic, physical and mechanical properties of products are improved, raw materials are checked and control tests are performed.

## **Product Testing According to European Standards**

EN 14617-1 (Density, Water absorption)

EN 14617-2 (Flexural strength)

EN 14617-4 (Abrasion)

EN 14617-5 (Freeze thaw resistance)

EN 14617-6 (Thermal Shock resistance)

EN 14617-09 (Impact resistance)

EN 14617-10 (Resistance to Chemicals)

EN 14617-11 (Thermal expansion coefficient)

EN 13501-1 (Flammability)

ČSN 725191 P CEN/TS 16165 (Slipperiness)

## **American Testing Standards (ASTM)**

ASTM C97 (Absorption, Bulk Specific Gravity)

ASTM C99 (Modulus of Rupture)

ASTM C880 (Flexural strength (bending))

ASTM C1028 (Static Coefficient of Friction)

ASTM C650 (Resistance to Chemical Substances)

ASTM C1378 (Resistance to Staining)

ASTM C484 (Thermal Shock Resistance)

ASTM C648 (Breaking Strength)

ASTM C241 (Abrasion Resistance)

ASTM E84 (Flammability)

ASTM E228 (Thermal expansion coefficient)



# Warranty

## Validity

Technistone offers a **ten-year** warranty on material used in an interior. This warranty does not cover material used in commercial premises, for which there is a five-year warranty.

**The five-year** warranty covers slabs installed in areas accessible to the public, beginning with the date of installation.

The Technistone company offers a **two-year** warranty on floor tiles.

The warranty must be activated by registering your TechniStone® product on the company's website under the section "Warranty".

The warranty starts the day that the fabricated slabs are installed by a licensed fabricator in the interior living space. Registration must be completed within 30 days of said installation.

The seller is obligated to provide and abide by the warranty information presented to the customer throughout the warranty period, in accordance with these warranty terms.

To process the claim and ensure quick quality service, contact the location where the original TechniStone® slab was purchased.

Provide quality photo documentation of the defects claimed.

During warranty service, the product must be available to the designated Technistone representative to perform a visual inspection and the customer must follow the representative's given instructions.

In the event that a slab replacement is decided, the processing, reinstallation, and associated costs will not be covered by the warranty issued by TechniStone®.

Technistone reserves the right, in agreement with the customer, to replace the defective slab with a new design in the current product offer, which is regularly updated due to development and market requirements.



10-year  
warranty



[More about  
Warranty](#)

**TechniStone®**  
A WILSONART COMPANY



# Maintenance and Cleaning

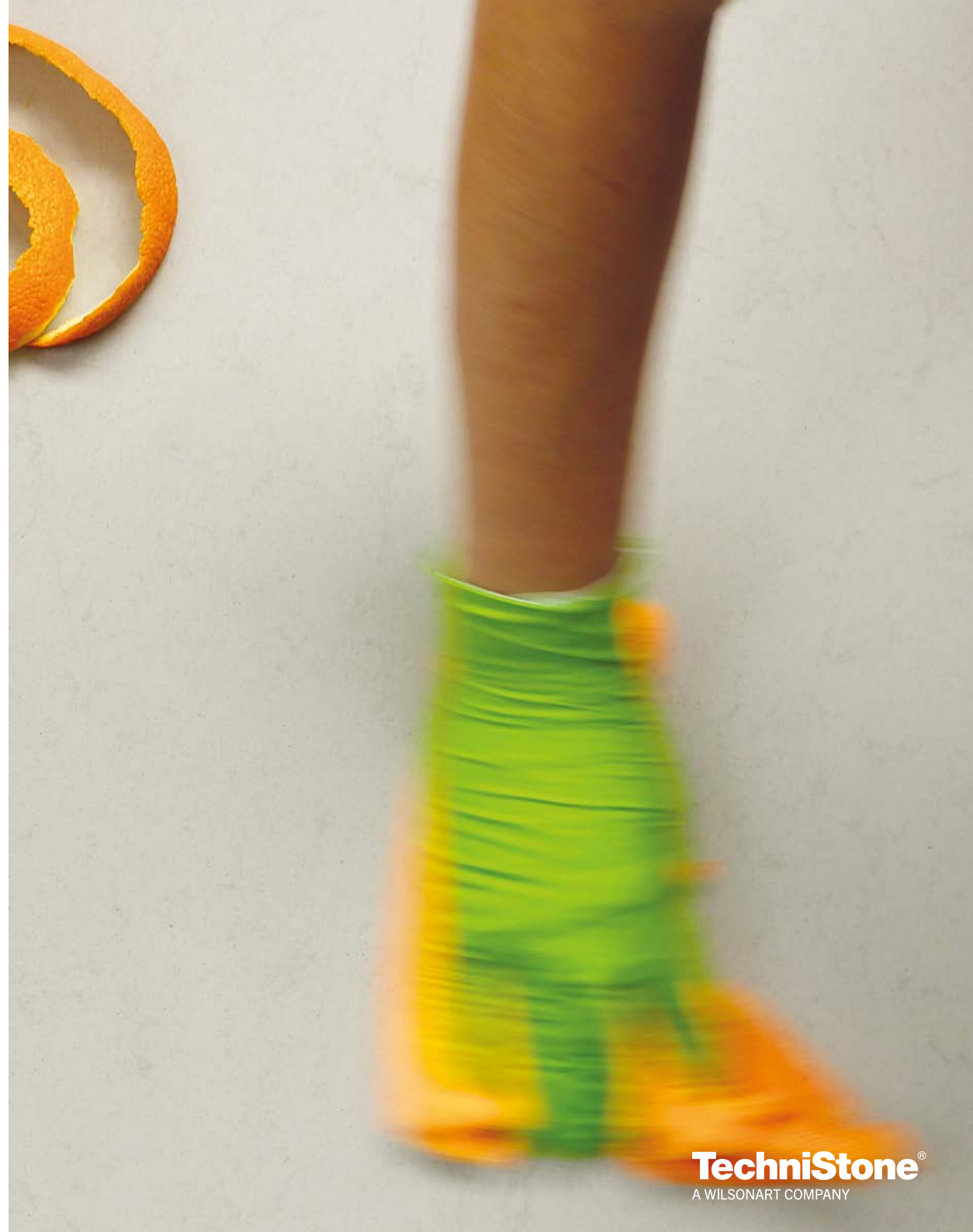
For proper maintenance it is very important to clean the material only with water or neutral detergents.

We recommend using a microfiber cloth to achieve a high surface gloss.

Cutting directly on the worktop is not recommended.

Prolonged exposure to aggressive cleaners may damage the surface of the product!

Insulating pads must be used under hot objects.



# Sustainability

Living in harmony with nature and not taking its beauty for granted. At Technistone, we do our best to preserve nature's resources while being as considerate as possible in our operations.

## **3R** We support sustainable development through the three magic Rs, **REDUCE - RECYCLE - REUSE**

By applying these mottos both in production and in our daily lives, we strive to help reduce material waste and preserve natural resources.

### **1 REDUCE**

We **reduce** waste, use resources prudently and reduce the side effects of resource extraction.

### **2 RECYCLE**

We **recycle** unused waste material.

### **3 REUSE**

TechniStone® product can be **reused** in different forms and variations, thus contributing to long-term sustainability. Thanks to the extraordinary properties given by the combination of nature and modern 21<sup>st</sup> century technology, the material can retain its beauty for many years.



[Discover more](#)



**REDUCE  
RECYCLE  
REUSE**

**TechniStone®**  
A WILSONART COMPANY

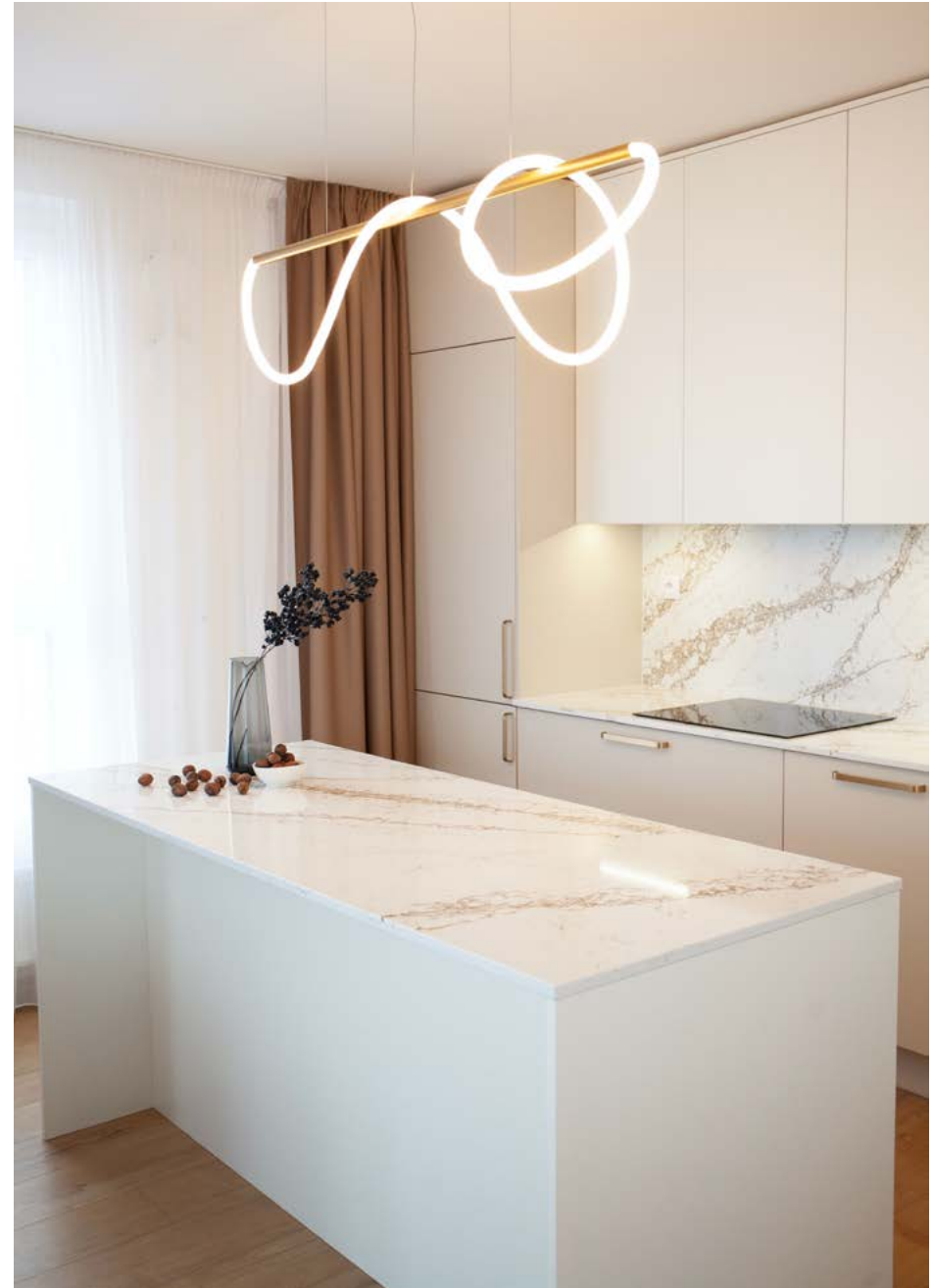


# Environment and Sustainability Report

**TechniStone**  
ADVANCED SURFACE TECHNOLOGY



# References







# One-Stop Information Hub for Professionals



Architects & Designers



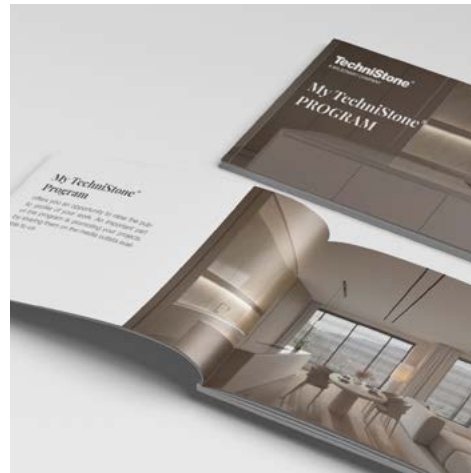
Online brochures



Magazine TechniZONE



PBR data



My TechniStone® program



Projects



# Website



The image shows a laptop displaying the TechniStone website. Three circular callouts highlight specific features:

- Top Left Callout:** A grid of stone samples with filters for 'VIEW', 'PRICE', 'COLLECTION', and 'SLAB SIZE'. The samples include Glencoe, Altamonte, Verde Peak, Bronze Coast, Milano Rico, Harmonie Navajo, Crystal Vulcano, Imagine Grey, Venezia Pastino, and Calceatta Olympus.
- Top Right Callout:** A navigation menu with links for 'Color range', 'Material', 'Inspiration', 'Where to buy', and 'Resources'. Below the menu, there are links for 'Product manual' and 'For download'.
- Bottom Callout:** A section titled 'Advantages of TechniStone®' listing benefits such as 'Easy Maintenance & Cleaning', 'Suitable for Food Contact', 'Quartz & Natural/Like Materials', 'Long Lifetime & Durability', 'Highly Scratch Resistant', 'Highly Stain & Natural Acid Resistant', 'Highly Bacteria Resistant', and 'Waterproof'. Below this is a section titled 'Uses for engineered stone'.

The main website content includes a header with 'TechniStone® A WILSONART COMPANY', a navigation bar with 'PROFESSIONALS', 'BLOG', 'NEWS', and 'ENGLISH', and a main banner with the text 'Timeless design in a warm neutral shade' and 'Glencoe'. Below the banner is a section titled 'WE ARE A PREMIUM QUALITY QUARTZ PRODUCER' and a 'New Designs' section.

# Where to Buy



Find your vendor



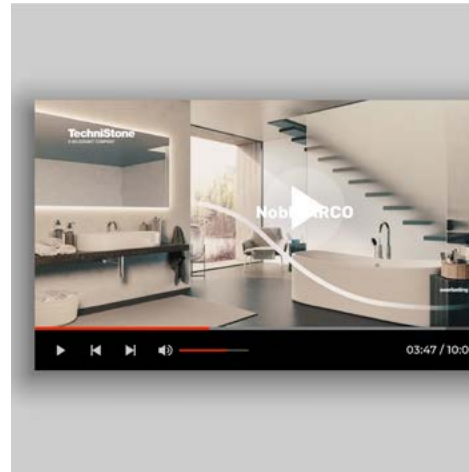


# Inspiration

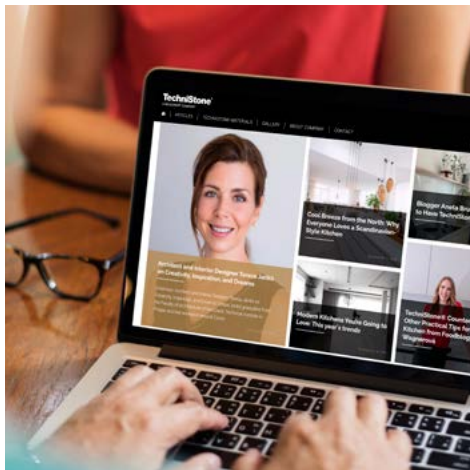


## Augmented reality

The reality of your home with new TechniStone® designs and patterns with the Technistone AR



## Videogallery



## Technistone blog



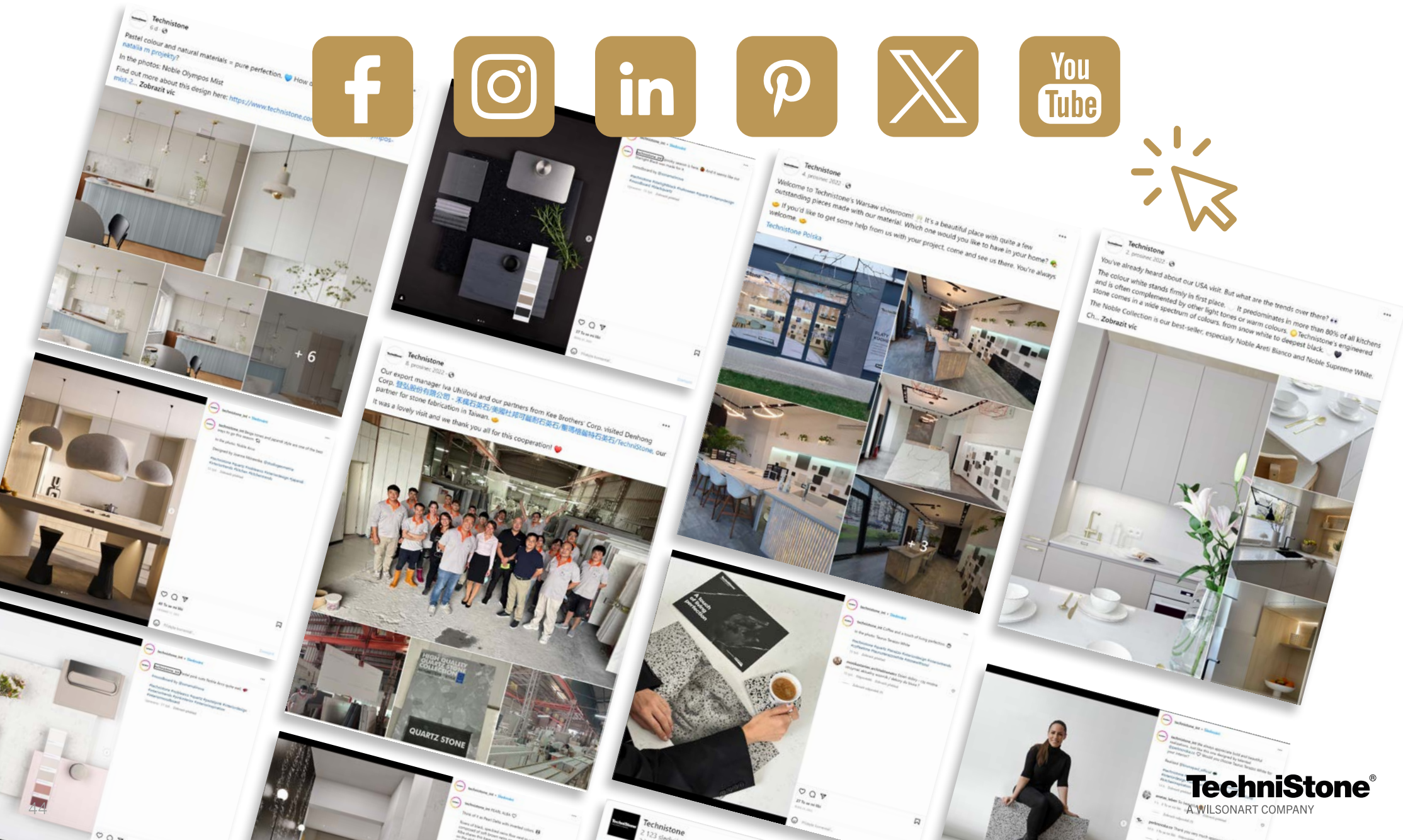
## Ambassadors



**TechniStone®**  
A WILSONART COMPANY



# Social Media







*Stone with soul*



[Stone With Soul - trailer](#)

**TechniStone®**  
A WILSONART COMPANY



# Stone with Soul

Engineered stone lives life with us – its owners

It takes many forms – in architecture, modern design, timeless home furnishings

It comes alive through our perceptions. It reflects the individuality – the character, taste, and values – of its owner

It remembers stories – some of which last for only a moment, others that remain inscribed in our minds forever

Where there is life, there is soul, revealed in the story of Stone With Soul

A touch of living perfection – TechniStone® welcomes visitors to its website and on social media. It speaks to the world with its brochures, billboards, manuals, blog articles, and more.





# Customer Service

For more information on cleaning and maintenance, and for other technical requirements, please contact us via email: [customerservice@technistone.com](mailto:customerservice@technistone.com), Messenger (Live Chat) or the WhatsApp app.

You can use the online forms provided to register your warranty or make a claim.

The list of frequently asked questions and information about warranties and recommended maintenance will help answer general questions. If you haven't found the answer you were looking for, don't hesitate to contact us!



Customer service



WhatsApp +420 731 543 211



**TechniStone®**  
A WILSONART COMPANY

# TechniStone®

A WILSONART COMPANY

Technistone, s.r.o.

Bratri Stefanu 1070

Hradec Kralove 500 03

Czech Republic

Phone: +420 495 714 711

E-mail: [sales@technistone.com](mailto:sales@technistone.com)

[technistone.com](https://technistone.com)

